

J 80 Ultra – J 100 Ultra

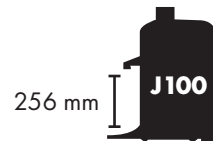
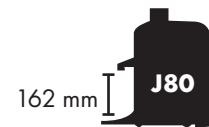
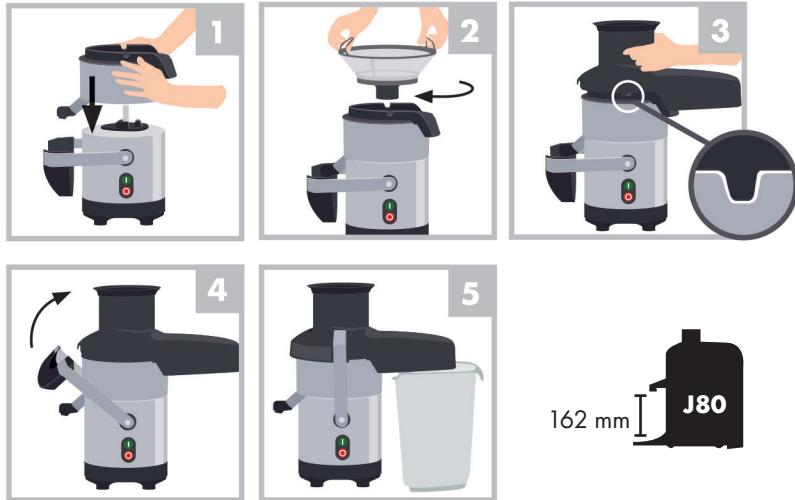
Consignes de sécurité et d'utilisation / Safety and Operating Instructions
 Veiligheidsvoorschriften en gebruiksaanwijzing / Sicherheits- und Bedienungshinweise

À fixer au mur.
 Attach to the wall.
 Aan de wand te bevestigen.
 An der Wand zu befestigen.

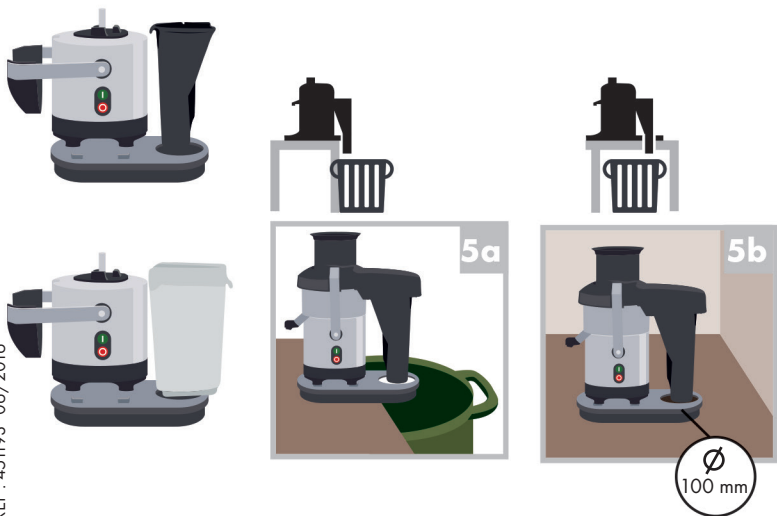


robot coupe®
 www.robot-coupe.com

Montage / Assembly / Montage / Montage



J100 Ultra



Utilisation / Usage / Gebruik / Bedienung

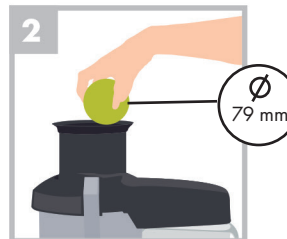


Éplucher les fruits à peau épaisse
 / Peel fruit with thick skins /
 Schil vruchten met een dikke schil
 / Dickschalige Früchte schälen

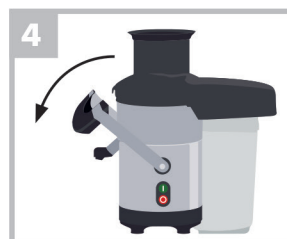


Dénoyauter les fruits à noyau /
 Remove the fruit pip / Ont-
 pit steenvruchten / Kern- und
 Steinobst entkernen

1 marche / start /
 aan / ein



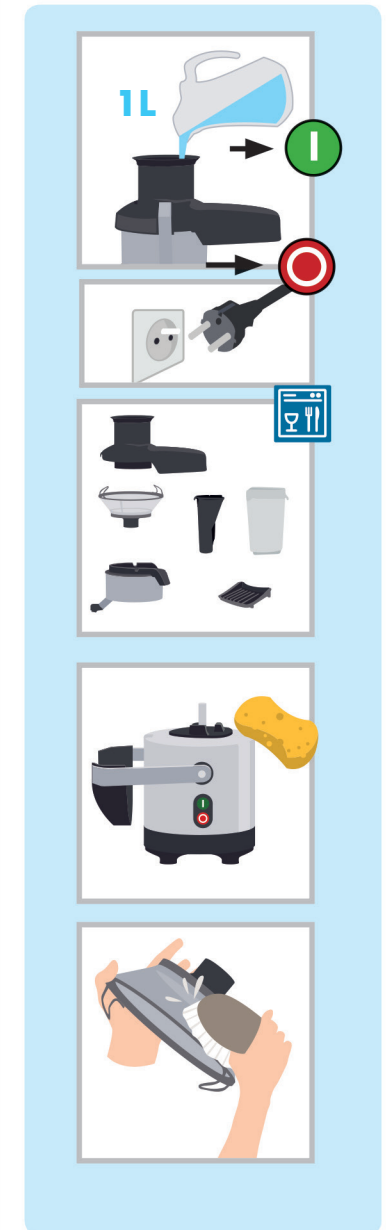
3 arret / stop /
 uit / aus



Sécurité / Safety / Veiligheid / Sicherheit



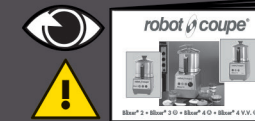
Nettoyage / Cleaning / Reiniging / Reinigung



J 80 Ultra – J 100 Ultra

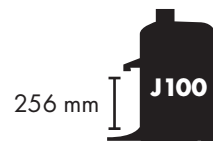
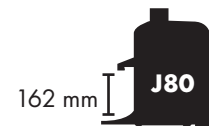
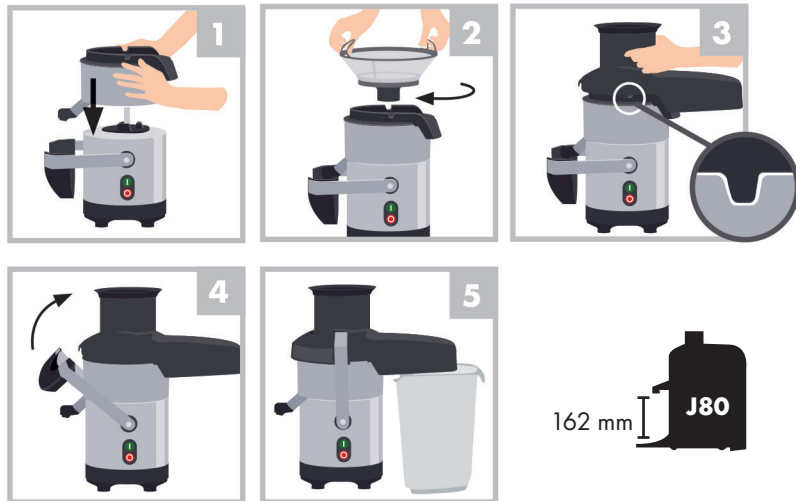
Consignas de seguridad y utilización / Instruções de segurança e de utilização
Istruzioni di sicurezza e d' utilizzo / Техника безопасности и руководство по эксплуатации

Para fijar en la pared.
Para afixar na parede.
Da fissare a parete.
Повесить на стену.



robot coupe®
www.robot-coupe.com

Montaje / Montagem / Montaggio / Сборка



J100 Ultra



Utilización / Utilização / Utilizzo / Использование

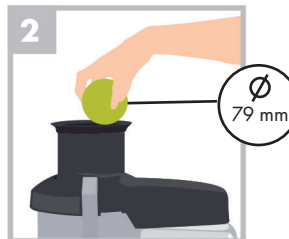


Pelar las frutas de piel gruesa / Descascar os frutos com pele grossa / Sbucciare la frutta con buccia grossa / Фрукты с толстой кожей очистить от кожуры

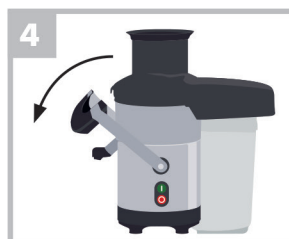


Deshuesar las frutas con hueso / Descarocar os frutos com caroço / Togliere il nocciolo / Фрукты с косточками очистить от косточек

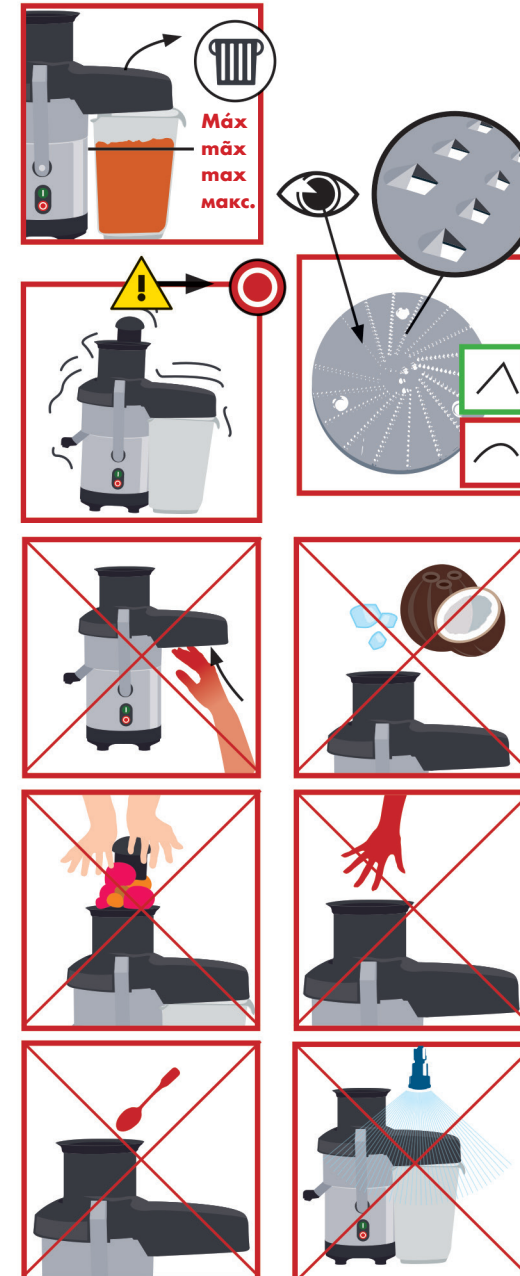
1 Marcha / ligar / avviamento / пуск



3 Parada / desligar / arresto / стоп



Seguridad / Segurança / Sicurezza / Безопасность



Limpeza / Limpeza / Pulizia / Чистка

