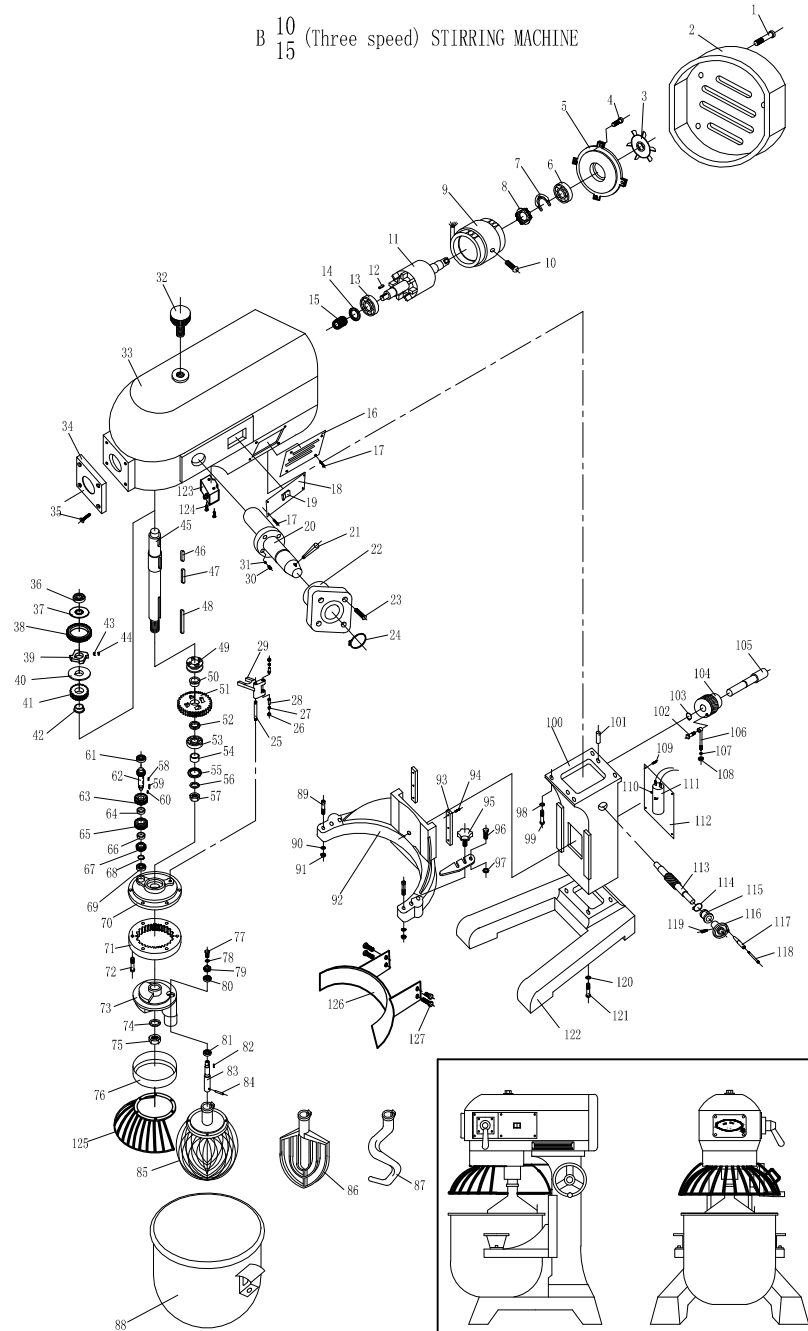


B 10
15 (Three speed) STIRRING MACHINE



	Name	Drawing number	Amount
1	Screw M5X25	GB70	4
2	Rear Cover	B10/15-0087	1
3	Motor Fan		1
4	Screw M6X30	GB818	4
5	Bake Cover	B10/15-0086	1
6	Bearing 6203	GB276	1
7	Bottom Plate		1
8	Centrifugal Switch		1
9	Stator		1
10	Screw M6X30	GB818	1
11	Rotor		1
12	Dowel 3X25	GB1096	1
13	Bearing 6203	GB276	1
14	Oil Seal 17X35X10	HG4-692	1
15	Main Transmission Worm	B10/15-0100	1
16	Window shades	B10/15-0021	2
17	Screw M4X6	GB/T818	8
18	Label		1
19	Switch		1
20	Eccentric shaft	B10/15-0105	1
21	Shiftfork Handle	B10/15-0106	1
22	Locating Cover Plate	B10/15-0107	1
23	Screw M6X14	GB/T819	4
24	Snap Spring d18	GB894	1
25	Fork Shaft	B10/15-0058	1
26	Regulating Nut	B10/15-0111	2
27	Spring	B10/15-0112	2
28	Fork contact	B10/15-0113	2
29	Shift Fork	B10/15-0056	1
30	Positioning Spring	B10/15-0109	2
31	Steel Ball φ6	GB308	2
32	Oil plug screw	B10/15-0022	1
33	Case	B10/15-0039	1
34	Viewport Cover	B10/15-0024	1
35	Screw M5X15	GB/T818	4
36	Bearing 6203	GB/T276	1
37	Cover Plate	B10/15C-07	1
38	Clutch Gear	B10/15C-04	1
39	Cam	B10/15C-05	1
40	Cover Plate	B10/15C-07	1
41	Gear (A) Z=21	B10/15-0053	1
42	Output shaft sleeve (B)	B10/15-0054	1
43	Leaf Spring		1
44	Cylindrical roller 8X16		1
45	Output shaft	B10/15C-06	1
46	Dowel 6X20	GB1096	1
47	Dowel 6X25	GB1096	1
48	Dowel 6X45	GB1096	1
49	Conjugant	B10/15-0057	1
50	Output shaft sleeve (B)	B10/15-0054	1
51	Gear (B) Z=29	B10/15-0059	1

	Name	Drawing number	Amount
52	Output shaft sleeve	B10/15-0052	1
53	Bearing 6204	GB/T276	1
54	Output shaft sleeve (C)	B10/15-0062	1
55	Oil Seal 25X42X10	HG4-692	1
56	Washer 12	GB/T97	1
57	Nut M12	GB56	1
58	Dowel 6X14	GB1096	1
59	Dowel 6X15	GB1096	1
60	Dowel 6X14	GB1096	1
61	Bearing 6001	GB/T276	1
62	Inputshaft Z=13	B10/15C-03	1
63	Gear (B) Z=26	B10/15C-01	1
64	Spacer Sleeve	B10/15C-02	1
65	Worm Z=24	B10/15-0044	1
66	Input shaft sleeve	B10/15-0043	1
67	Gear (A) Z=18	B10/15-0042	1
68	Snap Spring 17	GB894	1
69	Bearing 6001	GB/T276	1
70	Under cover	B10/15-0037	1
71	Ring Gear Z=57	B10/15-0036	1
72	Screw M6X25	GB70	6
73	Planetary Gear Holder	B10/15-0033	1
74	Washer 12	GB/T97	1
75	Nut M12	GB/T6170	1
76	Ring	B10/15-0034	1
77	Screw M6X20	GB/T70	1
78	Washer 6	GB/T95	1
79	Planetary Gear Z=17	B10/15-0066	1
80	Bearing 6203	GB/T276	1
81	Bearing 6004	GB/T276	1
82	Dowel 5X20	GB96170	1
83	Stirring shaft	B10/15-0069	1
84	Straight Pin 8X25	GB/T117	1
85	Stirring ball	B10/15-0026-01	1
86	Agitator	B10/15-0026-03	1
87	Dough mixer	B10/15-0026-02	1
88	Charging barrel	B10/15-0027	1
89	Anchor Pin	B10/15-0028	2
90	Spring Washer 8	GB/T-93	2
91	Nut M8	GB96170	2
92	Barrel Holder	B10/15-0009	1
93	Flat Clamp	B10/15-0076	2
94	Screw M6X16	GB5780	6
95	Locking Pin	B20F-0039	2
96	Screw M6X20	GB5780	2
97	Washer 6	GB/T97	2
98	Ring Washer 8	GB/T-93	4
99	Screw M8X35	GB70	4
100	Guide pillar	B10/15-0008	1
101	Straight Pin 8X16	GB/T119	2
102	Screw hook	B10/15-0012	1

	Name	Drawing number	Amount
103	Snap Spring d14	GB894	1
104	Lifting gear	B10/15-0013	1
105	Lifting worm shaft	B10/15-0015	1
106	Lifeing Hook	B10/15-0010	1
107	Washer 10	GB98	1
108	Nut M10	GB96170	1
109	Screw M4X8	GB/T818	4
110	Screw M6X15		1
111	Capacitor 100UF		1
112	Plate	B20F-0062	1
113	Lifting worm	B10/15-0011	1
114	Snap Spring d25	GB894	1
115	Sleeve	B10/15-0089	1
116	Handwheel	B10/15-0092	1
117	Handwheel handle	B10/15-0093	1
118	Core shaft	B10/15-0094	1
119	Screw M6X16	GB/T818	1
120	Ring Washer 8	GB/T-93	4
121	Screw M8X45		4
122	Footing	B10/15-0001	1
123	Micro switch		1
124	Screw M4X25		2
125	Protective guard	B10/15-0034-2	1
126	Fixed crash barrier	B10/15-0034-3	1
127	Screw M4X25	GB/T70	4