



МОДУЛЬНЫЕ СТЕЛЛАЖНЫЕ СИСТЕМЫ
MODULAR SHELVING SYSTEMS
SCAFFALATURE MODULARI

2020/2021

МОДУЛЬНЫЕ СТЕЛЛАЖНЫЕ СИСТЕМЫ LOAD.ME

Modular Shelving Systems LOAD.ME

Scaffalature modulari LOAD.ME

Высокопрочная и функциональная модульная система стеллажей предлагает идеальные решения в области управления пространством помещений. Она обеспечивает максимально эффективное использование имеющихся площадей за счет различной комбинации стандартных модульных секций. Как система хранения, стеллажная система предназначена для холодильных и морозильных камер, кухонь, лабораторий различного назначения и других мест общего хранения. Прочная конструкция из анодированного алюминия и армированного пластика обеспечивает высокую нагрузочную способность стеллажей.

Модульная система стеллажей представлена двумя линейками:

LOAD.ME POLY – с полками из армированного полипропилена

LOAD.ME INOX – с полками из нержавеющей стали

High quality and functional modular shelving systems are ideal for managing spaces. It provides highly effective use of space due to various combinations of standard modular sections. As a storage system, modular shelving system is intended for refrigerating cameras and freezers, kitchens, various laboratories and other storage places. Its strong construction from anodized aluminum and reinforced plastic provide high load capacity of shelving.

Modular shelving is presented by two product lines:

LOAD.ME POLY – with shelves from reinforced polypropylene

LOAD.ME INOX – with shelves from stainless steel

Le scaffalature modulari solide e funzionali offrono la soluzione ideale per chi deve gestire lo spazio di stoccaggio. Garantiscono l'uso più efficiente delle superficie disponibili grazie alle varie combinazioni di sezioni modulari standard. Le scaffalature modulari sono progettate per organizzare gli spazi di stoccaggio delle celle frigorifere, tutto il settore alimentare, laboratori di diversi tipo e magazzini in genere. La robusta costruzione in alluminio anodizzato e plastica rinforzata garantisce un'elevata capacità di carico della scaffalatura.

Scaffalature modulari si presentano in due versioni:

LOAD.ME POLY – con ripiani in polipropilene rinforzato

LOAD.ME INOX – con ripiani in acciaio inox



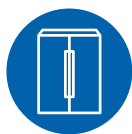
МОДУЛЬНЫЕ СТЕЛЛАЖНЫЕ СИСТЕМЫ

Modular shelving systems / Scaffalature modulari



ПРЕДНАЗНАЧЕНЫ ДЛЯ

Are intended for: / Destinate per:



холодильных
и морозильных камер
refrigerating cameras
and freezers
celle frigorifere



лабораторий
различного назначения
various laboratories
diverse tipologie
di laboratori



медицинских
и фармацевтических предприятий
medical and pharmaceutical
enterprises
settore farmaceutico e sanitario



магазинов
shops
negozi



прачечных и других мест
общественного хранения
laundries and other places
of public storage
lavanderie e magazzini
in genere



предприятий общепита
catering enterprises
settore ristorazione pubblica

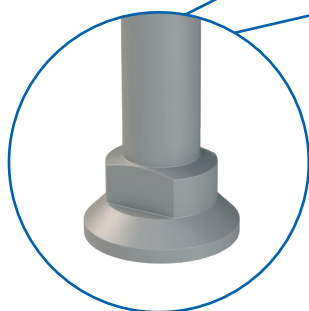
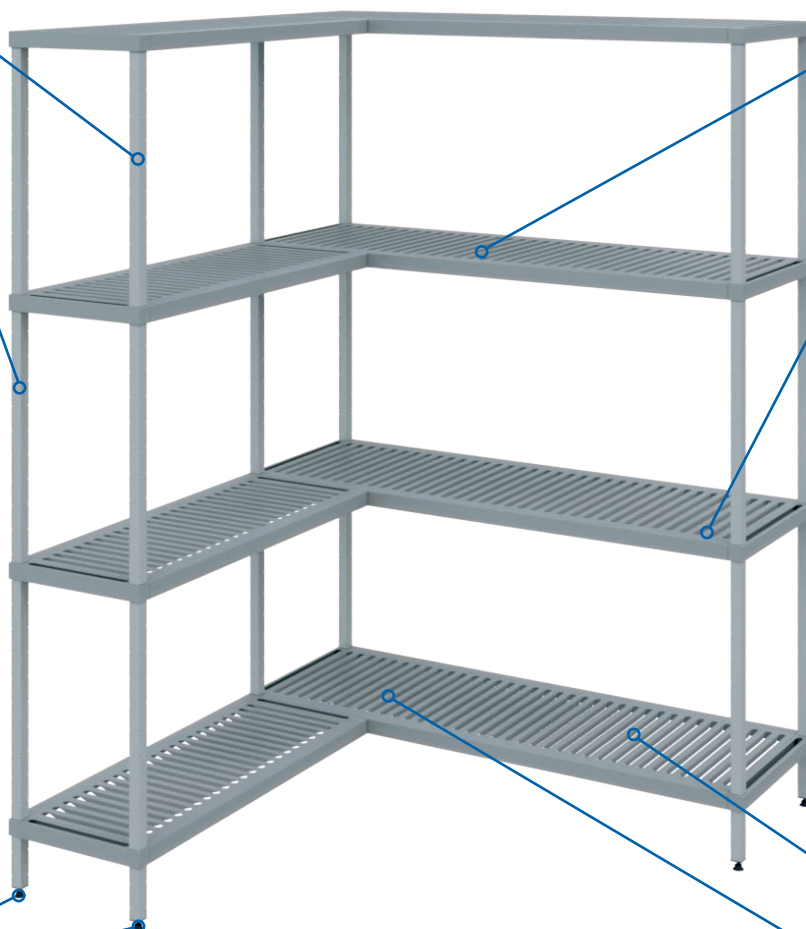
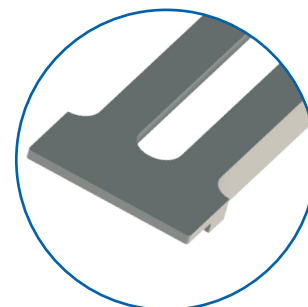
ПРИМЕНЯЕМЫЕ МАТЕРИАЛЫ

Used materials / Materiali utilizzati



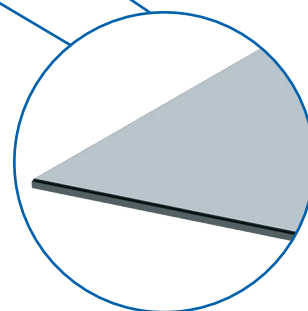
Рама из экструдированного анодированного алюминиевого профиля
Frame form extruded anodized aluminum profile
Profilo strutturale in alluminio anodizzato estruso

Высокопрочные перфорированные полипропиленовые полки
Strong perforated polypropylene shelves
Robusti ripiani forati



Ножки и вставки из прочного композитного сплава
Legs and inserts from composite alloy
Piedini ed inserti in dura lega composita

Возможность изготовления полок из нержавеющей стали
Possibility to produce stainless steel shelves
Ripiani in acciaio inox disponibili su richiesta



Применяемые материалы обеспечивают идеальную коррозионную стойкость и отвечают всем требованиям гигиены.

Used materials provide ideal corrosion resistance and meet hygiene requirements.

I materiali utilizzati assicurano l'ottima resistenza alla corrosione e corrispondono alla normativa igienico-sanitaria vigente

ФУНКЦИОНАЛЬНЫЕ ПРЕИМУЩЕСТВА

Functional advantages / Vantaggi funzionali



Прочность конструкции

Strong construction

Solidità della struttura



Высокая нагрузочная способность

High load capacity

Elevata portata di carico



Регулируемая высота ярусов полок

Shelf regulation dial 150 mm

Regulated height of tiered shelves

Adjustment step is 150 mm

Altezza regolabile dei ripiani

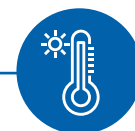
Con passo di regolazione di 150 mm



Сменные полки – вставки идеальны для мытья в посудомоечной машине

Removable shelves are ideal for wash in wash machine

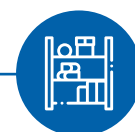
Ripiani rimovibili lavabili anche in lavastoviglie



Отличная коррозионная стойкость при температуре эксплуатации от -30°C до +80°C

High corrosion resistance at operating temperature from -30C to +80°C

Resistenza alla corrosione alla temperatura dell'esercizio da -30°C a +80°C



Скрытые крепления для обеспечения эстетики и гигиены

Hidden mounts for esthetics and hygiene

Fissaggi a scomparsa per assicurare l'estetica e l'igiene



Регулируемые ножки

Regulated legs

Piedini regolabili



Использование колесных опор для свободного перемещения стеллажа

Usage of wheel support for free movement of shelving

Disponibilità di ruote per facile spostamento

ОСНОВНЫЕ МОДУЛИ

Main modules / Elementi modulari principali

Стеллажи представляют собой универсальную модульную систему, которая предоставляет неограниченные возможности застройки помещения. Различные комбинации модулей стеллажей от одной секции до сложных конструктивных компоновок форм «L», «U», «Т» позволяют расположить стеллажи в помещении оптимально и эффективно, учитывая все требования заказчика.

Modular shelving is a multipurpose modular system providing unlimited possibilities for premises organizing. Various combinations of shelving modules from one section to complex constructive arrangements of L, U and T forms enable effective location of shelving taking into consideration all requirements of the customer.

Le scaffalature sono un sistema modulare universale che offre illimitate possibilità di organizzazione dello spazio di stoccaggio. Varie combinazioni di scaffali da una singola campata alle complesse forme costruttive a forma di «L», «U», «T» permettono di posizionarli in modo ottimale, efficiente ed adattabile per ogni locale

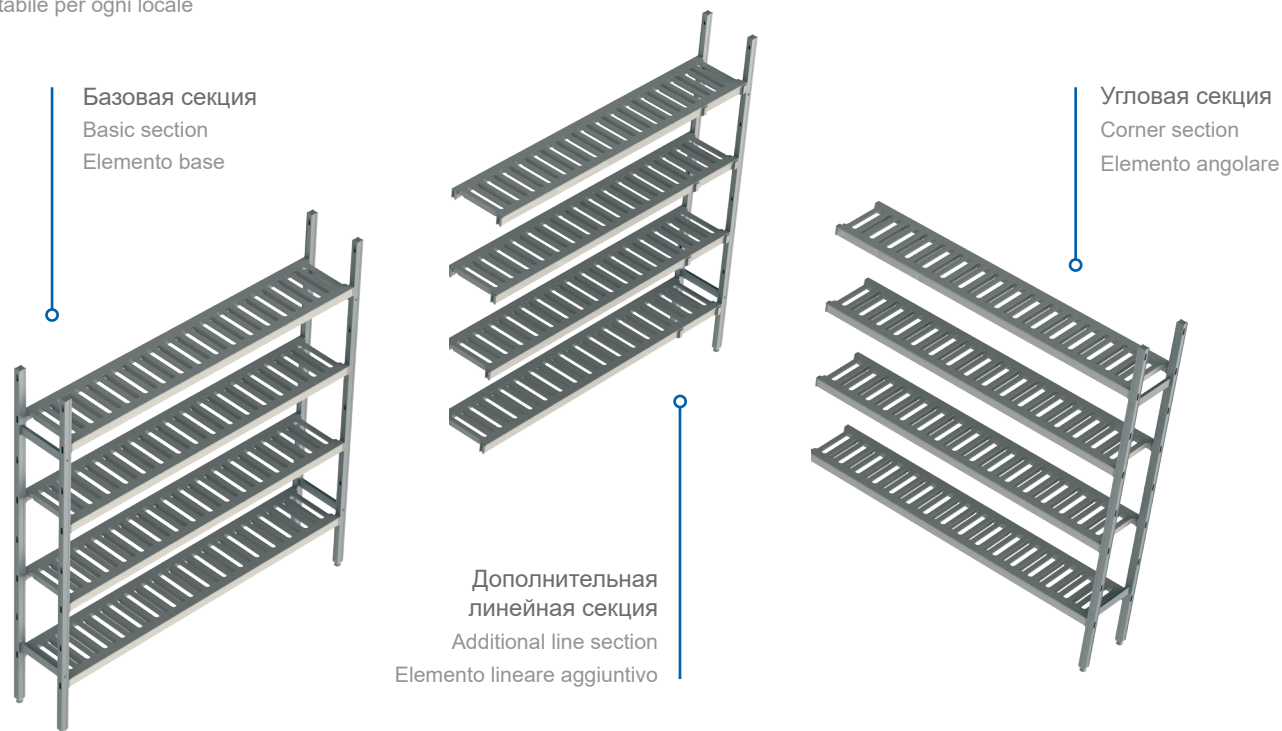


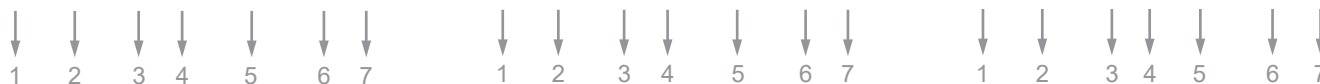
СХЕМА УСЛОВНЫХ ОБОЗНАЧЕНИЙ

Designation of the rack section / Legenda codifiche scaffalatura

18AL.3PP40.15B

16AL.5PP30.10E

21AL.4IN50.12C



- | | |
|--|--|
| <p>1 высота секции, где 16 - 1600 мм, 18 - 1800 мм, 21 - 2100 мм section height, where 16 - 1600 mm, 18 - 1800 mm, 21 - 2100 mm altezza dello scaffale, dove 16 - 1600 mm, 18 - 1800 mm, 21 - 2100 mm</p> <p>2 материал стеллажной рамы, где AL – алюминий rack frame material, where AL – aluminum materiale della struttura portante, dove AL – alluminio</p> <p>3 количество ярусов полок number of shelves tiers numero di livelli</p> <p>4 материал полок, где PP – полипропилен, IN – нержавеющая сталь shelf material, where PP – polypropylene, IN – stainless steel materiale de l'ripiano, dove PP – polipropilene, IN – acciaio inossidabile</p> <p>5 глубина стеллажа, где 30 – 300 мм, 40 – 400 мм, 50 – 500 мм rack depth, where 30 – 300 mm, 40 – 400 mm, 50 – 500 mm profondità dello scaffale, dove 30 – 300 mm, 40 – 400 mm, 50 – 500 mm</p> | <p>6 длина секции, где 06...18 – от 600 до 1800 мм section length, where 06...18 – from 600 till 1800 mm lunghezza dello scaffale, dove 06...18 – da 600 a 1800 mm</p> <p>7 вид стеллажной секции, где B – базовая секция E – дополнительная линейная секция C – угловая секция section type, where B – basic section E – additional line section C – corner section modello di scaffale, dove B – elemento base E – elemento lineare aggiuntivo C – elemento angolare</p> |
|--|--|

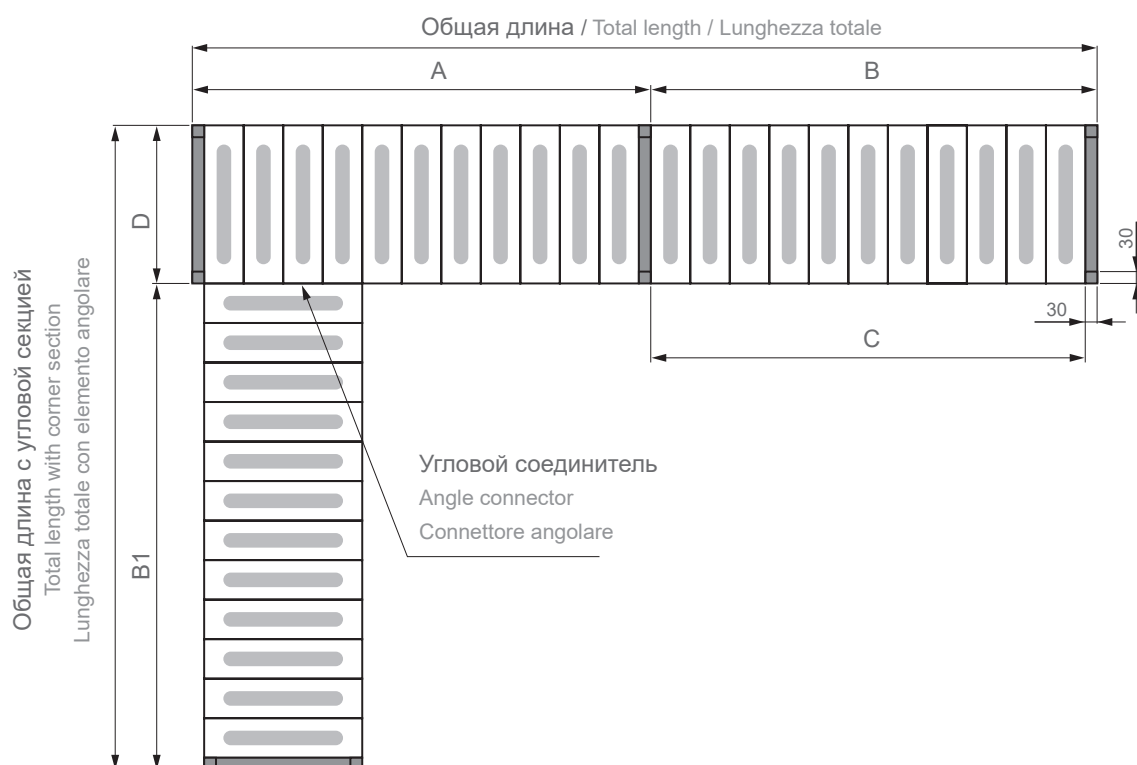
РАЗМЕРНЫЙ РЯД МОДУЛЕЙ

Size range of modules / Dimensioni di scaffali modulari

| | | | | | | | | | | | | | |
|----|-----|-----|-----|------|------|------|------|------|------|------|------|------|------|
| A | 660 | 760 | 860 | 960 | 1060 | 1160 | 1260 | 1360 | 1460 | 1560 | 1660 | 1760 | 1860 |
| B | 630 | 730 | 830 | 930 | 1030 | 1130 | 1230 | 1330 | 1430 | 1530 | 1630 | 1730 | 1830 |
| B1 | 630 | 730 | 830 | 930 | 1030 | 1130 | 1230 | 1330 | 1430 | 1530 | 1630 | 1730 | 1830 |
| C | 600 | 700 | 800 | 900 | 1000 | 1100 | 1200 | 1300 | 1400 | 1500 | 1600 | 1700 | 1800 |
| D | 300 | 400 | 500 | 550* | | | | | | | | | |

*Вариант исполнения под gastronorm GN

*Execution option for gastronorm container GN / *Versione per l'uso di contenitori gastronorm GN



| Длина, мм Length, mm Lunghezza, mm | 600 | 700 | 800 | 900 | 1000 | 1100 | 1200 | 1300 | 1400 | 1500 | 1600 | 1700 | 1800 |
|--|-----|-----|-----|-----|------|------|------|------|------|------|------|------|------|
| | 190 | 170 | 150 | 130 | 120 | 110 | 100 | 95 | 90 | 80 | 75 | 70 | 65 |

ЦВЕТОВОЕ РЕШЕНИЕ ПОЛОК

Color options for shelves / Colori dei ripiani

Стандартное решение:

Standard solution:

Colore standard:



Допустимое решение:

Additional solution:

Colori disponibili su richiesta:



Идеально для визуализации зон хранения продукции с различными сроками годности с целью обеспечения требований стандартов FIFO и HACCP.

They are ideal to visualize the storage areas of products with different expiring dates according to FIFO and HACCP standards requirements / Ideale per evidenziare le aree di stoccaggio di prodotti con diverse date di scadenze nel rispetto del protocollo FIFO e del sistema HACCP

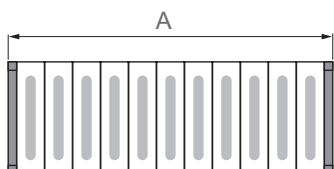
ВАРИАНТЫ КОМПОНОВКИ СТЕЛЛАЖЕЙ

Shelving layout options / Esempi di composizioni scaffalature

Базовая секция

Basic section

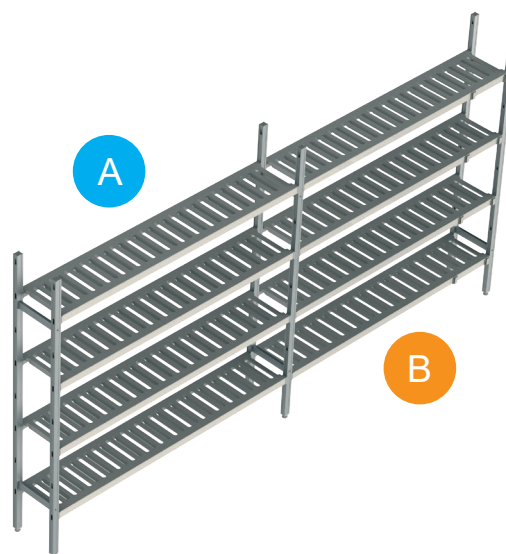
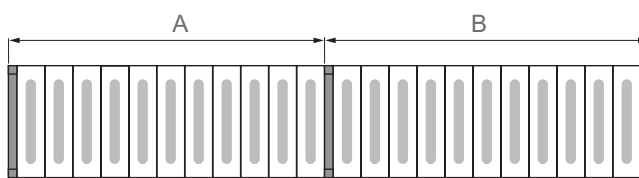
Elemento base



Базовая секция + дополнительная линейная секция

Basic section + additional line section

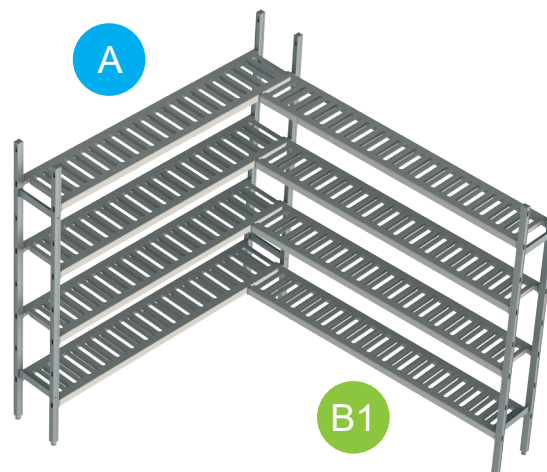
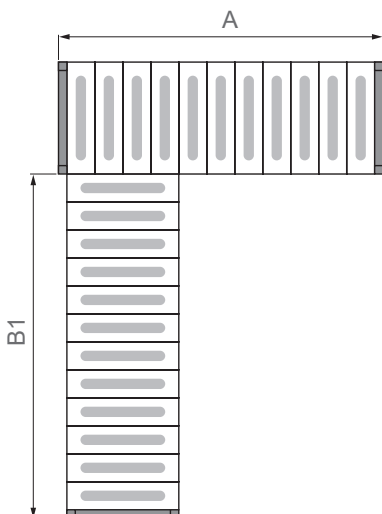
Elemento base + elemento lineare aggiuntivo



Базовая секция + угловая секция

Basic section + corner section

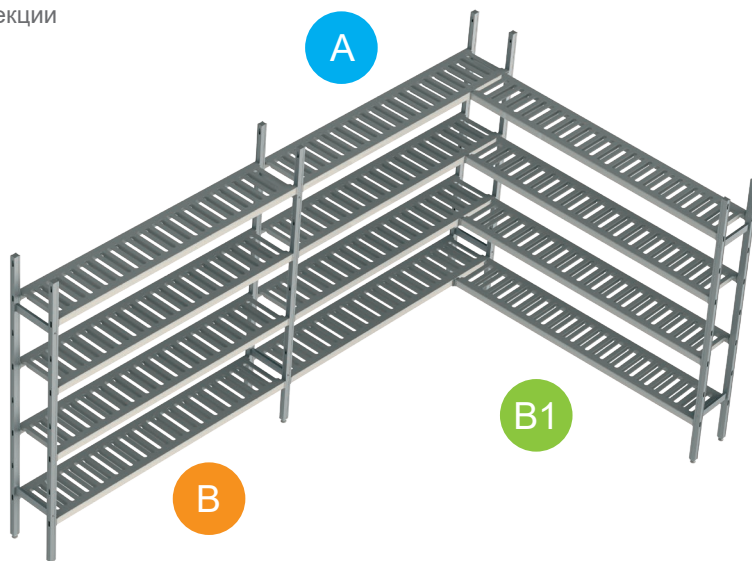
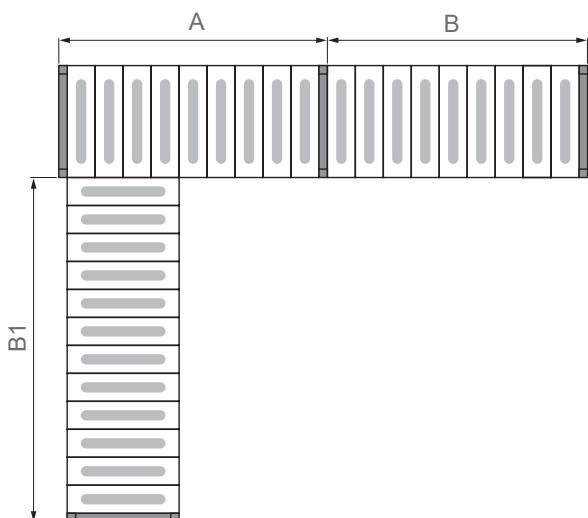
Elemento base + elemento angolare



Базовая секция + дополнительные линейная и угловая секции

Basic section + additional line and corner sections

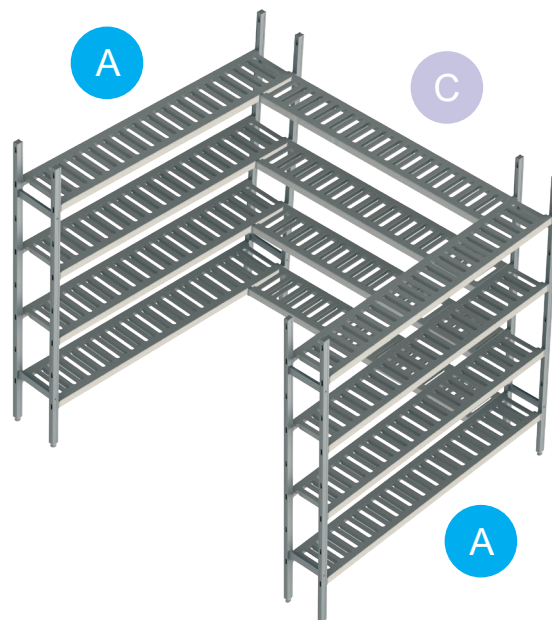
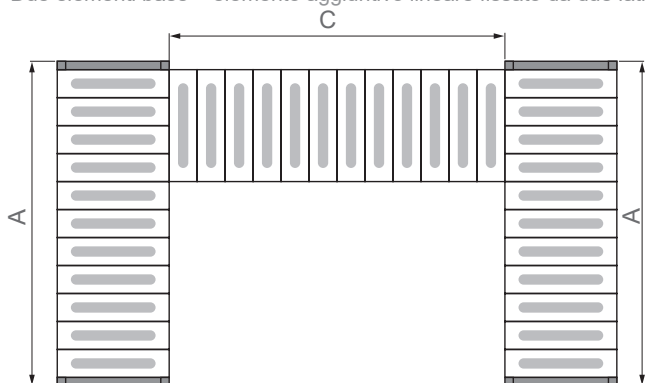
Elemento base + elementi aggiuntivi lineare ed angolare



Две базовые секции + дополнительная линейная с фиксацией с двух сторон

Two basic sections + additional line section with two-side fixation

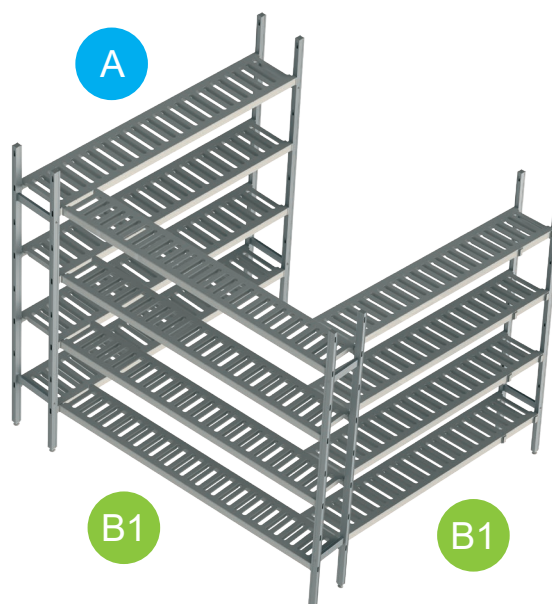
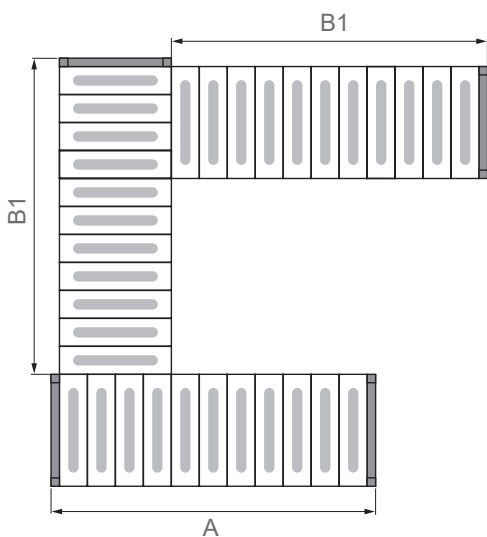
Due elementi base + elemento aggiuntivo lineare fissato da due lati

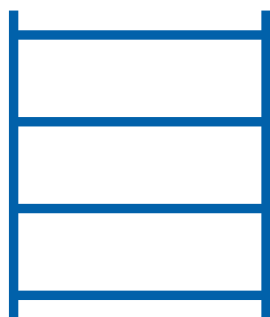


Базовая + две угловые секции

Basic section + two corner sections

Elemento base + due elementi angolari





СТРУКТУРА МОДУЛЬНОЙ СТЕЛЛАЖНОЙ СИСТЕМЫ

MODULAR SHELVING SYSTEM
STRUCTURE

SISTEMA DI SCAFFALATURE
MODULARE

ОСНОВНЫЕ СБОРОЧНЫЕ УЗЛЫ СТЕЛЛАЖНОЙ СИСТЕМЫ

The main assembly units of the shelving system / I componenti principali del sistema di scaffalature

ЛЕСТНИЦА (сб)

Комплектация:

- стойки – 2 шт
- траверсы – 3 шт
- винтовые ножки-опоры – 2шт
- заглушки – 2 шт
- винт 4,8x38 – 4 шт

End side (preassembled)

Equipped with:

- 2 racks
- 3 traversas
- 2 screw supports
- 2 rack covers
- 4 screws 4,8x38

**Struttura portante «scala»
(già assemblata)**

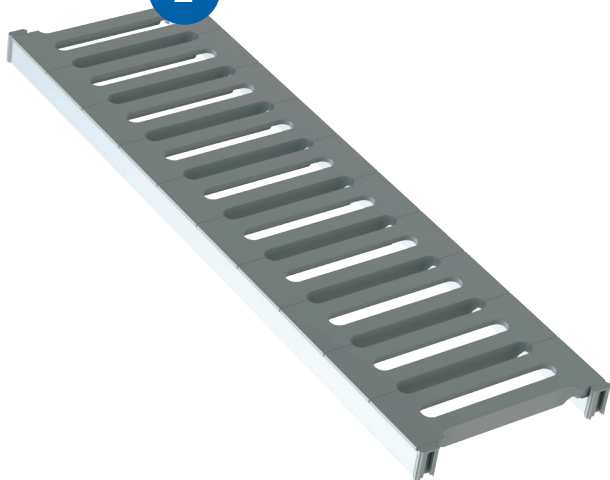
Composta di:

- 2 pz montanti
- 3 pz barre trasversali
- 2 pz piedini a vite
- 2 pz tappi di chiusura montanti
- 4 pz viti 4,8x38



| Артикул Article Articolo | Высота H, мм Height H, mm Altezza H, m | Глубина D, мм Depth D, mm Profondità D, mm | Цена, руб. Price, rubles Prezzo, rubli |
|--------------------------------|--|--|--|
| 16 AI 30F | 1600 | | 1 835 |
| 18 AI 30F | 1800 | 300 | 2 017 |
| 21 AI 30F | 2100 | | 2 289 |
| 16 AI 40F | 1600 | | 1 961 |
| 18 AI 40F | 1800 | 400 | 2 142 |
| 21 AI 40F | 2100 | | 2 414 |
| 16 AI 50F | 1600 | | 2 086 |
| 18 AI 50F | 1800 | 500 | 2 267 |
| 21 AI 50F | 2100 | | 2 539 |

2

**ПОЛКА (сб) POLY**

Комплектация полки (сб) базовой и дополнительной линейной секции:

- полка B=100 мм в количестве соответствующей длине секции (количество полок = L секции /100)
- перекладина горизонтальная длиной соответствующей длине секции – 2 шт
- торец перекладины – 4 шт
- крюк – 4 шт

Комплектация полки (сб) угловой секции:

- полка B=100 мм в количестве соответствующей длине секции (количество полок = L секции/100)
- перекладина горизонтальная длиной соответствующей длине полки – 2 шт
- торец перекладины – 4 шт
- крюк – 2 шт
- соединитель угловой – 2 шт

Shelf (preassembled) POLY

The shelf (preassembled) for basic and additional sections are equipped with:

- shelf B=100 mm in the amount corresponding to the length of the section (shelf's quantity = section L/100)
- 2 horizontal crossbars length corresponding to the length of the shelf
- 4 crossbar ends
- 4 steel hooks

The corner section (preassembled) is equipped with:

- shelf B=100 mm in the amount corresponding to the length of the section (quantity of shelf's = section's L/100)
- 2 horizontal crossbars length corresponding to the length of the shelf
- 4 crossbar ends
- 2 steel hooks
- 2 angle steel hooks

Shelf (preassembled) POLY

Per l'elemento base ed l'elemento lineare aggiuntivo è composto di:

- sezioni di larghezza a 100 mm per assemblare il ripiano; il numero di sezioni dipenderà dalla lunghezza del ripiano (n° sezioni = L ripiano/100)
- 2 pz trasversa orizzontale; la sua lunghezza corrisponde alla lunghezza del ripiano
- 4 pz estremità per la traversa
- 4 pz gancio

Per l'elemento angolare aggiuntivo è composto di:

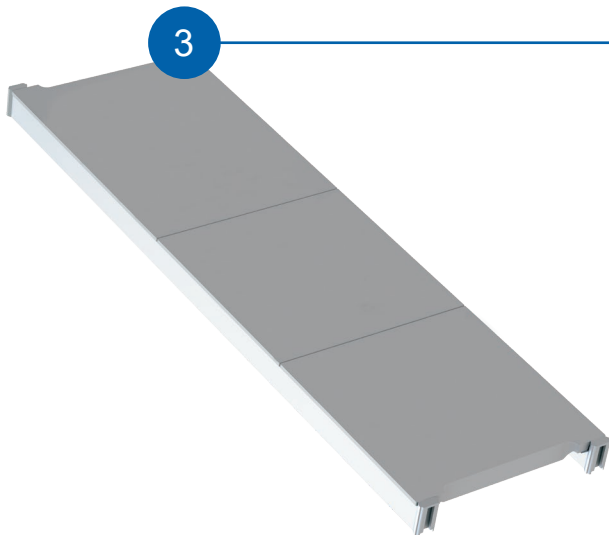
- sezioni di larghezza a 100 mm per assemblare il ripiano; il numero di sezioni dipenderà dalla lunghezza del ripiano (n° sezioni = L ripiano/100)
- 2 pz trasversa orizzontale; la sua lunghezza corrisponde alla lunghezza del ripiano
- 4 pz estremità per la traversa
- 2 pz gancio
- 2 pz connettore angolare

Уменьши
указанную цену на

15%

с 01.02 по 30.04

| Артикул полки (сб) POLY базовой и дополнительной линейной секции POLY Shelf (preassembled) article of the based and additional section Articolo ripiano (SB) POLY di base e sezione lineare aggiuntiva | Артикул полки (сб) POLY угловой секции POLY Shelf (preassembled) article of the corner section Articolo ripiano (SB) POLY sezione angolare | Длина, мм Length, mm Lunghezza, mm | Глубина, мм Depth, mm Profondità, mm | Price, rubles Prezzo, rubli | |
|--|--|--|--|--------------------------------|-------|
| 06 PP 30S | 06 PP 30C | 600 | 300 | 1 070 | |
| 07 PP 30S | 07 PP 30C | 700 | | 1 212 | |
| 08 PP 30S | 08 PP 30C | 800 | | 1 354 | |
| 09 PP 30S | 09 PP 30C | 900 | | 1 496 | |
| 10 PP 30S | 10 PP 30C | 1000 | | 1 638 | |
| 11 PP 30S | 11 PP 30C | 1100 | | 1 780 | |
| 12 PP 30S | 12 PP 30C | 1200 | | 1 922 | |
| 13 PP 30S | 13 PP 30C | 1300 | | 2 064 | |
| 14 PP 30S | 14 PP 30C | 1400 | | 2 206 | |
| 15 PP 30S | 15 PP 30C | 1500 | | 2 348 | |
| 16 PP 30S | 16 PP 30C | 1600 | | 2 490 | |
| 17 PP 30S | 17 PP 30C | 1700 | | 2 632 | |
| 18 PP 30S | 18 PP 30C | 1800 | | 2 774 | |
| 06 PP 40S | 06 PP 40C | 600 | | 400 | 1 080 |
| 07 PP 40S | 07 PP 40C | 700 | | | 1 223 |
| 08 PP 40S | 08 PP 40C | 800 | | | 1 366 |
| 09 PP 40S | 09 PP 40C | 900 | | | 1 509 |
| 10 PP 40S | 10 PP 40C | 1000 | | | 1 651 |
| 11 PP 40S | 11 PP 40C | 1100 | 1 794 | | |
| 12 PP 40S | 12 PP 40C | 1200 | 1 937 | | |
| 13 PP 40S | 13 PP 40C | 1300 | 2 080 | | |
| 14 PP 40S | 14 PP 40C | 1400 | 2 223 | | |
| 15 PP 40S | 15 PP 40C | 1500 | 2 361 | | |
| 16 PP 40S | 16 PP 40C | 1600 | 2 509 | | |
| 17 PP 40S | 17 PP 40C | 1700 | 2 662 | | |
| 18 PP 40S | 18 PP 40C | 1800 | 2 795 | | |
| 06 PP 50S | 06 PP 50C | 600 | 500 | | 1 120 |
| 07 PP 50S | 07 PP 50C | 700 | | | 1 279 |
| 08 PP 50S | 08 PP 50C | 800 | | | 1 438 |
| 09 PP 50S | 09 PP 50C | 900 | | | 1 597 |
| 10 PP 50S | 10 PP 50C | 1000 | | | 1 756 |
| 11 PP 50S | 11 PP 50C | 1100 | | 1 915 | |
| 12 PP 50S | 12 PP 50C | 1200 | | 2 074 | |
| 13 PP 50S | 13 PP 50C | 1300 | | 2 233 | |
| 14 PP 50S | 14 PP 50C | 1400 | | 2 392 | |
| 15 PP 50S | 15 PP 50C | 1500 | | 2 551 | |
| 16 PP 50S | 16 PP 50C | 1600 | | 2 710 | |
| 17 PP 50S | 17 PP 50C | 1700 | | 2 869 | |
| 18 PP 50S | 18 PP 50C | 1800 | | 3 028 | |



Shelf (preassembled) INOX

The shelf (preassembled) for basic and additional sections are equipped with:

- stainless steel shelves in size and quantity corresponding to the length of the section
- 2 horizontal crossbars length corresponding to the length of the shelf
- 4 crossbar ends
- 4 steel hooks

The corner section (preassembled) is equipped with:

- stainless steel shelves in size and quantity corresponding to the length of the section
- 2 horizontal crossbars length corresponding to the length of the shelf
- 4 crossbar ends
- 2 steel hooks
- 2 angle steel hooks

ПОЛКА (сб) INOX

Комплектация базовой и дополнительной линейной секции:

- полки из нержавеющей стали размерами и в количестве соответствующей длине полки в сборе
- перекладина горизонтальная длиной соответствующей длине полки – 2 шт
- торец перекладины – 4 шт
- крюк – 4 шт

Комплектация угловой секции:

- полки из нержавеющей стали размерами и в количестве соответствующей длине полки в сборе
- перекладина горизонтальная длиной соответствующей длине полки – 2 шт
- торец перекладины – 2 шт
- крюк – 2 шт
- соединитель угловой – 2 шт

Shelf (preassembled) INOX

Per l'elemento base ed l'elemento lineare aggiuntivo è composto di:

- mensole in acciaio INOX di dimensioni e nella quantità corrispondente alla lunghezza della sezione
- 2 pz trasversa orizzontale; la sua lunghezza corrisponde alla lunghezza del ripiano
- 4 pz estremità per la traversa
- 4 pz gancio

Per l'elemento angolare aggiuntivo è composto di:

- mensole in acciaio INOX di dimensioni e nella quantità corrispondente alla lunghezza della sezione
- 2 pz trasversa orizzontale; la sua lunghezza corrisponde alla lunghezza del ripiano
- 2 pz estremità per la traversa
- 2 pz gancio
- 2 pz connettore angolare

Уменьши
указанную цену на

15%

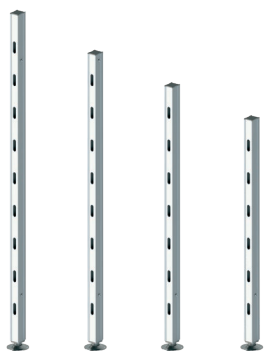
с 01.02 по 30.04

| Артикул полки (сб) INOX базовой и дополнительной линейной секции INOX Shelf (preassembled) article of the based and additional section Articolo ripiano (SB) INOX di base e sezione lineare aggiuntiva | Артикул полки (сб) INOX угловой секции INOX Shelf (preassembled) article of the corner section Articolo ripiano (SB) INOX sezione angolare | Длина, мм Length, mm Lunghezza, mm | Глубина, мм Depth, mm Profondità, mm | Размер полки, входящей в сборку, мм Shelf's size included in the kit, mm Dimensione del ripiano incluso nell'assieme, mm | Количество полок, входящих в сборку The number of shelves included in the kit Numero di ripiani inclusi nell'assieme | Цена, руб. Price, rubles Prezzo, rubli |
|--|--|--|--|--|--|--|
| 06 IN 30S | 06 IN 30C | 600 | 300 | 300x300 | 2 | 1 679 |
| 07 IN 30S | 07 IN 30C | 700 | | 300x300 400x300 | 1 1 | 1 881 |
| 08 IN 30S | 08 IN 30C | 800 | | 400x300 | 2 | 2 072 |
| 09 IN 30S | 09 IN 30C | 900 | | 300x300 | 3 | 2 367 |
| 10 IN 30S | 10 IN 30C | 1000 | | 300x300 400x300 | 2 1 | 2 569 |
| 11 IN 30S | 11 IN 30C | 1100 | | 300x300 400x300 | 1 2 | 2 767 |
| 12 IN 30S | 12 IN 30C | 1200 | | 400x300 | 3 | 2 973 |
| 13 IN 30S | 13 IN 30C | 1300 | | 300x300 400x300 | 3 1 | 3 258 |
| 14 IN 30S | 14 IN 30C | 1400 | | 300x300 400x300 | 2 2 | 3 460 |
| 15 IN 30S | 15 IN 30C | 1500 | | 300x300 400x300 | 1 3 | 3 661 |

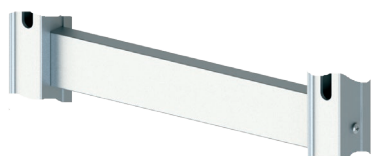
| Артикул полки (сб) INOX базовой и дополнительной линейной секции INOX Shelf (preassembled) article of the based and additional section Articolo ripiano (SB) INOX di base e sezione lineare aggiuntiva | Артикул полки (сб) INOX угловой секции INOX Shelf (preassembled) article of the corner section Articolo ripiano (SB) INOX sezione angolare | Длина, мм Length, mm Lunghezza, mm | Глубина, мм Depth, mm Profondità, mm | Размер полки, входящей в сборку, мм Shelf's size included in the kit, mm Dimensione del ripiano incluso nell'assieme, mm | Количество полок, входящих в сборку The number of shelves included in the kit Numero di ripiani inclusi nell'assieme | Цена, руб. Price, rubles Prezzo, rubli | |
|--|--|--|--|--|--|--|--------------|
| 16 IN 30S | 16 IN 30C | 1600 | 300 | 400x300 | 4 | 3 863 | |
| 17 IN 30S | 17 IN 30C | 1700 | | 300x300 400x300 | 3 2 | 4 148 | |
| 18 IN 30S | 18 IN 30C | 1800 | | 300x300 400x300 | 2 3 | 4 350 | |
| 06 IN 40S | 06 IN 40C | 600 | 400 | 300x400 | 2 | 1 914 | |
| 07 IN 40S | 07 IN 40C | 700 | | 300x400 400x400 | 1 1 | 2 135 | |
| 08 IN 40S | 08 IN 40C | 800 | | 400x400 | 2 | 2 357 | |
| 09 IN 40S | 09 IN 40C | 900 | | 300x400 | 3 | 2 720 | |
| 10 IN 40S | 10 IN 40C | 1000 | | 300x400 400x400 | 2 1 | 2 941 | |
| 11 IN 40S | 11 IN 40C | 1100 | | 300x400 400x400 | 1 2 | 3 163 | |
| 12 IN 40S | 12 IN 40C | 1200 | | 400x400 | 3 | 3 384 | |
| 13 IN 40S | 13 IN 40C | 1300 | | 300x400 400x400 | 3 1 | 3 747 | |
| 14 IN 40S | 14 IN 40C | 1400 | | 300x400 400x400 | 2 2 | 3 969 | |
| 15 IN 40S | 15 IN 40C | 1500 | | 300x400 400x400 | 1 3 | 4 190 | |
| 16 IN 40S | 16 IN 40C | 1600 | | 400x400 | 4 | 4 412 | |
| 17 IN 40S | 17 IN 40C | 1700 | | 300x400 400x400 | 3 2 | 4 775 | |
| 18 IN 40S | 18 IN 40C | 1800 | | 300x400 400x400 | 2 3 | 4 996 | |
| 06 IN 50S | 06 IN 50C | 600 | | 500 | 300x500 | 2 | 2 155 |
| 07 IN 50S | 07 IN 50C | 700 | | | 300x500 400x500 | 1 1 | 2 439 |
| 08 IN 50S | 08 IN 50C | 800 | | | 400x500 | 2 | 2 722 |
| 09 IN 50S | 09 IN 50C | 900 | | | 300x500 | 3 | 3 082 |
| 10 IN 50S | 10 IN 50C | 1000 | | | 300x500 400x500 | 2 1 | 3 365 |
| 11 IN 50S | 11 IN 50C | 1100 | 300x500 400x500 | | 1 2 | 3 649 | |
| 12 IN 50S | 12 IN 50C | 1200 | 400x500 | | 3 | 3 932 | |
| 13 IN 50S | 13 IN 50C | 1300 | 300x500 400x500 | | 3 1 | 4 292 | |
| 14 IN 50S | 14 IN 50C | 1400 | 300x500 400x500 | | 2 2 | 4 575 | |
| 15 IN 50S | 15 IN 50C | 1500 | 300x500 400x500 | | 1 3 | 4 859 | |
| 16 IN 50S | 16 IN 50C | 1600 | 400x500 | | 4 | 5 142 | |
| 17 IN 50S | 17 IN 50C | 1700 | 300x500 400x500 | | 3 2 | 5 502 | |
| 18 IN 50S | 18 IN 50C | 1800 | 300x500 400x500 | 2 3 | 5 785 | | |

МОНТАЖНЫЕ ЭЛЕМЕНТЫ

Mounting elements / Componenti di assemblaggio

**Стойка
из анодированного алюминия**Rack from anodized aluminum
Montante in alluminio anodizzato

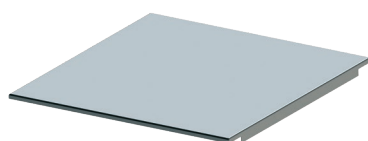
| Артикул | Высота, мм | Цена, руб. |
|----------|------------|--------------|
| RAC 1600 | 1600 | 1 700 |
| RAC 1800 | 1800 | 1 900 |
| RAC 2100 | 2100 | 2 200 |
| RAC 2400 | 2400 | 2 500 |

**Траверса**Traversa
Traversa

| Артикул | Длина, мм | Цена, руб. |
|---------|-----------|------------|
| TRA 300 | 300 | 200 |
| TRA 400 | 400 | 250 |
| TRA 500 | 500 | 300 |

**Полка из полипропилена**Polypropylene shelf
Ripiano in polipropilene

| Артикул | Глубина, мм | Цена, руб. |
|------------|-------------|------------|
| PP 100.300 | 300 | 200 |
| PP 100.400 | 400 | 250 |
| PP 100.500 | 500 | 300 |

**Полка из нержавеющей стали**Stainless steel shelf
Ripiano in acciaio Inox

| Артикул | Размеры, мм | Цена, руб. |
|------------|-------------|--------------|
| IN 300.300 | 300x300 | 700 |
| IN 400.300 | 400x300 | 900 |
| IN 300.400 | 300x400 | 950 |
| IN 400.400 | 400x400 | 1 200 |
| IN 300.500 | 300x500 | 1 100 |
| IN 400.300 | 400x500 | 1 500 |



**Крюк из стали
с защитным покрытием**

Steel hook with protective coating
Gancio in acciaio con rivestimento
protettivo

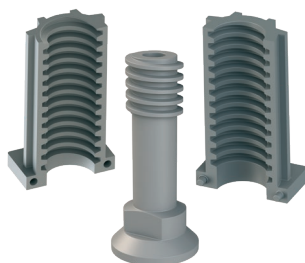
| Артикул | Цена, руб. |
|---------|------------|
| SHS 001 | 90 |



**Крюк угловой
из стали с защитным покрытием**

Steel angle hook with protective coating
Gancio angolare in acciaio
con rivestimento protettivo

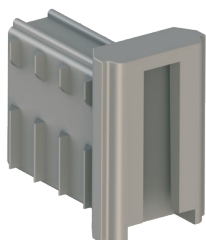
| Артикул | Цена, руб. |
|---------|------------|
| SHA 001 | 120 |



**Винтовая опора в сборе из
высокопрочного композитного
материала**

Assembles screw support from
lasting composed material
Gruppo supporto-piede a vite
in materiale composito di alta resistenza

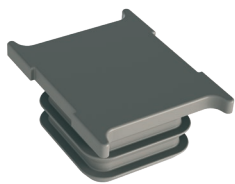
| Артикул | Цена, руб. |
|---------|------------|
| ASS 001 | 150 |



**Торец перекладины
из композитного материала**

Butt of crossbar
from composed material
Estremità della barra trasversale
in materiale composito

| Артикул | Цена, руб. |
|---------|------------|
| BUC 001 | 90 |



Заглушка стойки из композитного материала

Rack cover from composed material
Tappo di chiusura in materiale composito
per il montante

| Артикул | Цена, руб. |
|---------|------------|
| RAC 001 | 50 |



Перекладина горизонтальная (сб) из анодированного алюминия

Horizontal crossbar from
anodized aluminum
Traversa orizzontale
in alluminio anodizzato

| Артикул | Размеры, мм | Цена, руб. |
|----------|-------------|------------|
| НОС 600 | 600 | 560 |
| НОС 700 | 700 | 650 |
| НОС 800 | 800 | 740 |
| НОС 900 | 900 | 830 |
| НОС 1000 | 1000 | 920 |
| НОС 1100 | 1100 | 1 010 |
| НОС 1200 | 1200 | 1 100 |
| НОС 1300 | 1300 | 1 190 |
| НОС 1400 | 1400 | 1 280 |
| НОС 1500 | 1500 | 1 370 |
| НОС 1600 | 1600 | 1 460 |
| НОС 1700 | 1700 | 1 550 |
| НОС 1800 | 1800 | 1 640 |

ОПЦИИ

Options / Opzioni



Перегородка стандартная (сб.)

Standard partition

Barra divisoria standard

| Артикул | Размеры, мм | Цена, руб. |
|----------|-------------|--------------|
| STP 300 | 300 | 330 |
| STP 400 | 400 | 410 |
| STP 500 | 500 | 490 |
| STP 600 | 600 | 570 |
| STP 700 | 700 | 650 |
| STP 800 | 800 | 730 |
| STP 900 | 900 | 810 |
| STP 1000 | 1000 | 890 |
| STP 1100 | 1100 | 970 |
| STP 1200 | 1200 | 1 050 |
| STP 1300 | 1300 | 1 130 |
| STP 1400 | 1400 | 1 210 |
| STP 1500 | 1500 | 1 290 |
| STP 1600 | 1600 | 1 370 |
| STP 1700 | 1700 | 1 450 |
| STP 1800 | 1800 | 1 530 |

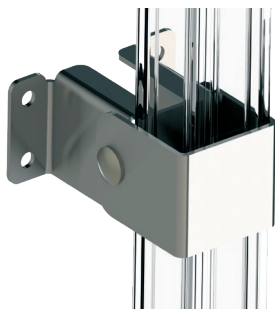


Перегородка легкая (сб.)

Light partition

Barra divisoria leggera

| Артикул | Размеры, мм | Цена, руб. |
|----------|-------------|--------------|
| LIP 300 | 300 | 270 |
| LIP 400 | 400 | 340 |
| LIP 500 | 500 | 410 |
| LIP 600 | 600 | 480 |
| LIP 700 | 700 | 550 |
| LIP 800 | 800 | 620 |
| LIP 900 | 900 | 690 |
| LIP 1000 | 1000 | 760 |
| LIP 1100 | 1100 | 830 |
| LIP 1200 | 1200 | 900 |
| LIP 1300 | 1300 | 970 |
| LIP 1400 | 1400 | 1 040 |
| LIP 1500 | 1500 | 1 110 |
| LIP 1600 | 1600 | 1 180 |
| LIP 1700 | 1700 | 1 250 |
| LIP 1800 | 1800 | 1 320 |



**Кронштейн
(крепление стеллажа к стене) (сб)**

Bracket
(wall mounting of shelving)
Supporto
(per fissaggio dello scaffale al muro)

| Артикул | Цена, руб. |
|---------|------------|
| BPA 001 | 900 |



**Фиксатор ножки к полу из
стали с защитным покрытием**

Steel leg fixer to the floor with
protective coating
Rondellain acciaio con rivestimento protettivo
per fissare il piede al pavimento

| Артикул | Цена, руб. |
|---------|------------|
| SFL 001 | 400 |



**Торец перегородки
из композитного материала**

But of partition
from composed material
Estremità della barra divisoria
in materiale composito

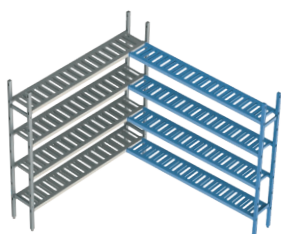
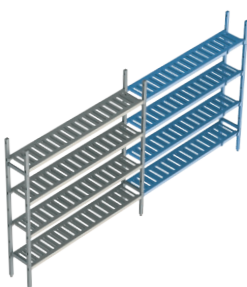
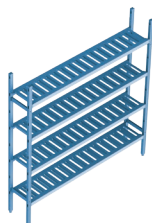
| Артикул | Цена, руб. |
|---------|------------|
| BUP 001 | 90 |



ПРАЙС-ЛИСТЫ

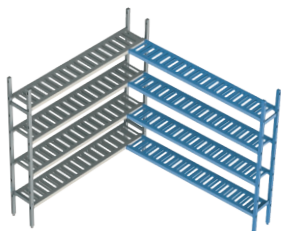
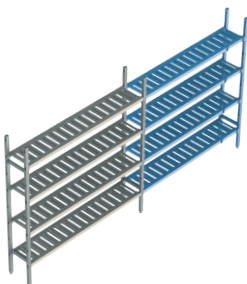
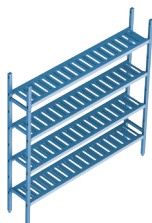
PRICE LISTS

LISTINI PREZZI

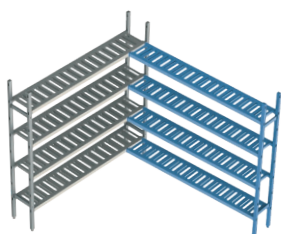
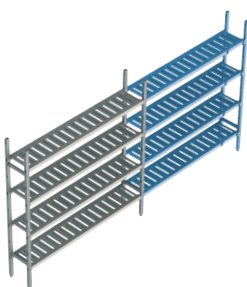
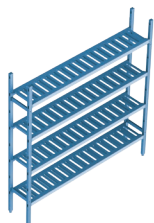
H. 1600
D. 300

| Общая длина, мм Total length, mm Lunghezza totale, mm | Длина полки, мм Shelf length, mm Lunghezza ripiano, mm | Цена, руб. / Price, rubles / Prezzo, rubli | | | | | |
|--|---|--|---------------|-------------------------------|---------------|--------------------------------|---------------|
| | | 3 яруса / 3 tiers / 3 livelli | | 4 яруса / 4 tiers / 4 livelli | | 5 ярусов / 5 tiers / 5 livelli | |
| Базовая секция Basic section / Elemento base | | | | | | | |
| 660 | 600 | 16AL.3PP30.06B | 6 692 | 16AL.4PP30.06B | 7 805 | 16AL.5PP30.06B | 8 919 |
| 760 | 700 | 16AL.3PP30.07B | 7 118 | 16AL.4PP30.07B | 8 374 | 16AL.5PP30.07B | 9 630 |
| 860 | 800 | 16AL.3PP30.08B | 7 545 | 16AL.4PP30.08B | 8 943 | 16AL.5PP30.08B | 10 340 |
| 960 | 900 | 16AL.3PP30.09B | 7 971 | 16AL.4PP30.09B | 9 511 | 16AL.5PP30.09B | 11 051 |
| 1060 | 1000 | 16AL.3PP30.10B | 8 397 | 16AL.4PP30.10B | 10 080 | 16AL.5PP30.10B | 11 762 |
| 1160 | 1100 | 16AL.3PP30.11B | 8 824 | 16AL.4PP30.11B | 10 648 | 16AL.5PP30.11B | 12 473 |
| 1260 | 1200 | 16AL.3PP30.12B | 9 250 | 16AL.4PP30.12B | 11 217 | 16AL.5PP30.12B | 13 183 |
| 1360 | 1300 | 16AL.3PP30.13B | 9 677 | 16AL.4PP30.13B | 11 785 | 16AL.5PP30.13B | 13 894 |
| 1460 | 1400 | 16AL.3PP30.14B | 10 103 | 16AL.4PP30.14B | 12 354 | 16AL.5PP30.14B | 14 605 |
| 1560 | 1500 | 16AL.3PP30.15B | 10 530 | 16AL.4PP30.15B | 12 922 | 16AL.5PP30.15B | 15 315 |
| 1660 | 1600 | 16AL.3PP30.16B | 10 956 | 16AL.4PP30.16B | 13 491 | 16AL.5PP30.16B | 16 026 |
| 1760 | 1700 | 16AL.3PP30.17B | 11 382 | 16AL.4PP30.17B | 14 060 | 16AL.5PP30.17B | 16 737 |
| 1860 | 1800 | 16AL.3PP30.18B | 11 809 | 16AL.4PP30.18B | 14 628 | 16AL.5PP30.18B | 17 447 |
| Дополнительная линейная секция Additional line section / Elemento lineare aggiuntivo | | | | | | | |
| 630 | 600 | 16AL.3PP30.06E | 4 747 | 16AL.4PP30.06E | 5 861 | 16AL.5PP30.06E | 6 976 |
| 730 | 700 | 16AL.3PP30.07E | 5 174 | 16AL.4PP30.07E | 6 430 | 16AL.5PP30.07E | 7 687 |
| 830 | 800 | 16AL.3PP30.08E | 5 600 | 16AL.4PP30.08E | 6 999 | 16AL.5PP30.08E | 8 398 |
| 930 | 900 | 16AL.3PP30.09E | 6 027 | 16AL.4PP30.09E | 7 569 | 16AL.5PP30.09E | 9 110 |
| 1030 | 1000 | 16AL.3PP30.10E | 6 454 | 16AL.4PP30.10E | 8 138 | 16AL.5PP30.10E | 9 821 |
| 1130 | 1100 | 16AL.3PP30.11E | 6 881 | 16AL.4PP30.11E | 8 707 | 16AL.5PP30.11E | 10 532 |
| 1230 | 1200 | 16AL.3PP30.12E | 7 308 | 16AL.4PP30.12E | 9 276 | 16AL.5PP30.12E | 11 243 |
| 1330 | 1300 | 16AL.3PP30.13E | 7 734 | 16AL.4PP30.13E | 9 845 | 16AL.5PP30.13E | 11 954 |
| 1430 | 1400 | 16AL.3PP30.14E | 8 161 | 16AL.4PP30.14E | 10 414 | 16AL.5PP30.14E | 12 666 |
| 1530 | 1500 | 16AL.3PP30.15E | 8 588 | 16AL.4PP30.15E | 10 983 | 16AL.5PP30.15E | 13 377 |
| 1630 | 1600 | 16AL.3PP30.16E | 9 015 | 16AL.4PP30.16E | 11 552 | 16AL.5PP30.16E | 14 088 |
| 1730 | 1700 | 16AL.3PP30.17E | 9 442 | 16AL.4PP30.17E | 12 121 | 16AL.5PP30.17E | 14 799 |
| 1830 | 1800 | 16AL.3PP30.18E | 9 869 | 16AL.4PP30.18E | 12 690 | 16AL.5PP30.18E | 15 510 |
| Угловая секция Corner section / Elemento angolare | | | | | | | |
| 630 | 600 | 16AL.3PP30.06C | 4 747 | 16AL.4PP30.06C | 5 861 | 16AL.5PP30.06C | 6 976 |
| 730 | 700 | 16AL.3PP30.07C | 5 174 | 16AL.4PP30.07C | 6 430 | 16AL.5PP30.07C | 7 687 |
| 830 | 800 | 16AL.3PP30.08C | 5 600 | 16AL.4PP30.08C | 6 999 | 16AL.5PP30.08C | 8 398 |
| 930 | 900 | 16AL.3PP30.09C | 6 027 | 16AL.4PP30.09C | 7 569 | 16AL.5PP30.09C | 9 110 |
| 1030 | 1000 | 16AL.3PP30.10C | 6 454 | 16AL.4PP30.10C | 8 138 | 16AL.5PP30.10C | 9 821 |
| 1130 | 1100 | 16AL.3PP30.11C | 6 881 | 16AL.4PP30.11C | 8 707 | 16AL.5PP30.11C | 10 532 |
| 1230 | 1200 | 16AL.3PP30.12C | 7 308 | 16AL.4PP30.12C | 9 276 | 16AL.5PP30.12C | 11 243 |
| 1330 | 1300 | 16AL.3PP30.13C | 7 734 | 16AL.4PP30.13C | 9 845 | 16AL.5PP30.13C | 11 954 |
| 1430 | 1400 | 16AL.3PP30.14C | 8 161 | 16AL.4PP30.14C | 10 414 | 16AL.5PP30.14C | 12 666 |
| 1530 | 1500 | 16AL.3PP30.15C | 8 588 | 16AL.4PP30.15C | 10 983 | 16AL.5PP30.15C | 13 377 |
| 1630 | 1600 | 16AL.3PP30.16C | 9 015 | 16AL.4PP30.16C | 11 552 | 16AL.5PP30.16C | 14 088 |
| 1730 | 1700 | 16AL.3PP30.17C | 9 442 | 16AL.4PP30.17C | 12 121 | 16AL.5PP30.17C | 14 799 |
| 1830 | 1800 | 16AL.3PP30.18C | 9 869 | 16AL.4PP30.18C | 12 690 | 16AL.5PP30.18C | 15 510 |

H. 1600
D. 400

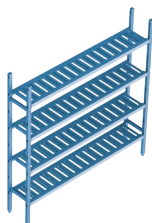


| Общая длина, мм Total length, mm Lunghezza totale, mm | Длина полки, мм Shelf length, mm Lunghezza ripiano, mm | Цена, руб. / Price, rubles / Prezzo, rubli | | | | | |
|--|--|--|---------------|-------------------------------|---------------|--------------------------------|---------------|
| | | 3 яруса / 3 tiers / 3 livelli | | 4 яруса / 4 tiers / 4 livelli | | 5 ярусов / 5 tiers / 5 livelli | |
| Базовая секция Basic section / Elemento base | | | | | | | |
| 660 | 600 | 16AL.3PP40.06B | 6 878 | 16AL.4PP40.06B | 7 996 | 16AL.5PP40.06B | 9 115 |
| 760 | 700 | 16AL.3PP40.07B | 7 307 | 16AL.4PP40.07B | 8 568 | 16AL.5PP40.07B | 9 829 |
| 860 | 800 | 16AL.3PP40.08B | 7 736 | 16AL.4PP40.08B | 9 140 | 16AL.5PP40.08B | 10 544 |
| 960 | 900 | 16AL.3PP40.09B | 8 164 | 16AL.4PP40.09B | 9 711 | 16AL.5PP40.09B | 11 258 |
| 1060 | 1000 | 16AL.3PP40.10B | 8 593 | 16AL.4PP40.10B | 10 283 | 16AL.5PP40.10B | 11 973 |
| 1160 | 1100 | 16AL.3PP40.11B | 9 022 | 16AL.4PP40.11B | 10 855 | 16AL.5PP40.11B | 12 688 |
| 1260 | 1200 | 16AL.3PP40.12B | 9 451 | 16AL.4PP40.12B | 11 426 | 16AL.5PP40.12B | 13 402 |
| 1360 | 1300 | 16AL.3PP40.13B | 9 879 | 16AL.4PP40.13B | 11 998 | 16AL.5PP40.13B | 14 117 |
| 1460 | 1400 | 16AL.3PP40.14B | 10 308 | 16AL.4PP40.14B | 12 570 | 16AL.5PP40.14B | 14 831 |
| 1560 | 1500 | 16AL.3PP40.15B | 10 737 | 16AL.4PP40.15B | 13 141 | 16AL.5PP40.15B | 15 546 |
| 1660 | 1600 | 16AL.3PP40.16B | 11 166 | 16AL.4PP40.16B | 13 713 | 16AL.5PP40.16B | 16 260 |
| 1760 | 1700 | 16AL.3PP40.17B | 11 594 | 16AL.4PP40.17B | 14 285 | 16AL.5PP40.17B | 16 975 |
| 1860 | 1800 | 16AL.3PP40.18B | 12 023 | 16AL.4PP40.18B | 14 856 | 16AL.5PP40.18B | 17 690 |
| Дополнительная линейная секция Additional line section / Elemento lineare aggiuntivo | | | | | | | |
| 630 | 600 | 16AL.3PP40.06E | 4 843 | 16AL.4PP40.06E | 5 963 | 16AL.5PP40.06E | 7 078 |
| 730 | 700 | 16AL.3PP40.07E | 5 272 | 16AL.4PP40.07E | 6 535 | 16AL.5PP40.07E | 7 793 |
| 830 | 800 | 16AL.3PP40.08E | 5 701 | 16AL.4PP40.08E | 7 106 | 16AL.5PP40.08E | 8 507 |
| 930 | 900 | 16AL.3PP40.09E | 6 130 | 16AL.4PP40.09E | 7 677 | 16AL.5PP40.09E | 9 222 |
| 1030 | 1000 | 16AL.3PP40.10E | 6 558 | 16AL.4PP40.10E | 8 248 | 16AL.5PP40.10E | 9 936 |
| 1130 | 1100 | 16AL.3PP40.11E | 6 987 | 16AL.4PP40.11E | 8 820 | 16AL.5PP40.11E | 10 651 |
| 1230 | 1200 | 16AL.3PP40.12E | 7 416 | 16AL.4PP40.12E | 9 392 | 16AL.5PP40.12E | 11 365 |
| 1330 | 1300 | 16AL.3PP40.13E | 7 845 | 16AL.4PP40.13E | 9 963 | 16AL.5PP40.13E | 12 080 |
| 1430 | 1400 | 16AL.3PP40.14E | 8 273 | 16AL.4PP40.14E | 10 535 | 16AL.5PP40.14E | 12 795 |
| 1530 | 1500 | 16AL.3PP40.15E | 8 702 | 16AL.4PP40.15E | 11 107 | 16AL.5PP40.15E | 13 509 |
| 1630 | 1600 | 16AL.3PP40.16E | 9 131 | 16AL.4PP40.16E | 11 678 | 16AL.5PP40.16E | 14 224 |
| 1730 | 1700 | 16AL.3PP40.17E | 9 560 | 16AL.4PP40.17E | 12 250 | 16AL.5PP40.17E | 14 938 |
| 1830 | 1800 | 16AL.3PP40.18E | 9 988 | 16AL.4PP40.18E | 12 822 | 16AL.5PP40.18E | 15 653 |
| Угловая секция Corner section / Elemento angolare | | | | | | | |
| 630 | 600 | 16AL.3PP40.06C | 4 843 | 16AL.4PP40.06C | 5 963 | 16AL.5PP40.06C | 7 078 |
| 730 | 700 | 16AL.3PP40.07C | 5 272 | 16AL.4PP40.07C | 6 535 | 16AL.5PP40.07C | 7 793 |
| 830 | 800 | 16AL.3PP40.08C | 5 701 | 16AL.4PP40.08C | 7 106 | 16AL.5PP40.08C | 8 507 |
| 930 | 900 | 16AL.3PP40.09C | 6 130 | 16AL.4PP40.09C | 7 677 | 16AL.5PP40.09C | 9 222 |
| 1030 | 1000 | 16AL.3PP40.10C | 6 558 | 16AL.4PP40.10C | 8 248 | 16AL.5PP40.10C | 9 936 |
| 1130 | 1100 | 16AL.3PP40.11C | 6 987 | 16AL.4PP40.11C | 8 820 | 16AL.5PP40.11C | 10 651 |
| 1230 | 1200 | 16AL.3PP40.12C | 7 416 | 16AL.4PP40.12C | 9 392 | 16AL.5PP40.12C | 11 365 |
| 1330 | 1300 | 16AL.3PP40.13C | 7 845 | 16AL.4PP40.13C | 9 963 | 16AL.5PP40.13C | 12 080 |
| 1430 | 1400 | 16AL.3PP40.14C | 8 273 | 16AL.4PP40.14C | 10 535 | 16AL.5PP40.14C | 12 795 |
| 1530 | 1500 | 16AL.3PP40.15C | 8 702 | 16AL.4PP40.15C | 11 107 | 16AL.5PP40.15C | 13 509 |
| 1630 | 1600 | 16AL.3PP40.16C | 9 131 | 16AL.4PP40.16C | 11 678 | 16AL.5PP40.16C | 14 224 |
| 1730 | 1700 | 16AL.3PP40.17C | 9 560 | 16AL.4PP40.17C | 12 250 | 16AL.5PP40.17C | 14 938 |
| 1830 | 1800 | 16AL.3PP40.18C | 9 988 | 16AL.4PP40.18C | 12 822 | 16AL.5PP40.18C | 15 653 |

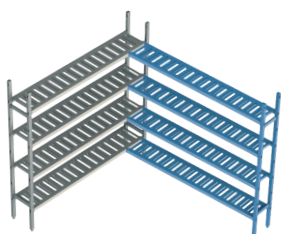
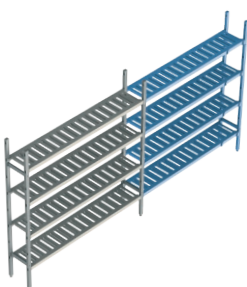
H. 1600
D. 500

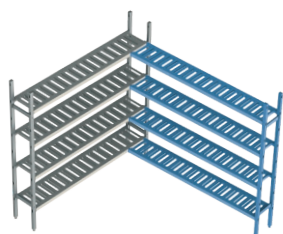
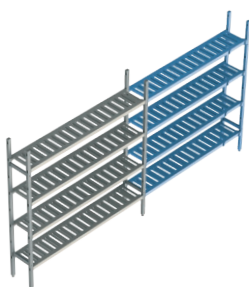
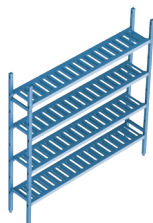
| Общая длина, мм Total length, mm Lunghezza totale, mm | Длина полки, мм Shelf length, mm Lunghezza ripiano, mm | Цена, руб. / Price, rubles / Prezzo, rubli | | | | | |
|--|---|--|---------------|-------------------------------|---------------|--------------------------------|---------------|
| | | 3 яруса / 3 tiers / 3 livelli | | 4 яруса / 4 tiers / 4 livelli | | 5 ярусов / 5 tiers / 5 livelli | |
| Базовая секция Basic section / Elemento base | | | | | | | |
| 660 | 600 | 16AL.3PP50.06B | 7 333 | 16AL.4PP50.06B | 8 545 | 16AL.5PP50.06B | 9 757 |
| 760 | 700 | 16AL.3PP50.07B | 7 808 | 16AL.4PP50.07B | 9 179 | 16AL.5PP50.07B | 10 550 |
| 860 | 800 | 16AL.3PP50.08B | 8 284 | 16AL.4PP50.08B | 9 814 | 16AL.5PP50.08B | 11 343 |
| 960 | 900 | 16AL.3PP50.09B | 8 760 | 16AL.4PP50.09B | 10 448 | 16AL.5PP50.09B | 12 136 |
| 1060 | 1000 | 16AL.3PP50.10B | 9 236 | 16AL.4PP50.10B | 11 082 | 16AL.5PP50.10B | 12 929 |
| 1160 | 1100 | 16AL.3PP50.11B | 9 711 | 16AL.4PP50.11B | 11 717 | 16AL.5PP50.11B | 13 722 |
| 1260 | 1200 | 16AL.3PP50.12B | 10 187 | 16AL.4PP50.12B | 12 351 | 16AL.5PP50.12B | 14 515 |
| 1360 | 1300 | 16AL.3PP50.13B | 10 663 | 16AL.4PP50.13B | 12 986 | 16AL.5PP50.13B | 15 308 |
| 1460 | 1400 | 16AL.3PP50.14B | 11 139 | 16AL.4PP50.14B | 13 620 | 16AL.5PP50.14B | 16 101 |
| 1560 | 1500 | 16AL.3PP50.15B | 11 615 | 16AL.4PP50.15B | 14 254 | 16AL.5PP50.15B | 16 894 |
| 1660 | 1600 | 16AL.3PP50.16B | 12 090 | 16AL.4PP50.16B | 14 889 | 16AL.5PP50.16B | 17 687 |
| 1760 | 1700 | 16AL.3PP50.17B | 12 566 | 16AL.4PP50.17B | 15 523 | 16AL.5PP50.17B | 18 480 |
| 1860 | 1800 | 16AL.3PP50.18B | 13 042 | 16AL.4PP530.18B | 16 158 | 16AL.5PP50.18B | 19 273 |
| Дополнительная линейная секция Additional line section / Elemento lineare aggiuntivo | | | | | | | |
| 630 | 600 | 16AL.3PP50.06E | 5 213 | 16AL.4PP50.06E | 6 425 | 16AL.5PP50.06E | 7 638 |
| 730 | 700 | 16AL.3PP50.07E | 5 689 | 16AL.4PP50.07E | 7 060 | 16AL.5PP50.07E | 8 431 |
| 830 | 800 | 16AL.3PP50.08E | 6 165 | 16AL.4PP50.08E | 7 694 | 16AL.5PP50.08E | 9 224 |
| 930 | 900 | 16AL.3PP50.09E | 6 640 | 16AL.4PP50.09E | 8 329 | 16AL.5PP50.09E | 10 017 |
| 1030 | 1000 | 16AL.3PP50.10E | 7 116 | 16AL.4PP50.10E | 8 963 | 16AL.5PP50.10E | 10 810 |
| 1130 | 1100 | 16AL.3PP50.11E | 7 592 | 16AL.4PP50.11E | 9 597 | 16AL.5PP50.11E | 11 603 |
| 1230 | 1200 | 16AL.3PP50.12E | 8 068 | 16AL.4PP50.12E | 10 232 | 16AL.5PP50.12E | 12 396 |
| 1330 | 1300 | 16AL.3PP50.13E | 8 544 | 16AL.4PP50.13E | 10 866 | 16AL.5PP50.13E | 13 189 |
| 1430 | 1400 | 16AL.3PP50.14E | 9 019 | 16AL.4PP50.14E | 11 501 | 16AL.5PP50.14E | 13 982 |
| 1530 | 1500 | 16AL.3PP50.15E | 9 495 | 16AL.4PP50.15E | 12 135 | 16AL.5PP50.15E | 14 775 |
| 1630 | 1600 | 16AL.3PP50.16E | 9 971 | 16AL.4PP50.16E | 12 769 | 16AL.5PP50.16E | 15 568 |
| 1730 | 1700 | 16AL.3PP50.17E | 10 447 | 16AL.4PP50.17E | 13 404 | 16AL.5PP50.17E | 16 361 |
| 1830 | 1800 | 16AL.3PP50.18E | 10 923 | 16AL.4PP50.18E | 14 038 | 16AL.5PP50.18E | 17 154 |
| Угловая секция Corner section / Elemento angolare | | | | | | | |
| 630 | 600 | 16AL.3PP50.06C | 5 213 | 16AL.4PP50.06C | 6 425 | 16AL.5PP50.06C | 7 638 |
| 730 | 700 | 16AL.3PP50.07C | 5 689 | 16AL.4PP50.07C | 7 060 | 16AL.5PP50.07C | 8 431 |
| 830 | 800 | 16AL.3PP50.08C | 6 165 | 16AL.4PP50.08C | 7 694 | 16AL.5PP50.08C | 9 224 |
| 930 | 900 | 16AL.3PP50.09C | 6 640 | 16AL.4PP50.09C | 8 329 | 16AL.5PP50.09C | 10 017 |
| 1030 | 1000 | 16AL.3PP50.10C | 7 116 | 16AL.4PP50.10C | 8 963 | 16AL.5PP50.10C | 10 810 |
| 1130 | 1100 | 16AL.3PP50.11C | 7 592 | 16AL.4PP50.11C | 9 597 | 16AL.5PP50.11C | 11 603 |
| 1230 | 1200 | 16AL.3PP50.12C | 8 068 | 16AL.4PP50.12C | 10 232 | 16AL.5PP50.12C | 12 396 |
| 1330 | 1300 | 16AL.3PP50.13C | 8 544 | 16AL.4PP50.13C | 10 866 | 16AL.5PP50.13C | 13 189 |
| 1430 | 1400 | 16AL.3PP50.14C | 9 019 | 16AL.4PP50.14C | 11 501 | 16AL.5PP50.14C | 13 982 |
| 1530 | 1500 | 16AL.3PP50.15C | 9 495 | 16AL.4PP50.15C | 12 135 | 16AL.5PP50.15C | 14 775 |
| 1630 | 1600 | 16AL.3PP50.16C | 9 971 | 16AL.4PP50.16C | 12 769 | 16AL.5PP50.16C | 15 568 |
| 1730 | 1700 | 16AL.3PP50.17C | 10 447 | 16AL.4PP50.17C | 13 404 | 16AL.5PP50.17C | 16 361 |
| 1830 | 1800 | 16AL.3PP50.18C | 10 923 | 16AL.4PP50.18C | 14 038 | 16AL.5PP50.18C | 17 154 |

H. 1800
D. 300



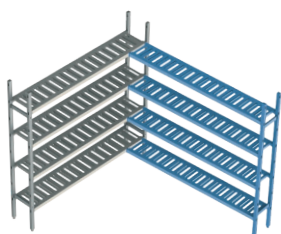
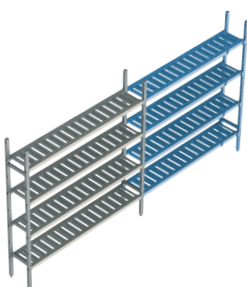
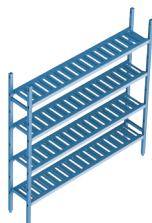
| Общая длина, мм Total length, mm Lunghezza totale, mm | Длина полки, мм Shelf length, mm Lunghezza ripiano, mm | Цена, руб. / Price, rubles / Prezzo, rubli | | | | | |
|--|--|--|---------------|-------------------------------|---------------|--------------------------------|---------------|
| | | 3 яруса / 3 tiers / 3 livelli | | 4 яруса / 4 tiers / 4 livelli | | 5 ярусов / 5 tiers / 5 livelli | |
| Базовая секция Basic section / Elemento base | | | | | | | |
| 660 | 600 | 18AL.3PP30.06B | 7 247 | 18AL.4PP30.06B | 8 361 | 18AL.5PP30.06B | 9 475 |
| 760 | 700 | 18AL.3PP30.07B | 7 674 | 18AL.4PP30.07B | 8 930 | 18AL.5PP30.07B | 10 185 |
| 860 | 800 | 18AL.3PP30.08B | 8 100 | 18AL.4PP30.08B | 9 498 | 18AL.5PP30.08B | 10 896 |
| 960 | 900 | 18AL.3PP30.09B | 8 527 | 18AL.4PP30.09B | 10 067 | 18AL.5PP30.09B | 11 607 |
| 1060 | 1000 | 18AL.3PP30.10B | 8 953 | 18AL.4PP30.10B | 10 635 | 18AL.5PP30.10B | 12 318 |
| 1160 | 1100 | 18AL.3PP30.11B | 9 380 | 18AL.4PP30.11B | 11 204 | 18AL.5PP30.11B | 13 028 |
| 1260 | 1200 | 18AL.3PP30.12B | 9 806 | 18AL.4PP30.12B | 11 772 | 18AL.5PP30.12B | 13 739 |
| 1360 | 1300 | 18AL.3PP30.13B | 10 232 | 18AL.4PP30.13B | 12 341 | 18AL.5PP30.13B | 14 450 |
| 1460 | 1400 | 18AL.3PP30.14B | 10 659 | 18AL.4PP30.14B | 12 910 | 18AL.5PP30.14B | 15 160 |
| 1560 | 1500 | 18AL.3PP30.15B | 11 085 | 18AL.4PP30.15B | 13 478 | 18AL.5PP30.15B | 15 871 |
| 1660 | 1600 | 18AL.3PP30.16B | 11 512 | 18AL.4PP30.16B | 14 047 | 18AL.5PP30.16B | 16 582 |
| 1760 | 1700 | 18AL.3PP30.17B | 11 938 | 18AL.4PP30.17B | 14 615 | 18AL.5PP30.17B | 17 292 |
| 1860 | 1800 | 18AL.3PP30.18B | 12 364 | 18AL.4PP30.18B | 15 184 | 18AL.5PP30.18B | 18 003 |
| Дополнительная линейная секция Additional line section / Elemento lineare aggiuntivo | | | | | | | |
| 630 | 600 | 18AL.3PP30.06E | 5 303 | 18AL.4PP30.06E | 6 417 | 18AL.5PP30.06E | 7 531 |
| 730 | 700 | 18AL.3PP30.07E | 5 729 | 18AL.4PP30.07E | 6 986 | 18AL.5PP30.07E | 8 243 |
| 830 | 800 | 18AL.3PP30.08E | 6 156 | 18AL.4PP30.08E | 7 555 | 18AL.5PP30.08E | 8 954 |
| 930 | 900 | 18AL.3PP30.09E | 6 583 | 18AL.4PP30.09E | 8 124 | 18AL.5PP30.09E | 9 665 |
| 1030 | 1000 | 18AL.3PP30.10E | 7 010 | 18AL.4PP30.10E | 8 693 | 18AL.5PP30.10E | 10 377 |
| 1130 | 1100 | 18AL.3PP30.11E | 7 437 | 18AL.4PP30.11E | 9 262 | 18AL.5PP30.11E | 11 088 |
| 1230 | 1200 | 18AL.3PP30.12E | 7 863 | 18AL.4PP30.12E | 9 831 | 18AL.5PP30.12E | 11 799 |
| 1330 | 1300 | 18AL.3PP30.13E | 8 290 | 18AL.4PP30.13E | 10 400 | 18AL.5PP30.13E | 12 510 |
| 1430 | 1400 | 18AL.3PP30.14E | 8 717 | 18AL.4PP30.14E | 10 970 | 18AL.5PP30.14E | 13 221 |
| 1530 | 1500 | 18AL.3PP30.15E | 9 144 | 18AL.4PP30.15E | 11 539 | 18AL.5PP30.15E | 13 932 |
| 1630 | 1600 | 18AL.3PP30.16E | 9 571 | 18AL.4PP30.16E | 12 108 | 18AL.5PP30.16E | 14 644 |
| 1730 | 1700 | 18AL.3PP30.17E | 9 997 | 18AL.4PP30.17E | 12 677 | 18AL.5PP30.17E | 15 355 |
| 1830 | 1800 | 18AL.3PP30.18E | 10 424 | 18AL.4PP30.18E | 13 246 | 18AL.5PP30.18E | 16 066 |
| Угловая секция Corner section / Elemento angolare | | | | | | | |
| 630 | 600 | 18AL.3PP30.06C | 5 303 | 18AL.4PP30.06C | 6 417 | 18AL.5PP30.06C | 7 531 |
| 730 | 700 | 18AL.3PP30.07C | 5 729 | 18AL.4PP30.07C | 6 986 | 18AL.5PP30.07C | 8 243 |
| 830 | 800 | 18AL.3PP30.08C | 6 156 | 18AL.4PP30.08C | 7 555 | 18AL.5PP30.08C | 8 954 |
| 930 | 900 | 18AL.3PP30.09C | 6 583 | 18AL.4PP30.09C | 8 124 | 18AL.5PP30.09C | 9 665 |
| 1030 | 1000 | 18AL.3PP30.10C | 7 010 | 18AL.4PP30.10C | 8 693 | 18AL.5PP30.10C | 10 377 |
| 1130 | 1100 | 18AL.3PP30.11C | 7 437 | 18AL.4PP30.11C | 9 262 | 18AL.5PP30.11C | 11 088 |
| 1230 | 1200 | 18AL.3PP30.12C | 7 863 | 18AL.4PP30.12C | 9 831 | 18AL.5PP30.12C | 11 799 |
| 1330 | 1300 | 18AL.3PP30.13C | 8 290 | 18AL.4PP30.13C | 10 400 | 18AL.5PP30.13C | 12 510 |
| 1430 | 1400 | 18AL.3PP30.14C | 8 717 | 18AL.4PP30.14C | 10 970 | 18AL.5PP30.14C | 13 221 |
| 1530 | 1500 | 18AL.3PP30.15C | 9 144 | 18AL.4PP30.15C | 11 539 | 18AL.5PP30.15C | 13 932 |
| 1630 | 1600 | 18AL.3PP30.16C | 9 571 | 18AL.4PP30.16C | 12 108 | 18AL.5PP30.16C | 14 644 |
| 1730 | 1700 | 18AL.3PP30.17C | 9 997 | 18AL.4PP30.17C | 12 677 | 18AL.5PP30.17C | 15 355 |
| 1830 | 1800 | 18AL.3PP30.18C | 10 424 | 18AL.4PP30.18C | 13 246 | 18AL.5PP30.18C | 16 066 |



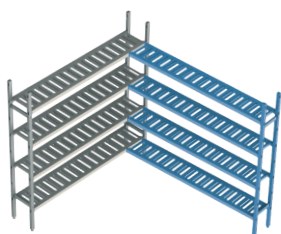
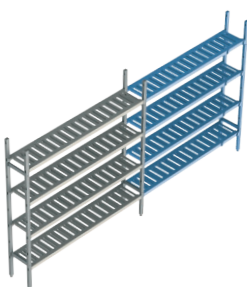
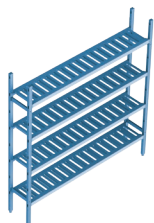
H. 1800
D. 400

| Общая длина, мм Total length, mm Lunghezza totale, mm | Длина полки, мм Shelf length, mm Lunghezza ripiano, mm | Цена, руб. / Price, rubles / Prezzo, rubli | | | | | |
|--|---|--|---------------|-------------------------------|---------------|--------------------------------|---------------|
| | | 3 яруса / 3 tiers / 3 livelli | | 4 яруса / 4 tiers / 4 livelli | | 5 ярусов / 5 tiers / 5 livelli | |
| Базовая секция Basic section / Elemento base | | | | | | | |
| 660 | 600 | 18AL.3PP40.06B | 7 434 | 18AL.4PP40.06B | 8 552 | 18AL.5PP40.06B | 9 670 |
| 760 | 700 | 18AL.3PP40.07B | 7 862 | 18AL.4PP40.07B | 9 124 | 18AL.5PP40.07B | 10 385 |
| 860 | 800 | 18AL.3PP40.08B | 8 291 | 18AL.4PP40.08B | 9 695 | 18AL.5PP40.08B | 11 099 |
| 960 | 900 | 18AL.3PP40.09B | 8 720 | 18AL.4PP40.09B | 10 267 | 18AL.5PP40.09B | 11 814 |
| 1060 | 1000 | 18AL.3PP40.10B | 9 149 | 18AL.4PP40.10B | 10 839 | 18AL.5PP40.10B | 12 529 |
| 1160 | 1100 | 18AL.3PP40.11B | 9 577 | 18AL.4PP40.11B | 11 410 | 18AL.5PP40.11B | 13 243 |
| 1260 | 1200 | 18AL.3PP40.12B | 10 006 | 18AL.4PP40.12B | 11 982 | 18AL.5PP40.12B | 13 958 |
| 1360 | 1300 | 18AL.3PP40.13B | 10 435 | 18AL.4PP40.13B | 12 554 | 18AL.5PP40.13B | 14 672 |
| 1460 | 1400 | 18AL.3PP40.14B | 10 864 | 18AL.4PP40.14B | 13 125 | 18AL.5PP40.14B | 15 387 |
| 1560 | 1500 | 18AL.3PP40.15B | 11 292 | 18AL.4PP40.15B | 13 697 | 18AL.5PP40.15B | 16 102 |
| 1660 | 1600 | 18AL.3PP40.16B | 11 721 | 18AL.4PP40.16B | 14 269 | 18AL.5PP40.16B | 16 816 |
| 1760 | 1700 | 18AL.3PP40.17B | 12 150 | 18AL.4PP40.17B | 14 840 | 18AL.5PP40.17B | 17 531 |
| 1860 | 1800 | 18AL.3PP40.18B | 12 579 | 18AL.4PP40.18B | 15 412 | 18AL.5PP40.18B | 18 245 |
| Дополнительная линейная секция Additional line section / Elemento lineare aggiuntivo | | | | | | | |
| 630 | 600 | 18AL.3PP40.06E | 5 399 | 18AL.4PP40.06E | 6 519 | 18AL.5PP40.06E | 7 634 |
| 730 | 700 | 18AL.3PP40.07E | 5 828 | 18AL.4PP40.07E | 7 090 | 18AL.5PP40.07E | 8 348 |
| 830 | 800 | 18AL.3PP40.08E | 6 256 | 18AL.4PP40.08E | 7 662 | 18AL.5PP40.08E | 9 063 |
| 930 | 900 | 18AL.3PP40.09E | 6 685 | 18AL.4PP40.09E | 8 232 | 18AL.5PP40.09E | 9 777 |
| 1030 | 1000 | 18AL.3PP40.10E | 7 114 | 18AL.4PP40.10E | 8 804 | 18AL.5PP40.10E | 10 492 |
| 1130 | 1100 | 18AL.3PP40.11E | 7 543 | 18AL.4PP40.11E | 9 376 | 18AL.5PP40.11E | 11 207 |
| 1230 | 1200 | 18AL.3PP40.12E | 7 971 | 18AL.4PP40.12E | 9 947 | 18AL.5PP40.12E | 11 921 |
| 1330 | 1300 | 18AL.3PP40.13E | 8 400 | 18AL.4PP40.13E | 10 519 | 18AL.5PP40.13E | 12 636 |
| 1430 | 1400 | 18AL.3PP40.14E | 8 829 | 18AL.4PP40.14E | 11 091 | 18AL.5PP40.14E | 13 350 |
| 1530 | 1500 | 18AL.3PP40.15E | 9 258 | 18AL.4PP40.15E | 11 662 | 18AL.5PP40.15E | 14 065 |
| 1630 | 1600 | 18AL.3PP40.16E | 9 686 | 18AL.4PP40.16E | 12 234 | 18AL.5PP40.16E | 14 779 |
| 1730 | 1700 | 18AL.3PP40.17E | 10 115 | 18AL.4PP40.17E | 12 806 | 18AL.5PP40.17E | 15 494 |
| 1830 | 1800 | 18AL.3PP40.18E | 10 544 | 18AL.4PP40.18E | 13 377 | 18AL.5PP40.18E | 16 209 |
| Угловая секция Corner section / Elemento angolare | | | | | | | |
| 630 | 600 | 18AL.3PP40.06C | 5 399 | 18AL.4PP40.06C | 6 519 | 18AL.5PP40.06C | 7 634 |
| 730 | 700 | 18AL.3PP40.07C | 5 828 | 18AL.4PP40.07C | 7 090 | 18AL.5PP40.07C | 8 348 |
| 830 | 800 | 18AL.3PP40.08C | 6 256 | 18AL.4PP40.08C | 7 662 | 18AL.5PP40.08C | 9 063 |
| 930 | 900 | 18AL.3PP40.09C | 6 685 | 18AL.4PP40.09C | 8 232 | 18AL.5PP40.09C | 9 777 |
| 1030 | 1000 | 18AL.3PP40.10C | 7 114 | 18AL.4PP40.10C | 8 804 | 18AL.5PP40.10C | 10 492 |
| 1130 | 1100 | 18AL.3PP40.11C | 7 543 | 18AL.4PP40.11C | 9 376 | 18AL.5PP40.11C | 11 207 |
| 1230 | 1200 | 18AL.3PP40.12C | 7 971 | 18AL.4PP40.12C | 9 947 | 18AL.5PP40.12C | 11 921 |
| 1330 | 1300 | 18AL.3PP40.13C | 8 400 | 18AL.4PP40.13C | 10 519 | 18AL.5PP40.13C | 12 636 |
| 1430 | 1400 | 18AL.3PP40.14C | 8 829 | 18AL.4PP40.14C | 11 091 | 18AL.5PP40.14C | 13 350 |
| 1530 | 1500 | 18AL.3PP40.15C | 9 258 | 18AL.4PP40.15C | 11 662 | 18AL.5PP40.15C | 14 065 |
| 1630 | 1600 | 18AL.3PP40.16C | 9 686 | 18AL.4PP40.16C | 12 234 | 18AL.5PP40.16C | 14 779 |
| 1730 | 1700 | 18AL.3PP40.17C | 10 115 | 18AL.4PP40.17C | 12 806 | 18AL.5PP40.17C | 15 494 |
| 1830 | 1800 | 18AL.3PP40.18C | 10 544 | 18AL.4PP40.18C | 13 377 | 18AL.5PP40.18C | 16 209 |

H. 1800
D. 500

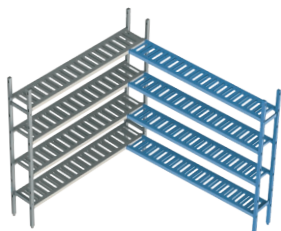
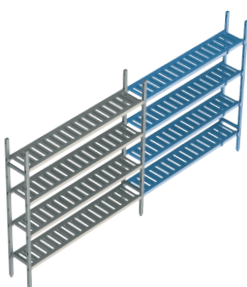
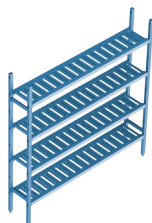


| Общая длина, мм Total length, mm Lunghezza totale, mm | Длина полки, мм Shelf length, mm Lunghezza ripiano, mm | Цена, руб. / Price, rubles / Prezzo, rubli | | | | | |
|--|---|--|---------------|-------------------------------|---------------|--------------------------------|---------------|
| | | 3 яруса / 3 tiers / 3 livelli | | 4 яруса / 4 tiers / 4 livelli | | 5 ярусов / 5 tiers / 5 livelli | |
| Базовая секция Basic section / Elemento base | | | | | | | |
| 660 | 600 | 18AL.3PP50.06B | 7 888 | 18AL.4PP50.06B | 9 101 | 18AL.5PP50.06B | 10 313 |
| 760 | 700 | 18AL.3PP50.07B | 8 364 | 18AL.4PP50.07B | 9 735 | 18AL.5PP50.07B | 11 106 |
| 860 | 800 | 18AL.3PP50.08B | 8 840 | 18AL.4PP50.08B | 10 369 | 18AL.5PP50.08B | 11 899 |
| 960 | 900 | 18AL.3PP50.09B | 9 316 | 18AL.4PP50.09B | 11 004 | 18AL.5PP50.09B | 12 692 |
| 1060 | 1000 | 18AL.3PP50.10B | 9 791 | 18AL.4PP50.10B | 11 638 | 18AL.5PP50.10B | 13 485 |
| 1160 | 1100 | 18AL.3PP50.11B | 10 267 | 18AL.4PP50.11B | 12 273 | 18AL.5PP50.11B | 14 278 |
| 1260 | 1200 | 18AL.3PP50.12B | 10 743 | 18AL.4PP50.12B | 12 907 | 18AL.5PP50.12B | 15 071 |
| 1360 | 1300 | 18AL.3PP50.13B | 11 219 | 18AL.4PP50.13B | 13 541 | 18AL.5PP50.13B | 15 864 |
| 1460 | 1400 | 18AL.3PP50.14B | 11 695 | 18AL.4PP50.14B | 14 176 | 18AL.5PP50.14B | 16 657 |
| 1560 | 1500 | 18AL.3PP50.15B | 12 170 | 18AL.4PP50.15B | 14 810 | 18AL.5PP50.15B | 17 450 |
| 1660 | 1600 | 18AL.3PP50.16B | 12 646 | 18AL.4PP50.16B | 15 444 | 18AL.5PP50.16B | 18 243 |
| 1760 | 1700 | 18AL.3PP50.17B | 13 122 | 18AL.4PP50.17B | 16 079 | 18AL.5PP50.17B | 19 036 |
| 1860 | 1800 | 18AL.3PP50.18B | 13 598 | 18AL.4PP50.18B | 16 713 | 18AL.5PP50.18B | 19 829 |
| Дополнительная линейная секция Additional line section / Elemento lineare aggiuntivo | | | | | | | |
| 630 | 600 | 18AL.3PP50.06E | 5 769 | 18AL.4PP50.06E | 6 981 | 18AL.5PP50.06E | 8 193 |
| 730 | 700 | 18AL.3PP50.07E | 6 244 | 18AL.4PP50.07E | 7 615 | 18AL.5PP50.07E | 8 986 |
| 830 | 800 | 18AL.3PP50.08E | 6 720 | 18AL.4PP50.08E | 8 250 | 18AL.5PP50.08E | 9 779 |
| 930 | 900 | 18AL.3PP50.09E | 7 196 | 18AL.4PP50.09E | 8 884 | 18AL.5PP50.09E | 10 572 |
| 1030 | 1000 | 18AL.3PP50.10E | 7 672 | 18AL.4PP50.10E | 9 519 | 18AL.5PP50.10E | 11 365 |
| 1130 | 1100 | 18AL.3PP50.11E | 8 148 | 18AL.4PP50.11E | 10 153 | 18AL.5PP50.11E | 12 158 |
| 1230 | 1200 | 18AL.3PP50.12E | 8 623 | 18AL.4PP50.12E | 10 787 | 18AL.5PP50.12E | 12 951 |
| 1330 | 1300 | 18AL.3PP50.13E | 9 099 | 18AL.4PP50.13E | 11 422 | 18AL.5PP50.13E | 13 744 |
| 1430 | 1400 | 18AL.3PP50.14E | 9 575 | 18AL.4PP50.14E | 12 056 | 18AL.5PP50.14E | 14 537 |
| 1530 | 1500 | 18AL.3PP50.15E | 10 051 | 18AL.4PP50.15E | 12 691 | 18AL.5PP50.15E | 15 330 |
| 1630 | 1600 | 18AL.3PP50.16E | 10 527 | 18AL.4PP50.16E | 13 325 | 18AL.5PP50.16E | 16 123 |
| 1730 | 1700 | 18AL.3PP50.17E | 11 002 | 18AL.4PP50.17E | 13 959 | 18AL.5PP50.17E | 16 916 |
| 1830 | 1800 | 18AL.3PP50.18E | 11 478 | 18AL.4PP50.18E | 14 594 | 18AL.5PP50.18E | 17 709 |
| Угловая секция Corner section / Elemento angolare | | | | | | | |
| 630 | 600 | 18AL.3PP50.06C | 5 769 | 18AL.4PP50.06C | 6 981 | 18AL.5PP50.06C | 8 193 |
| 730 | 700 | 18AL.3PP50.07C | 6 244 | 18AL.4PP50.07C | 7 615 | 18AL.5PP50.07C | 8 986 |
| 830 | 800 | 18AL.3PP50.08C | 6 720 | 18AL.4PP50.08C | 8 250 | 18AL.5PP50.08C | 9 779 |
| 930 | 900 | 18AL.3PP50.09C | 7 196 | 18AL.4PP50.09C | 8 884 | 18AL.5PP50.09C | 10 572 |
| 1030 | 1000 | 18AL.3PP50.10C | 7 672 | 18AL.4PP50.10C | 9 519 | 18AL.5PP50.10C | 11 365 |
| 1130 | 1100 | 18AL.3PP50.11C | 8 148 | 18AL.4PP50.11C | 10 153 | 18AL.5PP50.11C | 12 158 |
| 1230 | 1200 | 18AL.3PP50.12C | 8 623 | 18AL.4PP50.12C | 10 787 | 18AL.5PP50.12C | 12 951 |
| 1330 | 1300 | 18AL.3PP50.13C | 9 099 | 18AL.4PP50.13C | 11 422 | 18AL.5PP50.13C | 13 744 |
| 1430 | 1400 | 18AL.3PP50.14C | 9 575 | 18AL.4PP50.14C | 12 056 | 18AL.5PP50.14C | 14 537 |
| 1530 | 1500 | 18AL.3PP50.15C | 10 051 | 18AL.4PP50.15C | 12 691 | 18AL.5PP50.15C | 15 330 |
| 1630 | 1600 | 18AL.3PP50.16C | 10 527 | 18AL.4PP50.16C | 13 325 | 18AL.5PP50.16C | 16 123 |
| 1730 | 1700 | 18AL.3PP50.17C | 11 002 | 18AL.4PP50.17C | 13 959 | 18AL.5PP50.17C | 16 916 |
| 1830 | 1800 | 18AL.3PP50.18C | 11 478 | 18AL.4PP50.18C | 14 594 | 18AL.5PP50.18C | 17 709 |

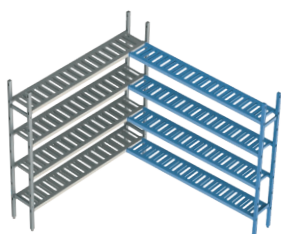
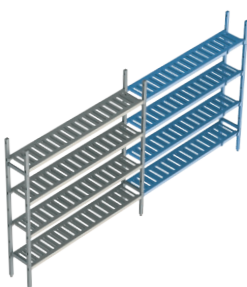
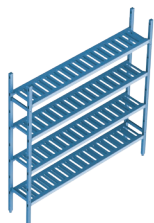
H. 2100
D. 300

| Общая длина, мм Total length, mm Lunghezza totale, mm | Длина полки, мм Shelf length, mm Lunghezza ripiano, mm | Цена, руб. / Price, rubles / Prezzo, rubli | | | | | |
|--|---|--|---------------|-------------------------------|---------------|--------------------------------|---------------|
| | | 3 яруса / 3 tiers / 3 livelli | | 4 яруса / 4 tiers / 4 livelli | | 5 ярусов / 5 tiers / 5 livelli | |
| Базовая секция Basic section / Elemento base | | | | | | | |
| 660 | 600 | 21AL.3PP30.06B | 7 803 | 21AL.4PP30.06B | 8 917 | 21AL.5PP30.06B | 10 030 |
| 760 | 700 | 21AL.3PP30.07B | 8 230 | 21AL.4PP30.07B | 9 485 | 21AL.5PP30.07B | 10 741 |
| 860 | 800 | 21AL.3PP30.08B | 8 656 | 21AL.4PP30.08B | 10 054 | 21AL.5PP30.08B | 11 452 |
| 960 | 900 | 21AL.3PP30.09B | 9 082 | 21AL.4PP30.09B | 10 622 | 21AL.5PP30.09B | 12 163 |
| 1060 | 1000 | 21AL.3PP30.10B | 9 509 | 21AL.4PP30.10B | 11 191 | 21AL.5PP30.10B | 12 873 |
| 1160 | 1100 | 21AL.3PP30.11B | 9 935 | 21AL.4PP30.11B | 11 760 | 21AL.5PP30.11B | 13 584 |
| 1260 | 1200 | 21AL.3PP30.12B | 10 362 | 21AL.4PP30.12B | 12 328 | 21AL.5PP30.12B | 14 295 |
| 1360 | 1300 | 21AL.3PP30.13B | 10 788 | 21AL.4PP30.13B | 12 897 | 21AL.5PP30.13B | 15 005 |
| 1460 | 1400 | 21AL.3PP30.14B | 11 214 | 21AL.4PP30.14B | 13 465 | 21AL.5PP30.14B | 15 716 |
| 1560 | 1500 | 21AL.3PP30.15B | 11 641 | 21AL.4PP30.15B | 14 034 | 21AL.5PP30.15B | 16 427 |
| 1660 | 1600 | 21AL.3PP30.16B | 12 067 | 21AL.4PP30.16B | 14 602 | 21AL.5PP30.16B | 17 137 |
| 1760 | 1700 | 21AL.3PP30.17B | 12 494 | 21AL.4PP30.17B | 15 171 | 21AL.5PP30.17B | 17 848 |
| 1860 | 1800 | 21AL.3PP30.18B | 12 920 | 21AL.4PP30.18B | 15 739 | 21AL.5PP30.18B | 18 559 |
| Дополнительная линейная секция Additional line section / Elemento lineare aggiuntivo | | | | | | | |
| 630 | 600 | 21AL.3PP30.06E | 5 858 | 21AL.4PP30.06E | 6 973 | 21AL.5PP30.06E | 8 087 |
| 730 | 700 | 21AL.3PP30.07E | 6 285 | 21AL.4PP30.07E | 7 542 | 21AL.5PP30.07E | 8 798 |
| 830 | 800 | 21AL.3PP30.08E | 6 712 | 21AL.4PP30.08E | 8 111 | 21AL.5PP30.08E | 9 510 |
| 930 | 900 | 21AL.3PP30.09E | 7 139 | 21AL.4PP30.09E | 8 680 | 21AL.5PP30.09E | 10 221 |
| 1030 | 1000 | 21AL.3PP30.10E | 7 565 | 21AL.4PP30.10E | 9 249 | 21AL.5PP30.10E | 10 932 |
| 1130 | 1100 | 21AL.3PP30.11E | 7 992 | 21AL.4PP30.11E | 9 818 | 21AL.5PP30.11E | 11 643 |
| 1230 | 1200 | 21AL.3PP30.12E | 8 419 | 21AL.4PP30.12E | 10 387 | 21AL.5PP30.12E | 12 355 |
| 1330 | 1300 | 21AL.3PP30.13E | 8 846 | 21AL.4PP30.13E | 10 956 | 21AL.5PP30.13E | 13 066 |
| 1430 | 1400 | 21AL.3PP30.14E | 9 273 | 21AL.4PP30.14E | 11 525 | 21AL.5PP30.14E | 13 777 |
| 1530 | 1500 | 21AL.3PP30.15E | 9 699 | 21AL.4PP30.15E | 12 094 | 21AL.5PP30.15E | 14 488 |
| 1630 | 1600 | 21AL.3PP30.16E | 10 126 | 21AL.4PP30.16E | 12 663 | 21AL.5PP30.16E | 15 199 |
| 1730 | 1700 | 21AL.3PP30.17E | 10 553 | 21AL.4PP30.17E | 13 232 | 21AL.5PP30.17E | 15 911 |
| 1830 | 1800 | 21AL.3PP30.18E | 10 980 | 21AL.4PP30.18E | 13 801 | 21AL.5PP30.18E | 16 622 |
| Угловая секция Corner section / Elemento angolare | | | | | | | |
| 630 | 600 | 21AL.3PP30.06C | 5 858 | 21AL.4PP30.06C | 6 973 | 21AL.5PP30.06C | 8 087 |
| 730 | 700 | 21AL.3PP30.07C | 6 285 | 21AL.4PP30.07C | 7 542 | 21AL.5PP30.07C | 8 798 |
| 830 | 800 | 21AL.3PP30.08C | 6 712 | 21AL.4PP30.08C | 8 111 | 21AL.5PP30.08C | 9 510 |
| 930 | 900 | 21AL.3PP30.09C | 7 139 | 21AL.4PP30.09C | 8 680 | 21AL.5PP30.09C | 10 221 |
| 1030 | 1000 | 21AL.3PP30.10C | 7 565 | 21AL.4PP30.10C | 9 249 | 21AL.5PP30.10C | 10 932 |
| 1130 | 1100 | 21AL.3PP30.11C | 7 992 | 21AL.4PP30.11C | 9 818 | 21AL.5PP30.11C | 11 643 |
| 1230 | 1200 | 21AL.3PP30.12C | 8 419 | 21AL.4PP30.12C | 10 387 | 21AL.5PP30.12C | 12 355 |
| 1330 | 1300 | 21AL.3PP30.13C | 8 846 | 21AL.4PP30.13C | 10 956 | 21AL.5PP30.13C | 13 066 |
| 1430 | 1400 | 21AL.3PP30.14C | 9 273 | 21AL.4PP30.14C | 11 525 | 21AL.5PP30.14C | 13 777 |
| 1530 | 1500 | 21AL.3PP30.15C | 9 699 | 21AL.4PP30.15C | 12 094 | 21AL.5PP30.15C | 14 488 |
| 1630 | 1600 | 21AL.3PP30.16C | 10 126 | 21AL.4PP30.16C | 12 663 | 21AL.5PP30.16C | 15 199 |
| 1730 | 1700 | 21AL.3PP30.17C | 10 553 | 21AL.4PP30.17C | 13 232 | 21AL.5PP30.17C | 15 911 |
| 1830 | 1800 | 21AL.3PP30.18C | 10 980 | 21AL.4PP30.18C | 13 801 | 21AL.5PP30.18C | 16 622 |

H. 2100
D. 400

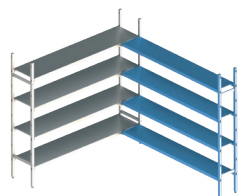
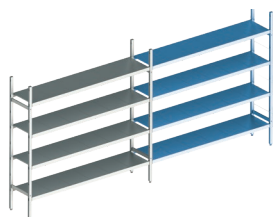
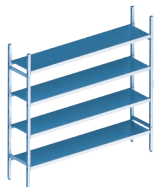


| Общая длина, мм Total length, mm Lunghezza totale, mm | Длина полки, мм Shelf length, mm Lunghezza ripiano, mm | Цена, руб. / Price, rubles / Prezzo, rubli | | | | | |
|--|---|--|---------------|-------------------------------|---------------|--------------------------------|---------------|
| | | 3 яруса / 3 tiers / 3 livelli | | 4 яруса / 4 tiers / 4 livelli | | 5 ярусов / 5 tiers / 5 livelli | |
| Базовая секция Basic section / Elemento base | | | | | | | |
| 660 | 600 | 21AL.3PP40.06B | 7 989 | 21AL.4PP40.06B | 9 108 | 21AL.5PP40.06B | 10 226 |
| 760 | 700 | 21AL.3PP40.07B | 8 418 | 21AL.4PP40.07B | 9 679 | 21AL.5PP40.07B | 10 941 |
| 860 | 800 | 21AL.3PP40.08B | 8 847 | 21AL.4PP40.08B | 10 251 | 21AL.5PP40.08B | 11 655 |
| 960 | 900 | 21AL.3PP40.09B | 9 276 | 21AL.4PP40.09B | 10 823 | 21AL.5PP40.09B | 12 370 |
| 1060 | 1000 | 21AL.3PP40.10B | 9 704 | 21AL.4PP40.10B | 11 394 | 21AL.5PP40.10B | 13 084 |
| 1160 | 1100 | 21AL.3PP40.11B | 10 133 | 21AL.4PP40.11B | 11 966 | 21AL.5PP40.11B | 13 799 |
| 1260 | 1200 | 21AL.3PP40.12B | 10 562 | 21AL.4PP40.12B | 12 538 | 21AL.5PP40.12B | 14 513 |
| 1360 | 1300 | 21AL.3PP40.13B | 10 991 | 21AL.4PP40.13B | 13 109 | 21AL.5PP40.13B | 15 228 |
| 1460 | 1400 | 21AL.3PP40.14B | 11 419 | 21AL.4PP40.14B | 13 681 | 21AL.5PP40.14B | 15 943 |
| 1560 | 1500 | 21AL.3PP40.15B | 11 848 | 21AL.4PP40.15B | 14 253 | 21AL.5PP40.15B | 16 657 |
| 1660 | 1600 | 21AL.3PP40.16B | 12 277 | 21AL.4PP40.16B | 14 824 | 21AL.5PP40.16B | 17 372 |
| 1760 | 1700 | 21AL.3PP40.17B | 12 706 | 21AL.4PP40.17B | 15 396 | 21AL.5PP40.17B | 18 086 |
| 1860 | 1800 | 21AL.3PP40.18B | 13 134 | 21AL.4PP40.18B | 15 968 | 21AL.5PP40.18B | 18 801 |
| Дополнительная линейная секция Additional line section / Elemento lineare aggiuntivo | | | | | | | |
| 630 | 600 | 21AL.3PP40.06E | 5 955 | 21AL.4PP40.06E | 7 074 | 21AL.5PP40.06E | 8 189 |
| 730 | 700 | 21AL.3PP40.07E | 6 383 | 21AL.4PP40.07E | 7 646 | 21AL.5PP40.07E | 8 904 |
| 830 | 800 | 21AL.3PP40.08E | 6 812 | 21AL.4PP40.08E | 8 218 | 21AL.5PP40.08E | 9 618 |
| 930 | 900 | 21AL.3PP40.09E | 7 241 | 21AL.4PP40.09E | 8 788 | 21AL.5PP40.09E | 10 333 |
| 1030 | 1000 | 21AL.3PP40.10E | 7 670 | 21AL.4PP40.10E | 9 360 | 21AL.5PP40.10E | 11 048 |
| 1130 | 1100 | 21AL.3PP40.11E | 8 098 | 21AL.4PP40.11E | 9 931 | 21AL.5PP40.11E | 11 762 |
| 1230 | 1200 | 21AL.3PP40.12E | 8 527 | 21AL.4PP40.12E | 10 503 | 21AL.5PP40.12E | 12 477 |
| 1330 | 1300 | 21AL.3PP40.13E | 8 956 | 21AL.4PP40.13E | 11 075 | 21AL.5PP40.13E | 13 191 |
| 1430 | 1400 | 21AL.3PP40.14E | 9 385 | 21AL.4PP40.14E | 11 646 | 21AL.5PP40.14E | 13 906 |
| 1530 | 1500 | 21AL.3PP40.15E | 9 813 | 21AL.4PP40.15E | 12 218 | 21AL.5PP40.15E | 14 621 |
| 1630 | 1600 | 21AL.3PP40.16E | 10 242 | 21AL.4PP40.16E | 12 790 | 21AL.5PP40.16E | 15 335 |
| 1730 | 1700 | 21AL.3PP40.17E | 10 671 | 21AL.4PP40.17E | 13 361 | 21AL.5PP40.17E | 16 050 |
| 1830 | 1800 | 21AL.3PP40.18E | 11 100 | 21AL.4PP40.18E | 13 933 | 21AL.5PP40.18E | 16 764 |
| Угловая секция Corner section / Elemento angolare | | | | | | | |
| 630 | 600 | 21AL.3PP40.06C | 5 955 | 21AL.4PP40.06C | 7 074 | 21AL.5PP40.06C | 8 189 |
| 730 | 700 | 21AL.3PP40.07C | 6 383 | 21AL.4PP40.07C | 7 646 | 21AL.5PP40.07C | 8 904 |
| 830 | 800 | 21AL.3PP40.08C | 6 812 | 21AL.4PP40.08C | 8 218 | 21AL.5PP40.08C | 9 618 |
| 930 | 900 | 21AL.3PP40.09C | 7 241 | 21AL.4PP40.09C | 8 788 | 21AL.5PP40.09C | 10 333 |
| 1030 | 1000 | 21AL.3PP40.10C | 7 670 | 21AL.4PP40.10C | 9 360 | 21AL.5PP40.10C | 11 048 |
| 1130 | 1100 | 21AL.3PP40.11C | 8 098 | 21AL.4PP40.11C | 9 931 | 21AL.5PP40.11C | 11 762 |
| 1230 | 1200 | 21AL.3PP40.12C | 8 527 | 21AL.4PP40.12C | 10 503 | 21AL.5PP40.12C | 12 477 |
| 1330 | 1300 | 21AL.3PP40.13C | 8 956 | 21AL.4PP40.13C | 11 075 | 21AL.5PP40.13C | 13 191 |
| 1430 | 1400 | 21AL.3PP40.14C | 9 385 | 21AL.4PP40.14C | 11 646 | 21AL.5PP40.14C | 13 906 |
| 1530 | 1500 | 21AL.3PP40.15C | 9 813 | 21AL.4PP40.15C | 12 218 | 21AL.5PP40.15C | 14 621 |
| 1630 | 1600 | 21AL.3PP40.16C | 10 242 | 21AL.4PP40.16C | 12 790 | 21AL.5PP40.16C | 15 335 |
| 1730 | 1700 | 21AL.3PP40.17C | 10 671 | 21AL.4PP40.17C | 13 361 | 21AL.5PP40.17C | 16 050 |
| 1830 | 1800 | 21AL.3PP40.18C | 11 100 | 21AL.4PP40.18C | 13 933 | 21AL.5PP40.18C | 16 764 |

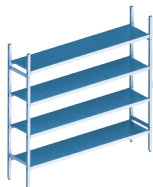
H. 2100
D. 500

| Общая длина, мм Total length, mm Lunghezza totale, mm | Длина полки, мм Shelf length, mm Lunghezza ripiano, mm | Цена, руб. / Price, rubles / Prezzo, rubli | | | | | |
|--|---|--|---------------|-------------------------------|---------------|--------------------------------|---------------|
| | | 3 яруса / 3 tiers / 3 livelli | | 4 яруса / 4 tiers / 4 livelli | | 5 ярусов / 5 tiers / 5 livelli | |
| Базовая секция Basic section / Elemento base | | | | | | | |
| 660 | 600 | 21AL.3PP50.06B | 8 444 | 21AL.4PP50.06B | 9 656 | 21AL.5PP50.06B | 10 869 |
| 760 | 700 | 21AL.3PP50.07B | 8 920 | 21AL.4PP50.07B | 10 291 | 21AL.5PP50.07B | 11 662 |
| 860 | 800 | 21AL.3PP50.08B | 9 395 | 21AL.4PP50.08B | 10 925 | 21AL.5PP50.08B | 12 455 |
| 960 | 900 | 21AL.3PP50.09B | 9 871 | 21AL.4PP50.09B | 11 559 | 21AL.5PP50.09B | 13 248 |
| 1060 | 1000 | 21AL.3PP50.10B | 10 347 | 21AL.4PP50.10B | 12 194 | 21AL.5PP50.10B | 14 041 |
| 1160 | 1100 | 21AL.3PP50.11B | 10 823 | 21AL.4PP50.11B | 12 828 | 21AL.5PP50.11B | 14 834 |
| 1260 | 1200 | 21AL.3PP50.12B | 11 299 | 21AL.4PP50.12B | 13 463 | 21AL.5PP50.12B | 15 627 |
| 1360 | 1300 | 21AL.3PP50.13B | 11 774 | 21AL.4PP50.13B | 14 097 | 21AL.5PP50.13B | 16 420 |
| 1460 | 1400 | 21AL.3PP50.14B | 12 250 | 21AL.4PP50.14B | 14 731 | 21AL.5PP50.14B | 17 213 |
| 1560 | 1500 | 21AL.3PP50.15B | 12 726 | 21AL.4PP50.15B | 15 366 | 21AL.5PP50.15B | 18 006 |
| 1660 | 1600 | 21AL.3PP50.16B | 13 202 | 21AL.4PP50.16B | 16 000 | 21AL.5PP50.16B | 18 799 |
| 1760 | 1700 | 21AL.3PP50.17B | 13 678 | 21AL.4PP50.17B | 16 635 | 21AL.5PP50.17B | 19 592 |
| 1860 | 1800 | 21AL.3PP50.18B | 14 153 | 21AL.4PP50.18B | 17 269 | 21AL.5PP50.18B | 20 385 |
| Дополнительная линейная секция Additional line section / Elemento lineare aggiuntivo | | | | | | | |
| 630 | 600 | 21AL.3PP50.06E | 6 324 | 21AL.4PP50.06E | 7 537 | 21AL.5PP50.06E | 8 749 |
| 730 | 700 | 21AL.3PP50.07E | 6 800 | 21AL.4PP50.07E | 8 171 | 21AL.5PP50.07E | 9 542 |
| 830 | 800 | 21AL.3PP50.08E | 7 276 | 21AL.4PP50.08E | 8 806 | 21AL.5PP50.08E | 10 335 |
| 930 | 900 | 21AL.3PP50.09E | 7 752 | 21AL.4PP50.09E | 9 440 | 21AL.5PP50.09E | 11 128 |
| 1030 | 1000 | 21AL.3PP50.10E | 8 227 | 21AL.4PP50.10E | 10 074 | 21AL.5PP50.10E | 11 921 |
| 1130 | 1100 | 21AL.3PP50.11E | 8 703 | 21AL.4PP50.11E | 10 709 | 21AL.5PP50.11E | 12 714 |
| 1230 | 1200 | 21AL.3PP50.12E | 9 179 | 21AL.4PP50.12E | 11 343 | 21AL.5PP50.12E | 13 507 |
| 1330 | 1300 | 21AL.3PP50.13E | 9 655 | 21AL.4PP50.13E | 11 977 | 21AL.5PP50.13E | 14 300 |
| 1430 | 1400 | 21AL.3PP50.14E | 10 131 | 21AL.4PP50.14E | 12 612 | 21AL.5PP50.14E | 15 093 |
| 1530 | 1500 | 21AL.3PP50.15E | 10 606 | 21AL.4PP50.15E | 13 246 | 21AL.5PP50.15E | 15 886 |
| 1630 | 1600 | 21AL.3PP50.16E | 11 082 | 21AL.4PP50.16E | 13 881 | 21AL.5PP50.16E | 16 679 |
| 1730 | 1700 | 21AL.3PP50.17E | 11 558 | 21AL.4PP50.17E | 14 515 | 21AL.5PP50.17E | 17 472 |
| 1830 | 1800 | 21AL.3PP50.18E | 12 034 | 21AL.4PP50.18E | 15 149 | 21AL.5PP50.18E | 18 265 |
| Угловая секция Corner section / Elemento angolare | | | | | | | |
| 630 | 600 | 21AL.3PP50.06C | 6 324 | 21AL.4PP50.06C | 7 537 | 21AL.5PP50.06C | 8 749 |
| 730 | 700 | 21AL.3PP50.07C | 6 800 | 21AL.4PP50.07C | 8 171 | 21AL.5PP50.07C | 9 542 |
| 830 | 800 | 21AL.3PP50.08C | 7 276 | 21AL.4PP50.08C | 8 806 | 21AL.5PP50.08C | 10 335 |
| 930 | 900 | 21AL.3PP50.09C | 7 752 | 21AL.4PP50.09C | 9 440 | 21AL.5PP50.09C | 11 128 |
| 1030 | 1000 | 21AL.3PP50.10C | 8 227 | 21AL.4PP50.10C | 10 074 | 21AL.5PP50.10C | 11 921 |
| 1130 | 1100 | 21AL.3PP50.11C | 8 703 | 21AL.4PP50.11C | 10 709 | 21AL.5PP50.11C | 12 714 |
| 1230 | 1200 | 21AL.3PP50.12C | 9 179 | 21AL.4PP50.12C | 11 343 | 21AL.5PP50.12C | 13 507 |
| 1330 | 1300 | 21AL.3PP50.13C | 9 655 | 21AL.4PP50.13C | 11 977 | 21AL.5PP50.13C | 14 300 |
| 1430 | 1400 | 21AL.3PP50.14C | 10 131 | 21AL.4PP50.14C | 12 612 | 21AL.5PP50.14C | 15 093 |
| 1530 | 1500 | 21AL.3PP50.15C | 10 606 | 21AL.4PP50.15C | 13 246 | 21AL.5PP50.15C | 15 886 |
| 1630 | 1600 | 21AL.3PP50.16C | 11 082 | 21AL.4PP50.16C | 13 881 | 21AL.5PP50.16C | 16 679 |
| 1730 | 1700 | 21AL.3PP50.17C | 11 558 | 21AL.4PP50.17C | 14 515 | 21AL.5PP50.17C | 17 472 |
| 1830 | 1800 | 21AL.3PP50.18C | 12 034 | 21AL.4PP50.18C | 15 149 | 21AL.5PP50.18C | 18 265 |

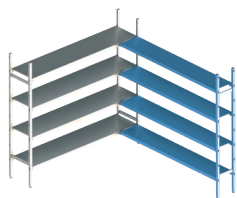
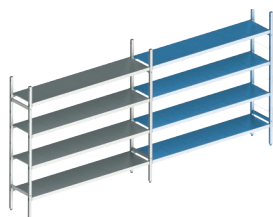
**H. 1600
D. 300**



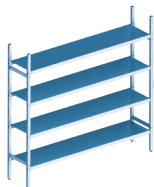
| Общая длина, мм Total length, mm Lunghezza totale, mm | Длина полки, мм Shelf length, mm Lunghezza ripiano, mm | Цена, руб. / Price, rubles / Prezzo, rubli | | | | | |
|--|---|--|---------------|-------------------------------|---------------|--------------------------------|---------------|
| | | 3 яруса / 3 tiers / 3 livelli | | 4 яруса / 4 tiers / 4 livelli | | 5 ярусов / 5 tiers / 5 livelli | |
| Базовая секция Basic section / Elemento base | | | | | | | |
| 660 | 600 | 16AL.3IN30.06B | 8 707 | 16AL.4IN30.06B | 10 386 | 16AL.5IN30.06B | 12 065 |
| 760 | 700 | 16AL.3IN30.07B | 9 313 | 16AL.4IN30.07B | 11 194 | 16AL.5IN30.07B | 13 075 |
| 860 | 800 | 16AL.3IN30.08B | 9 887 | 16AL.4IN30.08B | 11 959 | 16AL.5IN30.08B | 14 031 |
| 960 | 900 | 16AL.3IN30.09B | 10 772 | 16AL.4IN30.09B | 13 140 | 16AL.5IN30.09B | 15 507 |
| 1060 | 1000 | 16AL.3IN30.10B | 11 378 | 16AL.4IN30.10B | 13 947 | 16AL.5IN30.10B | 16 517 |
| 1160 | 1100 | 16AL.3IN30.11B | 11 971 | 16AL.4IN30.11B | 14 738 | 16AL.5IN30.11B | 17 505 |
| 1260 | 1200 | 16AL.3IN30.12B | 12 589 | 16AL.4IN30.12B | 15 562 | 16AL.5IN30.12B | 18 535 |
| 1360 | 1300 | 16AL.3IN30.13B | 13 443 | 16AL.4IN30.13B | 16 701 | 16AL.5IN30.13B | 19 958 |
| 1460 | 1400 | 16AL.3IN30.14B | 14 049 | 16AL.4IN30.14B | 17 508 | 16AL.5IN30.14B | 20 968 |
| 1560 | 1500 | 16AL.3IN30.15B | 14 654 | 16AL.4IN30.15B | 18 316 | 16AL.5IN30.15B | 21 977 |
| 1660 | 1600 | 16AL.3IN30.16B | 15 260 | 16AL.4IN30.16B | 19 123 | 16AL.5IN30.16B | 22 986 |
| 1760 | 1700 | 16AL.3IN30.17B | 16 114 | 16AL.4IN30.17B | 20 262 | 16AL.5IN30.17B | 24 410 |
| 1860 | 1800 | 16AL.3IN30.18B | 16 719 | 16AL.4IN30.18B | 21 069 | 16AL.5IN30.18B | 25 419 |
| Дополнительная линейная секция Additional line section / Elemento lineare aggiuntivo | | | | | | | |
| 630 | 600 | 16AL.3IN30.06E | 6 872 | 16AL.4IN30.06E | 8 551 | 16AL.5IN30.06E | 10 230 |
| 730 | 700 | 16AL.3IN30.07E | 7 478 | 16AL.4IN30.07E | 9 359 | 16AL.5IN30.07E | 11 240 |
| 830 | 800 | 16AL.3IN30.08E | 8 052 | 16AL.4IN30.08E | 10 124 | 16AL.5IN30.08E | 12 196 |
| 930 | 900 | 16AL.3IN30.09E | 8 937 | 16AL.4IN30.09E | 11 305 | 16AL.5IN30.09E | 13 672 |
| 1030 | 1000 | 16AL.3IN30.10E | 9 543 | 16AL.4IN30.10E | 12 112 | 16AL.5IN30.10E | 14 682 |
| 1130 | 1100 | 16AL.3IN30.11E | 10 136 | 16AL.4IN30.11E | 12 903 | 16AL.5IN30.11E | 15 670 |
| 1230 | 1200 | 16AL.3IN30.12E | 10 754 | 16AL.4IN30.12E | 13 727 | 16AL.5IN30.12E | 16 700 |
| 1330 | 1300 | 16AL.3IN30.13E | 11 608 | 16AL.4IN30.13E | 14 866 | 16AL.5IN30.13E | 18 123 |
| 1430 | 1400 | 16AL.3IN30.14E | 12 214 | 16AL.4IN30.14E | 15 673 | 16AL.5IN30.14E | 19 133 |
| 1530 | 1500 | 16AL.3IN30.15E | 12 819 | 16AL.4IN30.15E | 16 481 | 16AL.5IN30.15E | 20 142 |
| 1630 | 1600 | 16AL.3IN30.16E | 13 425 | 16AL.4IN30.16E | 17 288 | 16AL.5IN30.16E | 21 151 |
| 1730 | 1700 | 16AL.3IN30.17E | 14 279 | 16AL.4IN30.17E | 18 427 | 16AL.5IN30.17E | 22 575 |
| 1830 | 1800 | 16AL.3IN30.18E | 14 884 | 16AL.4IN30.18E | 19 234 | 16AL.5IN30.18E | 23 584 |
| Угловая секция Corner section / Elemento angolare | | | | | | | |
| 630 | 600 | 16AL.3IN30.06C | 6 872 | 16AL.4IN30.06C | 8 551 | 16AL.5IN30.06C | 10 230 |
| 730 | 700 | 16AL.3IN30.07C | 7 478 | 16AL.4IN30.07C | 9 359 | 16AL.5IN30.07C | 11 240 |
| 830 | 800 | 16AL.3IN30.08C | 8 052 | 16AL.4IN30.08C | 10 124 | 16AL.5IN30.08C | 12 196 |
| 930 | 900 | 16AL.3IN30.09C | 8 937 | 16AL.4IN30.09C | 11 305 | 16AL.5IN30.09C | 13 672 |
| 1030 | 1000 | 16AL.3IN30.10C | 9 543 | 16AL.4IN30.10C | 12 112 | 16AL.5IN30.10C | 14 682 |
| 1130 | 1100 | 16AL.3IN30.11C | 10 136 | 16AL.4IN30.11C | 12 903 | 16AL.5IN30.11C | 15 670 |
| 1230 | 1200 | 16AL.3IN30.12C | 10 754 | 16AL.4IN30.12C | 13 727 | 16AL.5IN30.12C | 16 700 |
| 1330 | 1300 | 16AL.3IN30.13C | 11 608 | 16AL.4IN30.13C | 14 866 | 16AL.5IN30.13C | 18 123 |
| 1430 | 1400 | 16AL.3IN30.14C | 12 214 | 16AL.4IN30.14C | 15 673 | 16AL.5IN30.14C | 19 133 |
| 1530 | 1500 | 16AL.3IN30.15C | 12 819 | 16AL.4IN30.15C | 16 481 | 16AL.5IN30.15C | 20 142 |
| 1630 | 1600 | 16AL.3IN30.16C | 13 425 | 16AL.4IN30.16C | 17 288 | 16AL.5IN30.16C | 21 151 |
| 1730 | 1700 | 16AL.3IN30.17C | 14 279 | 16AL.4IN30.17C | 18 427 | 16AL.5IN30.17C | 22 575 |
| 1830 | 1800 | 16AL.3IN30.18C | 14 884 | 16AL.4IN30.18C | 19 234 | 16AL.5IN30.18C | 23 584 |

H. 1600
D. 400

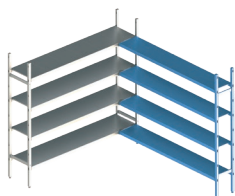
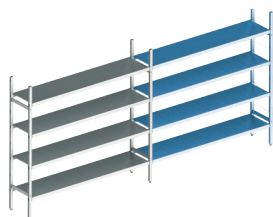
| Общая длина, мм Total length, mm Lunghezza totale, mm | Длина полки, мм Shelf length, mm Lunghezza ripiano, mm | Цена, руб. / Price, rubles / Prezzo, rubli | | | | | |
|--|---|--|---------------|-------------------------------|---------------|--------------------------------|---------------|
| | | 3 яруса / 3 tiers / 3 livelli | | 4 яруса / 4 tiers / 4 livelli | | 5 ярусов / 5 tiers / 5 livelli | |
| Базовая секция Basic section / Elemento base | | | | | | | |
| 660 | 600 | 16AL.3IN40.06B | 9 664 | 16AL.4IN40.06B | 11 578 | 16AL.5IN40.06B | 13 492 |
| 760 | 700 | 16AL.3IN40.07B | 10 328 | 16AL.4IN40.07B | 12 464 | 16AL.5IN40.07B | 14 599 |
| 860 | 800 | 16AL.3IN40.08B | 10 993 | 16AL.4IN40.08B | 13 350 | 16AL.5IN40.08B | 15 706 |
| 960 | 900 | 16AL.3IN40.09B | 12 082 | 16AL.4IN40.09B | 14 802 | 16AL.5IN40.09B | 17 522 |
| 1060 | 1000 | 16AL.3IN40.10B | 12 746 | 16AL.4IN40.10B | 15 687 | 16AL.5IN40.10B | 18 629 |
| 1160 | 1100 | 16AL.3IN40.11B | 13 410 | 16AL.4IN40.11B | 16 573 | 16AL.5IN40.11B | 19 736 |
| 1260 | 1200 | 16AL.3IN40.12B | 14 075 | 16AL.4IN40.12B | 17 459 | 16AL.5IN40.12B | 20 843 |
| 1360 | 1300 | 16AL.3IN40.13B | 15 164 | 16AL.4IN40.13B | 18 911 | 16AL.5IN40.13B | 22 658 |
| 1460 | 1400 | 16AL.3IN40.14B | 15 828 | 16AL.4IN40.14B | 19 797 | 16AL.5IN40.14B | 23 765 |
| 1560 | 1500 | 16AL.3IN40.15B | 16 492 | 16AL.4IN40.15B | 20 682 | 16AL.5IN40.15B | 24 872 |
| 1660 | 1600 | 16AL.3IN40.16B | 17 157 | 16AL.4IN40.16B | 21 568 | 16AL.5IN40.16B | 25 980 |
| 1760 | 1700 | 16AL.3IN40.17B | 18 246 | 16AL.4IN40.17B | 23 020 | 16AL.5IN40.17B | 27 795 |
| 1860 | 1800 | 16AL.3IN40.18B | 18 910 | 16AL.4IN40.18B | 23 906 | 16AL.5IN40.18B | 28 902 |
| Дополнительная линейная секция Additional line section / Elemento lineare aggiuntivo | | | | | | | |
| 630 | 600 | 16AL.3IN40.06E | 7 703 | 16AL.4IN40.06E | 9 617 | 16AL.5IN40.06E | 11 531 |
| 730 | 700 | 16AL.3IN40.07E | 8 367 | 16AL.4IN40.07E | 10 503 | 16AL.5IN40.07E | 12 638 |
| 830 | 800 | 16AL.3IN40.08E | 9 032 | 16AL.4IN40.08E | 11 389 | 16AL.5IN40.08E | 13 745 |
| 930 | 900 | 16AL.3IN40.09E | 10 121 | 16AL.4IN40.09E | 12 841 | 16AL.5IN40.09E | 15 561 |
| 1030 | 1000 | 16AL.3IN40.10E | 10 785 | 16AL.4IN40.10E | 13 726 | 16AL.5IN40.10E | 16 668 |
| 1130 | 1100 | 16AL.3IN40.11E | 11 449 | 16AL.4IN40.11E | 14 612 | 16AL.5IN40.11E | 17 775 |
| 1230 | 1200 | 16AL.3IN40.12E | 12 114 | 16AL.4IN40.12E | 15 498 | 16AL.5IN40.12E | 18 882 |
| 1330 | 1300 | 16AL.3IN40.13E | 13 203 | 16AL.4IN40.13E | 16 950 | 16AL.5IN40.13E | 20 697 |
| 1430 | 1400 | 16AL.3IN40.14E | 13 867 | 16AL.4IN40.14E | 17 836 | 16AL.5IN40.14E | 21 804 |
| 1530 | 1500 | 16AL.3IN40.15E | 14 531 | 16AL.4IN40.15E | 18 721 | 16AL.5IN40.15E | 22 911 |
| 1630 | 1600 | 16AL.3IN40.16E | 15 196 | 16AL.4IN40.16E | 19 607 | 16AL.5IN40.16E | 24 019 |
| 1730 | 1700 | 16AL.3IN40.17E | 16 285 | 16AL.4IN40.17E | 21 059 | 16AL.5IN40.17E | 25 834 |
| 1830 | 1800 | 16AL.3IN40.18E | 16 949 | 16AL.4IN40.18E | 21 945 | 16AL.5IN40.18E | 26 941 |
| Угловая секция Corner section / Elemento angolare | | | | | | | |
| 630 | 600 | 16AL.3IN40.06C | 7 703 | 16AL.4IN40.06C | 9 617 | 16AL.5IN40.06C | 11 531 |
| 730 | 700 | 16AL.3IN40.07C | 8 367 | 16AL.4IN40.07C | 10 503 | 16AL.5IN40.07C | 12 638 |
| 830 | 800 | 16AL.3IN40.08C | 9 032 | 16AL.4IN40.08C | 11 389 | 16AL.5IN40.08C | 13 745 |
| 930 | 900 | 16AL.3IN40.09C | 10 121 | 16AL.4IN40.09C | 12 841 | 16AL.5IN40.09C | 15 561 |
| 1030 | 1000 | 16AL.3IN40.10C | 10 785 | 16AL.4IN40.10C | 13 726 | 16AL.5IN40.10C | 16 668 |
| 1130 | 1100 | 16AL.3IN40.11C | 11 449 | 16AL.4IN40.11C | 14 612 | 16AL.5IN40.11C | 17 775 |
| 1230 | 1200 | 16AL.3IN40.12C | 12 114 | 16AL.4IN40.12C | 15 498 | 16AL.5IN40.12C | 18 882 |
| 1330 | 1300 | 16AL.3IN40.13C | 13 203 | 16AL.4IN40.13C | 16 950 | 16AL.5IN40.13C | 20 697 |
| 1430 | 1400 | 16AL.3IN40.14C | 13 867 | 16AL.4IN40.14C | 17 836 | 16AL.5IN40.14C | 21 804 |
| 1530 | 1500 | 16AL.3IN40.15C | 14 531 | 16AL.4IN40.15C | 18 721 | 16AL.5IN40.15C | 22 911 |
| 1630 | 1600 | 16AL.3IN40.16C | 15 196 | 16AL.4IN40.16C | 19 607 | 16AL.5IN40.16C | 24 019 |
| 1730 | 1700 | 16AL.3IN40.17C | 16 285 | 16AL.4IN40.17C | 21 059 | 16AL.5IN40.17C | 25 834 |
| 1830 | 1800 | 16AL.3IN40.18C | 16 949 | 16AL.4IN40.18C | 21 945 | 16AL.5IN40.18C | 26 941 |

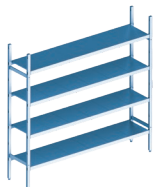


H. 1600
D. 500

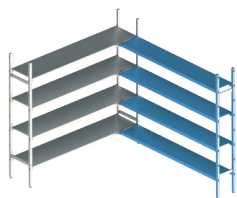
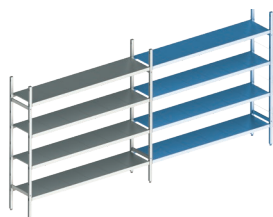


| Общая длина, мм Total length, mm Lunghezza totale, mm | Длина полки, мм Shelf length, mm Lunghezza ripiano, mm | Цена, руб. / Price, rubles / Prezzo, rubli | | | | | |
|--|---|--|---------------|-------------------------------|---------------|--------------------------------|---------------|
| | | 3 яруса / 3 tiers / 3 livelli | | 4 яруса / 4 tiers / 4 livelli | | 5 ярусов / 5 tiers / 5 livelli | |
| Базовая секция Basic section / Elemento base | | | | | | | |
| 660 | 600 | 16AL.3IN50.06B | 10 638 | 16AL.4IN50.06B | 12 793 | 16AL.5IN50.06B | 14 949 |
| 760 | 700 | 16AL.3IN50.07B | 11 489 | 16AL.4IN50.07B | 13 927 | 16AL.5IN50.07B | 16 366 |
| 860 | 800 | 16AL.3IN50.08B | 12 339 | 16AL.4IN50.08B | 15 061 | 16AL.5IN50.08B | 17 784 |
| 960 | 900 | 16AL.3IN50.09B | 13 418 | 16AL.4IN50.09B | 16 500 | 16AL.5IN50.09B | 19 581 |
| 1060 | 1000 | 16AL.3IN50.10B | 14 268 | 16AL.4IN50.10B | 17 634 | 16AL.5IN50.10B | 20 999 |
| 1160 | 1100 | 16AL.3IN50.11B | 15 119 | 16AL.4IN50.11B | 18 768 | 16AL.5IN50.11B | 22 417 |
| 1260 | 1200 | 16AL.3IN50.12B | 15 969 | 16AL.4IN50.12B | 19 902 | 16AL.5IN50.12B | 23 834 |
| 1360 | 1300 | 16AL.3IN50.13B | 17 048 | 16AL.4IN50.13B | 21 340 | 16AL.5IN50.13B | 25 632 |
| 1460 | 1400 | 16AL.3IN50.14B | 17 898 | 16AL.4IN50.14B | 22 474 | 16AL.5IN50.14B | 27 049 |
| 1560 | 1500 | 16AL.3IN50.15B | 18 749 | 16AL.4IN50.15B | 23 608 | 16AL.5IN50.15B | 28 467 |
| 1660 | 1600 | 16AL.3IN50.16B | 19 599 | 16AL.4IN50.16B | 24 742 | 16AL.5IN50.16B | 29 884 |
| 1760 | 1700 | 16AL.3IN50.17B | 20 678 | 16AL.4IN50.17B | 26 180 | 16AL.5IN50.17B | 31 682 |
| 1860 | 1800 | 16AL.3IN50.18B | 21 528 | 16AL.4IN50.18B | 27 314 | 16AL.5IN50.18B | 33 099 |
| Дополнительная линейная секция Additional line section / Elemento lineare aggiuntivo | | | | | | | |
| 630 | 600 | 16AL.3IN50.06E | 8 552 | 16AL.4IN50.06E | 10 707 | 16AL.5IN50.06E | 12 863 |
| 730 | 700 | 16AL.3IN50.07E | 9 403 | 16AL.4IN50.07E | 11 841 | 16AL.5IN50.07E | 14 280 |
| 830 | 800 | 16AL.3IN50.08E | 10 253 | 16AL.4IN50.08E | 12 975 | 16AL.5IN50.08E | 15 698 |
| 930 | 900 | 16AL.3IN50.09E | 11 332 | 16AL.4IN50.09E | 14 414 | 16AL.5IN50.09E | 17 495 |
| 1030 | 1000 | 16AL.3IN50.10E | 12 182 | 16AL.4IN50.10E | 15 548 | 16AL.5IN50.10E | 18 913 |
| 1130 | 1100 | 16AL.3IN50.11E | 13 033 | 16AL.4IN50.11E | 16 682 | 16AL.5IN50.11E | 20 331 |
| 1230 | 1200 | 16AL.3IN50.12E | 13 883 | 16AL.4IN50.12E | 17 816 | 16AL.5IN50.12E | 21 748 |
| 1330 | 1300 | 16AL.3IN50.13E | 14 962 | 16AL.4IN50.13E | 19 254 | 16AL.5IN50.13E | 23 546 |
| 1430 | 1400 | 16AL.3IN50.14E | 15 812 | 16AL.4IN50.14E | 20 388 | 16AL.5IN50.14E | 24 963 |
| 1530 | 1500 | 16AL.3IN50.15E | 16 663 | 16AL.4IN50.15E | 21 522 | 16AL.5IN50.15E | 26 381 |
| 1630 | 1600 | 16AL.3IN50.16E | 17 513 | 16AL.4IN50.16E | 22 656 | 16AL.5IN50.16E | 27 798 |
| 1730 | 1700 | 16AL.3IN50.17E | 18 592 | 16AL.4IN50.17E | 24 094 | 16AL.5IN50.17E | 29 596 |
| 1830 | 1800 | 16AL.3IN50.18E | 19 442 | 16AL.4IN50.18E | 25 228 | 16AL.5IN50.18E | 31 013 |
| Угловая секция Corner section / Elemento angolare | | | | | | | |
| 630 | 600 | 16AL.3IN50.06C | 8 552 | 16AL.4IN50.06C | 10 707 | 16AL.5IN50.06C | 12 863 |
| 730 | 700 | 16AL.3IN50.07C | 9 403 | 16AL.4IN50.07C | 11 841 | 16AL.5IN50.07C | 14 280 |
| 830 | 800 | 16AL.3IN50.08C | 10 253 | 16AL.4IN50.08C | 12 975 | 16AL.5IN50.08C | 15 698 |
| 930 | 900 | 16AL.3IN50.09C | 11 332 | 16AL.4IN50.09C | 14 414 | 16AL.5IN50.09C | 17 495 |
| 1030 | 1000 | 16AL.3IN50.10C | 12 182 | 16AL.4IN50.10C | 15 548 | 16AL.5IN50.10C | 18 913 |
| 1130 | 1100 | 16AL.3IN50.11C | 13 033 | 16AL.4IN50.11C | 16 682 | 16AL.5IN50.11C | 20 331 |
| 1230 | 1200 | 16AL.3IN50.12C | 13 883 | 16AL.4IN50.12C | 17 816 | 16AL.5IN50.12C | 21 748 |
| 1330 | 1300 | 16AL.3IN50.13C | 14 962 | 16AL.4IN50.13C | 19 254 | 16AL.5IN50.13C | 23 546 |
| 1430 | 1400 | 16AL.3IN50.14C | 15 812 | 16AL.4IN50.14C | 20 388 | 16AL.5IN50.14C | 24 963 |
| 1530 | 1500 | 16AL.3IN50.15C | 16 663 | 16AL.4IN50.15C | 21 522 | 16AL.5IN50.15C | 26 381 |
| 1630 | 1600 | 16AL.3IN50.16C | 17 513 | 16AL.4IN50.16C | 22 656 | 16AL.5IN50.16C | 27 798 |
| 1730 | 1700 | 16AL.3IN50.17C | 18 592 | 16AL.4IN50.17C | 24 094 | 16AL.5IN50.17C | 29 596 |
| 1830 | 1800 | 16AL.3IN50.18C | 19 442 | 16AL.4IN50.18C | 25 228 | 16AL.5IN50.18C | 31 013 |

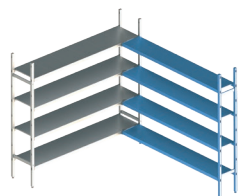
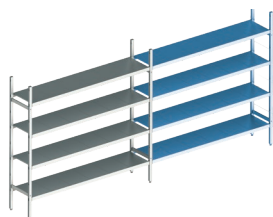
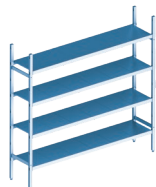


H. 1800
D. 300

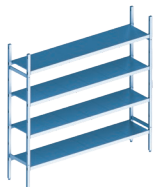
| Общая длина, мм Total length, mm Lunghezza totale, mm | Длина полки, мм Shelf length, mm Lunghezza ripiano, mm | Цена, руб. / Price, rubles / Prezzo, rubli | | | | | |
|--|---|--|---------------|-------------------------------|---------------|--------------------------------|---------------|
| | | 3 яруса / 3 tiers / 3 livelli | | 4 яруса / 4 tiers / 4 livelli | | 5 ярусов / 5 tiers / 5 livelli | |
| Базовая секция Basic section / Elemento base | | | | | | | |
| 660 | 600 | 18AL.3IN30.06B | 9 071 | 18AL.4IN30.06B | 10 750 | 18AL.5IN30.06B | 12 429 |
| 760 | 700 | 18AL.3IN30.07B | 9 677 | 18AL.4IN30.07B | 11 558 | 18AL.5IN30.07B | 13 439 |
| 860 | 800 | 18AL.3IN30.08B | 10 251 | 18AL.4IN30.08B | 12 323 | 18AL.5IN30.08B | 14 395 |
| 960 | 900 | 18AL.3IN30.09B | 11 136 | 18AL.4IN30.09B | 13 504 | 18AL.5IN30.09B | 15 871 |
| 1060 | 1000 | 18AL.3IN30.10B | 11 742 | 18AL.4IN30.10B | 14 311 | 18AL.5IN30.10B | 16 881 |
| 1160 | 1100 | 18AL.3IN30.11B | 12 335 | 18AL.4IN30.11B | 15 102 | 18AL.5IN30.11B | 17 869 |
| 1260 | 1200 | 18AL.3IN30.12B | 12 953 | 18AL.4IN30.12B | 15 926 | 18AL.5IN30.12B | 18 899 |
| 1360 | 1300 | 18AL.3IN30.13B | 13 807 | 18AL.4IN30.13B | 17 065 | 18AL.5IN30.13B | 20 322 |
| 1460 | 1400 | 18AL.3IN30.14B | 14 413 | 18AL.4IN30.14B | 17 872 | 18AL.5IN30.14B | 21 332 |
| 1560 | 1500 | 18AL.3IN30.15B | 15 018 | 18AL.4IN30.15B | 18 680 | 18AL.5IN30.15B | 22 341 |
| 1660 | 1600 | 18AL.3IN30.16B | 15 624 | 18AL.4IN30.16B | 19 487 | 18AL.5IN30.16B | 23 350 |
| 1760 | 1700 | 18AL.3IN30.17B | 16 478 | 18AL.4IN30.17B | 20 626 | 18AL.5IN30.17B | 24 774 |
| 1860 | 1800 | 18AL.3IN30.18B | 17 083 | 18AL.4IN30.18B | 21 433 | 18AL.5IN30.18B | 25 783 |
| Дополнительная линейная секция Additional line section / Elemento lineare aggiuntivo | | | | | | | |
| 630 | 600 | 18AL.3IN30.06E | 7 054 | 18AL.4IN30.06E | 8 733 | 18AL.5IN30.06E | 10 412 |
| 730 | 700 | 18AL.3IN30.07E | 7 660 | 18AL.4IN30.07E | 9 541 | 18AL.5IN30.07E | 11 422 |
| 830 | 800 | 18AL.3IN30.08E | 8 234 | 18AL.4IN30.08E | 10 306 | 18AL.5IN30.08E | 12 378 |
| 930 | 900 | 18AL.3IN30.09E | 9 119 | 18AL.4IN30.09E | 11 487 | 18AL.5IN30.09E | 13 854 |
| 1030 | 1000 | 18AL.3IN30.10E | 9 725 | 18AL.4IN30.10E | 12 294 | 18AL.5IN30.10E | 14 864 |
| 1130 | 1100 | 18AL.3IN30.11E | 10 318 | 18AL.4IN30.11E | 13 085 | 18AL.5IN30.11E | 15 852 |
| 1230 | 1200 | 18AL.3IN30.12E | 10 936 | 18AL.4IN30.12E | 13 909 | 18AL.5IN30.12E | 16 882 |
| 1330 | 1300 | 18AL.3IN30.13E | 11 790 | 18AL.4IN30.13E | 15 048 | 18AL.5IN30.13E | 18 305 |
| 1430 | 1400 | 18AL.3IN30.14E | 12 396 | 18AL.4IN30.14E | 15 855 | 18AL.5IN30.14E | 19 315 |
| 1530 | 1500 | 18AL.3IN30.15E | 13 001 | 18AL.4IN30.15E | 16 663 | 18AL.5IN30.15E | 20 324 |
| 1630 | 1600 | 18AL.3IN30.16E | 13 607 | 18AL.4IN30.16E | 17 470 | 18AL.5IN30.16E | 21 333 |
| 1730 | 1700 | 18AL.3IN30.17E | 14 461 | 18AL.4IN30.17E | 18 609 | 18AL.5IN30.17E | 22 757 |
| 1830 | 1800 | 18AL.3IN30.18E | 15 066 | 18AL.4IN30.18E | 19 416 | 18AL.5IN30.18E | 23 766 |
| Угловая секция Corner section / Elemento angolare | | | | | | | |
| 630 | 600 | 18AL.3IN30.06C | 7 054 | 18AL.4IN30.06C | 8 733 | 18AL.5IN30.06C | 10 412 |
| 730 | 700 | 18AL.3IN30.07C | 7 660 | 18AL.4IN30.07C | 9 541 | 18AL.5IN30.07C | 11 422 |
| 830 | 800 | 18AL.3IN30.08C | 8 234 | 18AL.4IN30.08C | 10 306 | 18AL.5IN30.08C | 12 378 |
| 930 | 900 | 18AL.3IN30.09C | 9 119 | 18AL.4IN30.09C | 11 487 | 18AL.5IN30.09C | 13 854 |
| 1030 | 1000 | 18AL.3IN30.10C | 9 725 | 18AL.4IN30.10C | 12 294 | 18AL.5IN30.10C | 14 864 |
| 1130 | 1100 | 18AL.3IN30.11C | 10 318 | 18AL.4IN30.11C | 13 085 | 18AL.5IN30.11C | 15 852 |
| 1230 | 1200 | 18AL.3IN30.12C | 10 936 | 18AL.4IN30.12C | 13 909 | 18AL.5IN30.12C | 16 882 |
| 1330 | 1300 | 18AL.3IN30.13C | 11 790 | 18AL.4IN30.13C | 15 048 | 18AL.5IN30.13C | 18 305 |
| 1430 | 1400 | 18AL.3IN30.14C | 12 396 | 18AL.4IN30.14C | 15 855 | 18AL.5IN30.14C | 19 315 |
| 1530 | 1500 | 18AL.3IN30.15C | 13 001 | 18AL.4IN30.15C | 16 663 | 18AL.5IN30.15C | 20 324 |
| 1630 | 1600 | 18AL.3IN30.16C | 13 607 | 18AL.4IN30.16C | 17 470 | 18AL.5IN30.16C | 21 333 |
| 1730 | 1700 | 18AL.3IN30.17C | 14 461 | 18AL.4IN30.17C | 18 609 | 18AL.5IN30.17C | 22 757 |
| 1830 | 1800 | 18AL.3IN30.18C | 15 066 | 18AL.4IN30.18C | 19 416 | 18AL.5IN30.18C | 23 766 |



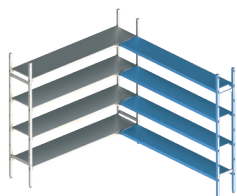
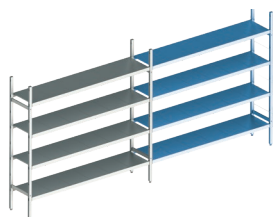
H. 1800
D. 400



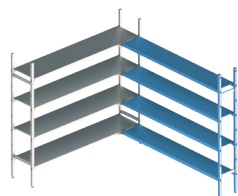
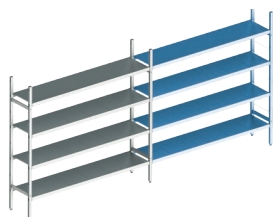
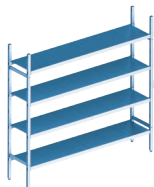
| Общая длина, мм Total length, mm Lunghezza totale, mm | Длина полки, мм Shelf length, mm Lunghezza ripiano, mm | Цена, руб. / Price, rubles / Prezzo, rubli | | | | | |
|--|---|--|---------------|-------------------------------|---------------|--------------------------------|---------------|
| | | 3 яруса / 3 tiers / 3 livelli | | 4 яруса / 4 tiers / 4 livelli | | 5 ярусов / 5 tiers / 5 livelli | |
| Базовая секция Basic section / Elemento base | | | | | | | |
| 660 | 600 | 18AL.3IN40.06B | 10 026 | 18AL.4IN40.06B | 11 940 | 18AL.5IN40.06B | 13 854 |
| 760 | 700 | 18AL.3IN40.07B | 10 690 | 18AL.4IN40.07B | 12 825 | 18AL.5IN40.07B | 14 961 |
| 860 | 800 | 18AL.3IN40.08B | 11 354 | 18AL.4IN40.08B | 13 711 | 18AL.5IN40.08B | 16 068 |
| 960 | 900 | 18AL.3IN40.09B | 12 443 | 18AL.4IN40.09B | 15 163 | 18AL.5IN40.09B | 17 883 |
| 1060 | 1000 | 18AL.3IN40.10B | 13 108 | 18AL.4IN40.10B | 16 049 | 18AL.5IN40.10B | 18 990 |
| 1160 | 1100 | 18AL.3IN40.11B | 13 772 | 18AL.4IN40.11B | 16 935 | 18AL.5IN40.11B | 20 097 |
| 1260 | 1200 | 18AL.3IN40.12B | 14 436 | 18AL.4IN40.12B | 17 820 | 18AL.5IN40.12B | 21 205 |
| 1360 | 1300 | 18AL.3IN40.13B | 15 525 | 18AL.4IN40.13B | 19 273 | 18AL.5IN40.13B | 23 020 |
| 1460 | 1400 | 18AL.3IN40.14B | 16 190 | 18AL.4IN40.14B | 20 158 | 18AL.5IN40.14B | 24 127 |
| 1560 | 1500 | 18AL.3IN40.15B | 16 854 | 18AL.4IN40.15B | 21 044 | 18AL.5IN40.15B | 25 234 |
| 1660 | 1600 | 18AL.3IN40.16B | 17 518 | 18AL.4IN40.16B | 21 930 | 18AL.5IN40.16B | 26 341 |
| 1760 | 1700 | 18AL.3IN40.17B | 18 607 | 18AL.4IN40.17B | 23 382 | 18AL.5IN40.17B | 28 156 |
| 1860 | 1800 | 18AL.3IN40.18B | 19 272 | 18AL.4IN40.18B | 24 267 | 18AL.5IN40.18B | 29 263 |
| Дополнительная линейная секция Additional line section / Elemento lineare aggiuntivo | | | | | | | |
| 630 | 600 | 18AL.3IN40.06E | 7 884 | 18AL.4IN40.06E | 9 798 | 18AL.5IN40.06E | 11 712 |
| 730 | 700 | 18AL.3IN40.07E | 8 548 | 18AL.4IN40.07E | 10 684 | 18AL.5IN40.07E | 12 819 |
| 830 | 800 | 18AL.3IN40.08E | 9 213 | 18AL.4IN40.08E | 11 569 | 18AL.5IN40.08E | 13 926 |
| 930 | 900 | 18AL.3IN40.09E | 10 302 | 18AL.4IN40.09E | 13 021 | 18AL.5IN40.09E | 15 741 |
| 1030 | 1000 | 18AL.3IN40.10E | 10 966 | 18AL.4IN40.10E | 13 907 | 18AL.5IN40.10E | 16 849 |
| 1130 | 1100 | 18AL.3IN40.11E | 11 630 | 18AL.4IN40.11E | 14 793 | 18AL.5IN40.11E | 17 956 |
| 1230 | 1200 | 18AL.3IN40.12E | 12 294 | 18AL.4IN40.12E | 15 679 | 18AL.5IN40.12E | 19 063 |
| 1330 | 1300 | 18AL.3IN40.13E | 13 383 | 18AL.4IN40.13E | 17 131 | 18AL.5IN40.13E | 20 878 |
| 1430 | 1400 | 18AL.3IN40.14E | 14 048 | 18AL.4IN40.14E | 18 016 | 18AL.5IN40.14E | 21 985 |
| 1530 | 1500 | 18AL.3IN40.15E | 14 712 | 18AL.4IN40.15E | 18 902 | 18AL.5IN40.15E | 23 092 |
| 1630 | 1600 | 18AL.3IN40.16E | 15 376 | 18AL.4IN40.16E | 19 788 | 18AL.5IN40.16E | 24 199 |
| 1730 | 1700 | 18AL.3IN40.17E | 16 465 | 18AL.4IN40.17E | 21 240 | 18AL.5IN40.17E | 26 014 |
| 1830 | 1800 | 18AL.3IN40.18E | 17 130 | 18AL.4IN40.18E | 22 126 | 18AL.5IN40.18E | 27 122 |
| Угловая секция Corner section / Elemento angolare | | | | | | | |
| 630 | 600 | 18AL.3IN40.06C | 7 884 | 18AL.4IN40.06C | 9 798 | 18AL.5IN40.06C | 11 712 |
| 730 | 700 | 18AL.3IN40.07C | 8 548 | 18AL.4IN40.07C | 10 684 | 18AL.5IN40.07C | 12 819 |
| 830 | 800 | 18AL.3IN40.08C | 9 213 | 18AL.4IN40.08C | 11 569 | 18AL.5IN40.08C | 13 926 |
| 930 | 900 | 18AL.3IN40.09C | 10 302 | 18AL.4IN40.09C | 13 021 | 18AL.5IN40.09C | 15 741 |
| 1030 | 1000 | 18AL.3IN40.10C | 10 966 | 18AL.4IN40.10C | 13 907 | 18AL.5IN40.10C | 16 849 |
| 1130 | 1100 | 18AL.3IN40.11C | 11 630 | 18AL.4IN40.11C | 14 793 | 18AL.5IN40.11C | 17 956 |
| 1230 | 1200 | 18AL.3IN40.12C | 12 294 | 18AL.4IN40.12C | 15 679 | 18AL.5IN40.12C | 19 063 |
| 1330 | 1300 | 18AL.3IN40.13C | 13 383 | 18AL.4IN40.13C | 17 131 | 18AL.5IN40.13C | 20 878 |
| 1430 | 1400 | 18AL.3IN40.14C | 14 048 | 18AL.4IN40.14C | 18 016 | 18AL.5IN40.14C | 21 985 |
| 1530 | 1500 | 18AL.3IN40.15C | 14 712 | 18AL.4IN40.15C | 18 902 | 18AL.5IN40.15C | 23 092 |
| 1630 | 1600 | 18AL.3IN40.16C | 15 376 | 18AL.4IN40.16C | 19 788 | 18AL.5IN40.16C | 24 199 |
| 1730 | 1700 | 18AL.3IN40.17C | 16 465 | 18AL.4IN40.17C | 21 240 | 18AL.5IN40.17C | 26 014 |
| 1830 | 1800 | 18AL.3IN40.18C | 17 130 | 18AL.4IN40.18C | 22 126 | 18AL.5IN40.18C | 27 122 |

H. 1800
D. 500

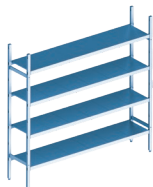
| Общая длина, мм Total length, mm Lunghezza totale, mm | Длина полки, мм Shelf length, mm Lunghezza ripiano, mm | Цена, руб. / Price, rubles / Prezzo, rubli | | | | | |
|--|---|--|---------------|-------------------------------|---------------|--------------------------------|---------------|
| | | 3 яруса / 3 tiers / 3 livelli | | 4 яруса / 4 tiers / 4 livelli | | 5 ярусов / 5 tiers / 5 livelli | |
| Базовая секция Basic section / Elemento base | | | | | | | |
| 660 | 600 | 18AL.3IN50.06B | 11 000 | 18AL.4IN50.06B | 13 155 | 18AL.5IN50.06B | 15 311 |
| 760 | 700 | 18AL.3IN50.07B | 11 851 | 18AL.4IN50.07B | 14 289 | 18AL.5IN50.07B | 16 728 |
| 860 | 800 | 18AL.3IN50.08B | 12 701 | 18AL.4IN50.08B | 15 423 | 18AL.5IN50.08B | 18 146 |
| 960 | 900 | 18AL.3IN50.09B | 13 780 | 18AL.4IN50.09B | 16 862 | 18AL.5IN50.09B | 19 943 |
| 1060 | 1000 | 18AL.3IN50.10B | 14 630 | 18AL.4IN50.10B | 17 996 | 18AL.5IN50.10B | 21 361 |
| 1160 | 1100 | 18AL.3IN50.11B | 15 481 | 18AL.4IN50.11B | 19 130 | 18AL.5IN50.11B | 22 779 |
| 1260 | 1200 | 18AL.3IN50.12B | 16 331 | 18AL.4IN50.12B | 20 264 | 18AL.5IN50.12B | 24 196 |
| 1360 | 1300 | 18AL.3IN50.13B | 17 410 | 18AL.4IN50.13B | 21 702 | 18AL.5IN50.13B | 25 994 |
| 1460 | 1400 | 18AL.3IN50.14B | 18 260 | 18AL.4IN50.14B | 22 836 | 18AL.5IN50.14B | 27 411 |
| 1560 | 1500 | 18AL.3IN50.15B | 19 111 | 18AL.4IN50.15B | 23 970 | 18AL.5IN50.15B | 28 829 |
| 1660 | 1600 | 18AL.3IN50.16B | 19 961 | 18AL.4IN50.16B | 25 104 | 18AL.5IN50.16B | 30 246 |
| 1760 | 1700 | 18AL.3IN50.17B | 21 040 | 18AL.4IN50.17B | 26 542 | 18AL.5IN50.17B | 32 044 |
| 1860 | 1800 | 18AL.3IN50.18B | 21 890 | 18AL.4IN50.18B | 27 676 | 18AL.5IN50.18B | 33 461 |
| Дополнительная линейная секция Additional line section / Elemento lineare aggiuntivo | | | | | | | |
| 630 | 600 | 18AL.3IN50.06E | 8 733 | 18AL.4IN50.06E | 10 888 | 18AL.5IN50.06E | 13 044 |
| 730 | 700 | 18AL.3IN50.07E | 9 584 | 18AL.4IN50.07E | 12 022 | 18AL.5IN50.07E | 14 461 |
| 830 | 800 | 18AL.3IN50.08E | 10 434 | 18AL.4IN50.08E | 13 156 | 18AL.5IN50.08E | 15 879 |
| 930 | 900 | 18AL.3IN50.09E | 11 513 | 18AL.4IN50.09E | 14 595 | 18AL.5IN50.09E | 17 676 |
| 1030 | 1000 | 18AL.3IN50.10E | 12 363 | 18AL.4IN50.10E | 15 729 | 18AL.5IN50.10E | 19 094 |
| 1130 | 1100 | 18AL.3IN50.11E | 13 214 | 18AL.4IN50.11E | 16 863 | 18AL.5IN50.11E | 20 512 |
| 1230 | 1200 | 18AL.3IN50.12E | 14 064 | 18AL.4IN50.12E | 17 997 | 18AL.5IN50.12E | 21 929 |
| 1330 | 1300 | 18AL.3IN50.13E | 15 143 | 18AL.4IN50.13E | 19 435 | 18AL.5IN50.13E | 23 727 |
| 1430 | 1400 | 18AL.3IN50.14E | 15 993 | 18AL.4IN50.14E | 20 569 | 18AL.5IN50.14E | 25 144 |
| 1530 | 1500 | 18AL.3IN50.15E | 16 844 | 18AL.4IN50.15E | 21 703 | 18AL.5IN50.15E | 26 562 |
| 1630 | 1600 | 18AL.3IN50.16E | 17 694 | 18AL.4IN50.16E | 22 837 | 18AL.5IN50.16E | 27 979 |
| 1730 | 1700 | 18AL.3IN50.17E | 18 773 | 18AL.4IN50.17E | 24 275 | 18AL.5IN50.17E | 29 777 |
| 1830 | 1800 | 18AL.3IN50.18E | 19 623 | 18AL.4IN50.18E | 25 409 | 18AL.5IN50.18E | 31 194 |
| Угловая секция Corner section / Elemento angolare | | | | | | | |
| 630 | 600 | 18AL.3IN50.06C | 8 733 | 18AL.4IN50.06C | 10 888 | 18AL.5IN50.06C | 13 044 |
| 730 | 700 | 18AL.3IN50.07C | 9 584 | 18AL.4IN50.07C | 12 022 | 18AL.5IN50.07C | 14 461 |
| 830 | 800 | 18AL.3IN50.08C | 10 434 | 18AL.4IN50.08C | 13 156 | 18AL.5IN50.08C | 15 879 |
| 930 | 900 | 18AL.3IN50.09C | 11 513 | 18AL.4IN50.09C | 14 595 | 18AL.5IN50.09C | 17 676 |
| 1030 | 1000 | 18AL.3IN50.10C | 12 363 | 18AL.4IN50.10C | 15 729 | 18AL.5IN50.10C | 19 094 |
| 1130 | 1100 | 18AL.3IN50.11C | 13 214 | 18AL.4IN50.11C | 16 863 | 18AL.5IN50.11C | 20 512 |
| 1230 | 1200 | 18AL.3IN50.12C | 14 064 | 18AL.4IN50.12C | 17 997 | 18AL.5IN50.12C | 21 929 |
| 1330 | 1300 | 18AL.3IN50.13C | 15 143 | 18AL.4IN50.13C | 19 435 | 18AL.5IN50.13C | 23 727 |
| 1430 | 1400 | 18AL.3IN50.14C | 15 993 | 18AL.4IN50.14C | 20 569 | 18AL.5IN50.14C | 25 144 |
| 1530 | 1500 | 18AL.3IN50.15C | 16 844 | 18AL.4IN50.15C | 21 703 | 18AL.5IN50.15C | 26 562 |
| 1630 | 1600 | 18AL.3IN50.16C | 17 694 | 18AL.4IN50.16C | 22 837 | 18AL.5IN50.16C | 27 979 |
| 1730 | 1700 | 18AL.3IN50.17C | 18 773 | 18AL.4IN50.17C | 24 275 | 18AL.5IN50.17C | 29 777 |
| 1830 | 1800 | 18AL.3IN50.18C | 19 623 | 18AL.4IN50.18C | 25 409 | 18AL.5IN50.18C | 31 194 |



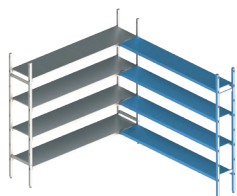
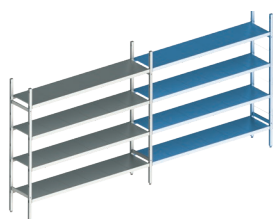
**H. 2100
D. 300**



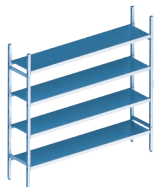
| Общая длина, мм Total length, mm Lunghezza totale, mm | Длина полки, мм Shelf length, mm Lunghezza ripiano, mm | Цена, руб. / Price, rubles / Prezzo, rubli | | | | | |
|--|---|--|---------------|-------------------------------|---------------|--------------------------------|---------------|
| | | 3 яруса / 3 tiers / 3 livelli | | 4 яруса / 4 tiers / 4 livelli | | 5 ярусов / 5 tiers / 5 livelli | |
| Базовая секция Basic section / Elemento base | | | | | | | |
| 660 | 600 | 21AL.3IN30.06B | 9 615 | 21AL.4IN30.06B | 11 294 | 21AL.5IN30.06B | 12 973 |
| 760 | 700 | 21AL.3IN30.07B | 10 221 | 21AL.4IN30.07B | 12 102 | 21AL.5IN30.07B | 13 983 |
| 860 | 800 | 21AL.3IN30.08B | 10 795 | 21AL.4IN30.08B | 12 867 | 21AL.5IN30.08B | 14 939 |
| 960 | 900 | 21AL.3IN30.09B | 11 680 | 21AL.4IN30.09B | 14 048 | 21AL.5IN30.09B | 16 415 |
| 1060 | 1000 | 21AL.3IN30.10B | 12 286 | 21AL.4IN30.10B | 14 855 | 21AL.5IN30.10B | 17 425 |
| 1160 | 1100 | 21AL.3IN30.11B | 12 879 | 21AL.4IN30.11B | 15 646 | 21AL.5IN30.11B | 18 413 |
| 1260 | 1200 | 21AL.3IN30.12B | 13 497 | 21AL.4IN30.12B | 16 470 | 21AL.5IN30.12B | 19 443 |
| 1360 | 1300 | 21AL.3IN30.13B | 14 351 | 21AL.4IN30.13B | 17 609 | 21AL.5IN30.13B | 20 866 |
| 1460 | 1400 | 21AL.3IN30.14B | 14 957 | 21AL.4IN30.14B | 18 416 | 21AL.5IN30.14B | 21 876 |
| 1560 | 1500 | 21AL.3IN30.15B | 15 562 | 21AL.4IN30.15B | 19 224 | 21AL.5IN30.15B | 22 885 |
| 1660 | 1600 | 21AL.3IN30.16B | 16 168 | 21AL.4IN30.16B | 20 031 | 21AL.5IN30.16B | 23 894 |
| 1760 | 1700 | 21AL.3IN30.17B | 17 022 | 21AL.4IN30.17B | 21 170 | 21AL.5IN30.17B | 25 318 |
| 1860 | 1800 | 21AL.3IN30.18B | 17 627 | 21AL.4IN30.18B | 21 977 | 21AL.5IN30.18B | 26 327 |
| Дополнительная линейная секция Additional line section / Elemento lineare aggiuntivo | | | | | | | |
| 630 | 600 | 21AL.3IN30.06E | 7 326 | 21AL.4IN30.06E | 9 005 | 21AL.5IN30.06E | 10 684 |
| 730 | 700 | 21AL.3IN30.07E | 7 932 | 21AL.4IN30.07E | 9 813 | 21AL.5IN30.07E | 11 694 |
| 830 | 800 | 21AL.3IN30.08E | 8 506 | 21AL.4IN30.08E | 10 578 | 21AL.5IN30.08E | 12 650 |
| 930 | 900 | 21AL.3IN30.09E | 9 391 | 21AL.4IN30.09E | 11 759 | 21AL.5IN30.09E | 14 126 |
| 1030 | 1000 | 21AL.3IN30.10E | 9 997 | 21AL.4IN30.10E | 12 566 | 21AL.5IN30.10E | 15 136 |
| 1130 | 1100 | 21AL.3IN30.11E | 10 590 | 21AL.4IN30.11E | 13 357 | 21AL.5IN30.11E | 16 124 |
| 1230 | 1200 | 21AL.3IN30.12E | 11 208 | 21AL.4IN30.12E | 14 181 | 21AL.5IN30.12E | 17 154 |
| 1330 | 1300 | 21AL.3IN30.13E | 12 062 | 21AL.4IN30.13E | 15 320 | 21AL.5IN30.13E | 18 577 |
| 1430 | 1400 | 21AL.3IN30.14E | 12 668 | 21AL.4IN30.14E | 16 127 | 21AL.5IN30.14E | 19 587 |
| 1530 | 1500 | 21AL.3IN30.15E | 13 273 | 21AL.4IN30.15E | 16 935 | 21AL.5IN30.15E | 20 596 |
| 1630 | 1600 | 21AL.3IN30.16E | 13 879 | 21AL.4IN30.16E | 17 742 | 21AL.5IN30.16E | 21 605 |
| 1730 | 1700 | 21AL.3IN30.17E | 14 733 | 21AL.4IN30.17E | 18 881 | 21AL.5IN30.17E | 23 029 |
| 1830 | 1800 | 21AL.3IN30.18E | 15 338 | 21AL.4IN30.18E | 19 688 | 21AL.5IN30.18E | 24 038 |
| Угловая секция Corner section / Elemento angolare | | | | | | | |
| 630 | 600 | 21AL.3IN30.06C | 7 326 | 21AL.4IN30.06C | 9 005 | 21AL.5IN30.06C | 10 684 |
| 730 | 700 | 21AL.3IN30.07C | 7 932 | 21AL.4IN30.07C | 9 813 | 21AL.5IN30.07C | 11 694 |
| 830 | 800 | 21AL.3IN30.08C | 8 506 | 21AL.4IN30.08C | 10 578 | 21AL.5IN30.08C | 12 650 |
| 930 | 900 | 21AL.3IN30.09C | 9 391 | 21AL.4IN30.09C | 11 759 | 21AL.5IN30.09C | 14 126 |
| 1030 | 1000 | 21AL.3IN30.10C | 9 997 | 21AL.4IN30.10C | 12 566 | 21AL.5IN30.10C | 15 136 |
| 1130 | 1100 | 21AL.3IN30.11C | 10 590 | 21AL.4IN30.11C | 13 357 | 21AL.5IN30.11C | 16 124 |
| 1230 | 1200 | 21AL.3IN30.12C | 11 208 | 21AL.4IN30.12C | 14 181 | 21AL.5IN30.12C | 17 154 |
| 1330 | 1300 | 21AL.3IN30.13C | 12 062 | 21AL.4IN30.13C | 15 320 | 21AL.5IN30.13C | 18 577 |
| 1430 | 1400 | 21AL.3IN30.14C | 12 668 | 21AL.4IN30.14C | 16 127 | 21AL.5IN30.14C | 19 587 |
| 1530 | 1500 | 21AL.3IN30.15C | 13 273 | 21AL.4IN30.15C | 16 935 | 21AL.5IN30.15C | 20 596 |
| 1630 | 1600 | 21AL.3IN30.16C | 13 879 | 21AL.4IN30.16C | 17 742 | 21AL.5IN30.16C | 21 605 |
| 1730 | 1700 | 21AL.3IN30.17C | 14 733 | 21AL.4IN30.17C | 18 881 | 21AL.5IN30.17C | 23 029 |
| 1830 | 1800 | 21AL.3IN30.18C | 15 338 | 21AL.4IN30.18C | 19 688 | 21AL.5IN30.18C | 24 038 |

H. 2100
D. 400

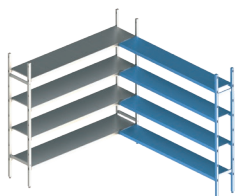
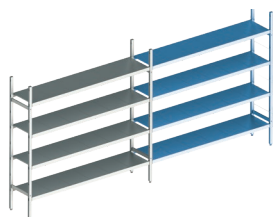
| Общая длина, мм Total length, mm Lunghezza totale, mm | Длина полки, мм Shelf length, mm Lunghezza ripiano, mm | Цена, руб. / Price, rubles / Prezzo, rubli | | | | | |
|--|---|--|---------------|-------------------------------|---------------|--------------------------------|---------------|
| | | 3 яруса / 3 tiers / 3 livelli | | 4 яруса / 4 tiers / 4 livelli | | 5 ярусов / 5 tiers / 5 livelli | |
| Базовая секция Basic section / Elemento base | | | | | | | |
| 660 | 600 | 21AL.3IN40.06B | 10 570 | 21AL.4IN40.06B | 12 484 | 21AL.5IN40.06B | 14 398 |
| 760 | 700 | 21AL.3IN40.07B | 11 234 | 21AL.4IN40.07B | 13 370 | 21AL.5IN40.07B | 15 505 |
| 860 | 800 | 21AL.3IN40.08B | 11 899 | 21AL.4IN40.08B | 14 256 | 21AL.5IN40.08B | 16 612 |
| 960 | 900 | 21AL.3IN40.09B | 12 988 | 21AL.4IN40.09B | 15 708 | 21AL.5IN40.09B | 18 428 |
| 1060 | 1000 | 21AL.3IN40.10B | 13 652 | 21AL.4IN40.10B | 16 593 | 21AL.5IN40.10B | 19 535 |
| 1160 | 1100 | 21AL.3IN40.11B | 14 316 | 21AL.4IN40.11B | 17 479 | 21AL.5IN40.11B | 20 642 |
| 1260 | 1200 | 21AL.3IN40.12B | 14 981 | 21AL.4IN40.12B | 18 365 | 21AL.5IN40.12B | 21 749 |
| 1360 | 1300 | 21AL.3IN40.13B | 16 070 | 21AL.4IN40.13B | 19 817 | 21AL.5IN40.13B | 23 564 |
| 1460 | 1400 | 21AL.3IN40.14B | 16 734 | 21AL.4IN40.14B | 20 703 | 21AL.5IN40.14B | 24 671 |
| 1560 | 1500 | 21AL.3IN40.15B | 17 398 | 21AL.4IN40.15B | 21 588 | 21AL.5IN40.15B | 25 778 |
| 1660 | 1600 | 21AL.3IN40.16B | 18 063 | 21AL.4IN40.16B | 22 474 | 21AL.5IN40.16B | 26 886 |
| 1760 | 1700 | 21AL.3IN40.17B | 19 152 | 21AL.4IN40.17B | 23 926 | 21AL.5IN40.17B | 28 701 |
| 1860 | 1800 | 21AL.3IN40.18B | 19 816 | 21AL.4IN40.18B | 24 812 | 21AL.5IN40.18B | 29 808 |
| Дополнительная линейная секция Additional line section / Elemento lineare aggiuntivo | | | | | | | |
| 630 | 600 | 21AL.3IN40.06E | 8 156 | 21AL.4IN40.06E | 10 070 | 21AL.5IN40.06E | 11 984 |
| 730 | 700 | 21AL.3IN40.07E | 8 820 | 21AL.4IN40.07E | 10 956 | 21AL.5IN40.07E | 13 091 |
| 830 | 800 | 21AL.3IN40.08E | 9 485 | 21AL.4IN40.08E | 11 842 | 21AL.5IN40.08E | 14 198 |
| 930 | 900 | 21AL.3IN40.09E | 10 574 | 21AL.4IN40.09E | 13 294 | 21AL.5IN40.09E | 16 014 |
| 1030 | 1000 | 21AL.3IN40.10E | 11 238 | 21AL.4IN40.10E | 14 179 | 21AL.5IN40.10E | 17 121 |
| 1130 | 1100 | 21AL.3IN40.11E | 11 902 | 21AL.4IN40.11E | 15 065 | 21AL.5IN40.11E | 18 228 |
| 1230 | 1200 | 21AL.3IN40.12E | 12 567 | 21AL.4IN40.12E | 15 951 | 21AL.5IN40.12E | 19 335 |
| 1330 | 1300 | 21AL.3IN40.13E | 13 656 | 21AL.4IN40.13E | 17 403 | 21AL.5IN40.13E | 21 150 |
| 1430 | 1400 | 21AL.3IN40.14E | 14 320 | 21AL.4IN40.14E | 18 289 | 21AL.5IN40.14E | 22 257 |
| 1530 | 1500 | 21AL.3IN40.15E | 14 984 | 21AL.4IN40.15E | 19 174 | 21AL.5IN40.15E | 23 364 |
| 1630 | 1600 | 21AL.3IN40.16E | 15 649 | 21AL.4IN40.16E | 20 060 | 21AL.5IN40.16E | 24 472 |
| 1730 | 1700 | 21AL.3IN40.17E | 16 738 | 21AL.4IN40.17E | 21 512 | 21AL.5IN40.17E | 26 287 |
| 1830 | 1800 | 21AL.3IN40.18E | 17 402 | 21AL.4IN40.18E | 22 398 | 21AL.5IN40.18E | 27 394 |
| Угловая секция Corner section / Elemento angolare | | | | | | | |
| 630 | 600 | 21AL.3IN40.06C | 8 156 | 21AL.4IN40.06C | 10 070 | 21AL.5IN40.06C | 11 984 |
| 730 | 700 | 21AL.3IN40.07C | 8 820 | 21AL.4IN40.07C | 10 956 | 21AL.5IN40.07C | 13 091 |
| 830 | 800 | 21AL.3IN40.08C | 9 485 | 21AL.4IN40.08C | 11 842 | 21AL.5IN40.08C | 14 198 |
| 930 | 900 | 21AL.3IN40.09C | 10 574 | 21AL.4IN40.09C | 13 294 | 21AL.5IN40.09C | 16 014 |
| 1030 | 1000 | 21AL.3IN40.10C | 11 238 | 21AL.4IN40.10C | 14 179 | 21AL.5IN40.10C | 17 121 |
| 1130 | 1100 | 21AL.3IN40.11C | 11 902 | 21AL.4IN40.11C | 15 065 | 21AL.5IN40.11C | 18 228 |
| 1230 | 1200 | 21AL.3IN40.12C | 12 567 | 21AL.4IN40.12C | 15 951 | 21AL.5IN40.12C | 19 335 |
| 1330 | 1300 | 21AL.3IN40.13C | 13 656 | 21AL.4IN40.13C | 17 403 | 21AL.5IN40.13C | 21 150 |
| 1430 | 1400 | 21AL.3IN40.14C | 14 320 | 21AL.4IN40.14C | 18 289 | 21AL.5IN40.14C | 22 257 |
| 1530 | 1500 | 21AL.3IN40.15C | 14 984 | 21AL.4IN40.15C | 19 174 | 21AL.5IN40.15C | 23 364 |
| 1630 | 1600 | 21AL.3IN40.16C | 15 649 | 21AL.4IN40.16C | 20 060 | 21AL.5IN40.16C | 24 472 |
| 1730 | 1700 | 21AL.3IN40.17C | 16 738 | 21AL.4IN40.17C | 21 512 | 21AL.5IN40.17C | 26 287 |
| 1830 | 1800 | 21AL.3IN40.18C | 17 402 | 21AL.4IN40.18C | 22 398 | 21AL.5IN40.18C | 27 394 |



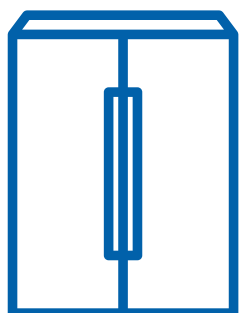
H. 2100
D. 500



| Общая длина, мм Total length, mm Lunghezza totale, mm | Длина полки, мм Shelf length, mm Lunghezza ripiano, mm | Цена, руб. / Price, rubles / Prezzo, rubli | | | | | |
|--|---|--|---------------|-------------------------------|---------------|--------------------------------|---------------|
| | | 3 яруса / 3 tiers / 3 livelli | | 4 яруса / 4 tiers / 4 livelli | | 5 ярусов / 5 tiers / 5 livelli | |
| Базовая секция Basic section / Elemento base | | | | | | | |
| 660 | 600 | 21AL.3IN50.06B | 11 544 | 21AL.4IN50.06B | 13 699 | 21AL.5IN50.06B | 15 855 |
| 760 | 700 | 21AL.3IN50.07B | 12 395 | 21AL.4IN50.07B | 14 833 | 21AL.5IN50.07B | 17 272 |
| 860 | 800 | 21AL.3IN50.08B | 13 245 | 21AL.4IN50.08B | 15 967 | 21AL.5IN50.08B | 18 690 |
| 960 | 900 | 21AL.3IN50.09B | 14 324 | 21AL.4IN50.09B | 17 406 | 21AL.5IN50.09B | 20 487 |
| 1060 | 1000 | 21AL.3IN50.10B | 15 174 | 21AL.4IN50.10B | 18 540 | 21AL.5IN50.10B | 21 905 |
| 1160 | 1100 | 21AL.3IN50.11B | 16 025 | 21AL.4IN50.11B | 19 674 | 21AL.5IN50.11B | 23 323 |
| 1260 | 1200 | 21AL.3IN50.12B | 16 875 | 21AL.4IN50.12B | 20 808 | 21AL.5IN50.12B | 24 740 |
| 1360 | 1300 | 21AL.3IN50.13B | 17 954 | 21AL.4IN50.13B | 22 246 | 21AL.5IN50.13B | 26 538 |
| 1460 | 1400 | 21AL.3IN50.14B | 18 804 | 21AL.4IN50.14B | 23 380 | 21AL.5IN50.14B | 27 955 |
| 1560 | 1500 | 21AL.3IN50.15B | 19 655 | 21AL.4IN50.15B | 24 514 | 21AL.5IN50.15B | 29 373 |
| 1660 | 1600 | 21AL.3IN50.16B | 20 505 | 21AL.4IN50.16B | 25 648 | 21AL.5IN50.16B | 30 790 |
| 1760 | 1700 | 21AL.3IN50.17B | 21 584 | 21AL.4IN50.17B | 27 086 | 21AL.5IN50.17B | 32 588 |
| 1860 | 1800 | 21AL.3IN50.18B | 22 434 | 21AL.4IN50.18B | 28 220 | 21AL.5IN50.18B | 34 005 |
| Дополнительная линейная секция Additional line section / Elemento lineare aggiuntivo | | | | | | | |
| 630 | 600 | 21AL.3IN50.06E | 9 005 | 21AL.4IN50.06E | 11 160 | 21AL.5IN50.06E | 13 316 |
| 730 | 700 | 21AL.3IN50.07E | 9 856 | 21AL.4IN50.07E | 12 294 | 21AL.5IN50.07E | 14 733 |
| 830 | 800 | 21AL.3IN50.08E | 10 706 | 21AL.4IN50.08E | 13 428 | 21AL.5IN50.08E | 16 151 |
| 930 | 900 | 21AL.3IN50.09E | 11 785 | 21AL.4IN50.09E | 14 867 | 21AL.5IN50.09E | 17 948 |
| 1030 | 1000 | 21AL.3IN50.10E | 12 635 | 21AL.4IN50.10E | 16 001 | 21AL.5IN50.10E | 19 366 |
| 1130 | 1100 | 21AL.3IN50.11E | 13 486 | 21AL.4IN50.11E | 17 135 | 21AL.5IN50.11E | 20 784 |
| 1230 | 1200 | 21AL.3IN50.12E | 14 336 | 21AL.4IN50.12E | 18 269 | 21AL.5IN50.12E | 22 201 |
| 1330 | 1300 | 21AL.3IN50.13E | 15 415 | 21AL.4IN50.13E | 19 707 | 21AL.5IN50.13E | 23 999 |
| 1430 | 1400 | 21AL.3IN50.14E | 16 265 | 21AL.4IN50.14E | 20 841 | 21AL.5IN50.14E | 25 416 |
| 1530 | 1500 | 21AL.3IN50.15E | 17 116 | 21AL.4IN50.15E | 21 975 | 21AL.5IN50.15E | 26 834 |
| 1630 | 1600 | 21AL.3IN50.16E | 17 966 | 21AL.4IN50.16E | 23 109 | 21AL.5IN50.16E | 28 251 |
| 1730 | 1700 | 21AL.3IN50.17E | 19 045 | 21AL.4IN50.17E | 24 547 | 21AL.5IN50.17E | 30 049 |
| 1830 | 1800 | 21AL.3IN50.18E | 19 895 | 21AL.4IN50.18E | 25 681 | 21AL.5IN50.18E | 31 466 |
| Угловая секция Corner section / Elemento angolare | | | | | | | |
| 630 | 600 | 21AL.3IN50.06C | 9 005 | 21AL.4IN50.06C | 11 160 | 21AL.5IN50.06C | 13 316 |
| 730 | 700 | 21AL.3IN50.07C | 9 856 | 21AL.4IN50.07C | 12 294 | 21AL.5IN50.07C | 14 733 |
| 830 | 800 | 21AL.3IN50.08C | 10 706 | 21AL.4IN50.08C | 13 428 | 21AL.5IN50.08C | 16 151 |
| 930 | 900 | 21AL.3IN50.09C | 11 785 | 21AL.4IN50.09C | 14 867 | 21AL.5IN50.09C | 17 948 |
| 1030 | 1000 | 21AL.3IN50.10C | 12 635 | 21AL.4IN50.10C | 16 001 | 21AL.5IN50.10C | 19 366 |
| 1130 | 1100 | 21AL.3IN50.11C | 13 486 | 21AL.4IN50.11C | 17 135 | 21AL.5IN50.11C | 20 784 |
| 1230 | 1200 | 21AL.3IN50.12C | 14 336 | 21AL.4IN50.12C | 18 269 | 21AL.5IN50.12C | 22 201 |
| 1330 | 1300 | 21AL.3IN50.13C | 15 415 | 21AL.4IN50.13C | 19 707 | 21AL.5IN50.13C | 23 999 |
| 1430 | 1400 | 21AL.3IN50.14C | 16 265 | 21AL.4IN50.14C | 20 841 | 21AL.5IN50.14C | 25 416 |
| 1530 | 1500 | 21AL.3IN50.15C | 17 116 | 21AL.4IN50.15C | 21 975 | 21AL.5IN50.15C | 26 834 |
| 1630 | 1600 | 21AL.3IN50.16C | 17 966 | 21AL.4IN50.16C | 23 109 | 21AL.5IN50.16C | 28 251 |
| 1730 | 1700 | 21AL.3IN50.17C | 19 045 | 21AL.4IN50.17C | 24 547 | 21AL.5IN50.17C | 30 049 |
| 1830 | 1800 | 21AL.3IN50.18C | 19 895 | 21AL.4IN50.18C | 25 681 | 21AL.5IN50.18C | 31 466 |



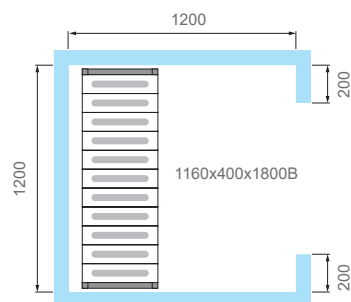




ВАРИАНТЫ РАЗМЕЩЕНИЯ СТЕЛЛАЖЕЙ В ХОЛОДИЛЬНЫХ КАМЕРАХ

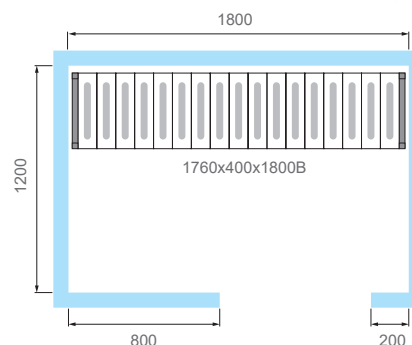
ALLOCATION OPTIONS FOR SHELVING
IN REFRIGERATING CAMERAS

ESEMPI
DI POSIZIONAMENTO SCAFFALATURE
ALL'INTERNO DELLE CELLE

КХН-2,94
КХН-2,94 / КХН-2,94

H=1800; D=400

| Ярусы / Tiers / Livelli | Артикул / Артикул / Артикул | Цена* / Price* / Prezzo* |
|----------------------------|--------------------------------|-----------------------------|
| 3 | 18AL.3PP40.11B | 9 577 |
| 4 | 18AL.4PP40.11B | 11 410 |
| 5 | 18AL.5PP40.11B | 13 243 |

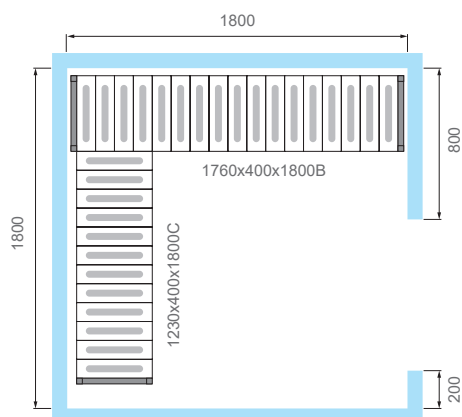
КХН-4,41
КХН-4,41 / КХН-4,41

H=1800; D=400

| Ярусы / Tiers / Livelli | Артикул / Артикул / Артикул | Цена* / Price* / Prezzo* |
|----------------------------|--------------------------------|-----------------------------|
| 3 | 18AL.3PP40.17B | 12 150 |
| 4 | 18AL.4PP40.17B | 14 840 |
| 5 | 18AL.5PP40.17B | 17 531 |

*Цена за комплект стеллажей с полипропиленовыми полками, руб.

*Price for shelving set with polypropylene shelves, rubles / *Prezzo per composizione scaffalature con ripiani in polipropilene, rubli

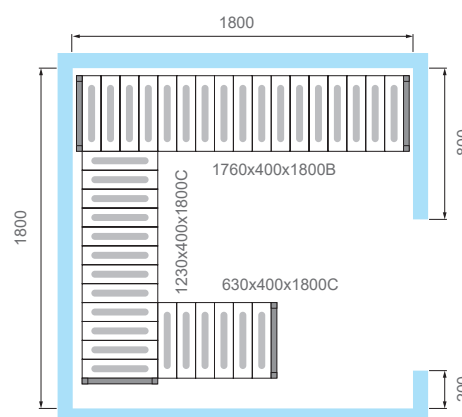
КХН-6,61**Вариант 1 / Variant 1 / Composizione 1**

H=1800; D=400

| Ярусы / Tiers / Livelli | Артикул / Артикул / Артикул | Цена* / Price* / Prezzo* |
|----------------------------|----------------------------------|-----------------------------|
| 3 | 18AL.3PP40.17B 18AL.3PP40.12C | 20 121 |
| 4 | 18AL.4PP40.17B 18AL.4PP40.12C | 24 787 |
| 5 | 18AL.5PP40.17B 18AL.5PP40.12C | 29 452 |

*Цена за комплект стеллажей с полипропиленовыми полками, руб.

*Price for shelving set with polypropylene shelves, rubles / *Prezzo per composizione scaffalature con ripiani in polipropilene, rubli

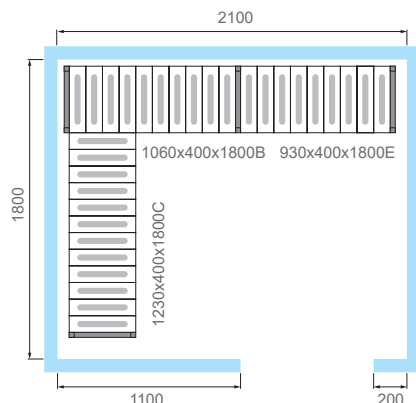
Вариант 2 / Variant 2 / Composizione 2

H=1800; D=400

| Ярусы / Tiers / Livelli | Артикул / Артикул / Артикул | Цена* / Price* / Prezzo* |
|----------------------------|--|-----------------------------|
| 3 | 18AL.3PP40.17B 18AL.3PP40.12C 18AL.3PP40.06C | 25 520 |
| 4 | 18AL.4PP40.17B 18AL.4PP40.12C 18AL.4PP40.06C | 31 306 |
| 5 | 18AL.5PP40.17B 18AL.5PP40.12C 18AL.5PP40.06C | 37 086 |

KXH-7,71

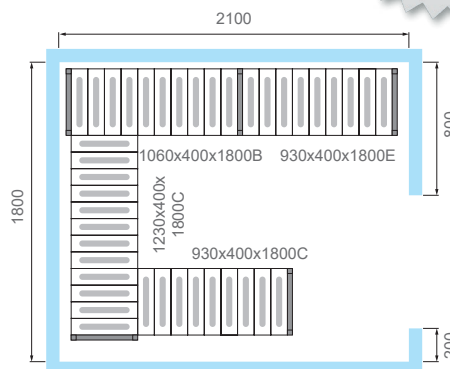
Вариант 1 / Variant 1 / Composizione 1



H=1800; D=400

| Ярусы / Tiers / Livelli | Артикул / Артикул / Артикул | Цена* / Price* / Prezzo* |
|----------------------------|--|-----------------------------|
| 3 | 18AL.3PP40.10B 18AL.3PP40.09E 18AL.3PP40.12C | 23 805 |
| 4 | 18AL.4PP40.10B 18AL.4PP40.09E 18AL.4PP40.12C | 29 018 |
| 5 | 18AL.5PP40.10B 18AL.5PP40.09E 18AL.5PP40.12C | 34 227 |

Вариант 2 / Variant 2 / Composizione 2

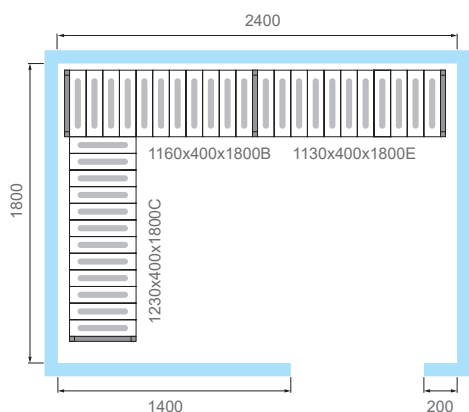


H=1800; D=400

| Ярусы / Tiers / Livelli | Артикул / Артикул / Артикул | Цена* / Price* / Prezzo* |
|----------------------------|--|-----------------------------|
| 3 | 18AL.3PP40.10B 18AL.3PP40.09E 18AL.3PP40.12C 18AL.3PP40.09C | 30 490 |
| 4 | 18AL.4PP40.10B 18AL.4PP40.09E 18AL.4PP40.12C 18AL.4PP40.09C | 37 250 |
| 5 | 18AL.5PP40.10B 18AL.5PP40.09E 18AL.5PP40.12C 18AL.5PP40.09C | 44 004 |

KXH-8,81

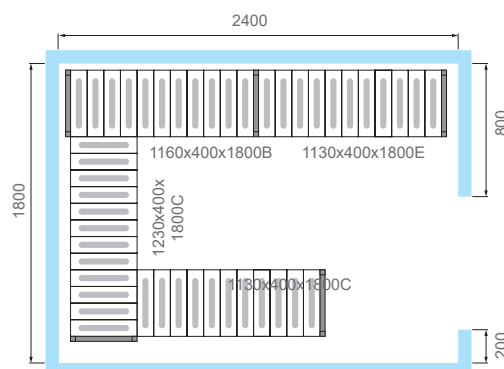
Вариант 1 / Variant 1 / Composizione 1



H=1800; D=400

| Ярусы / Tiers / Livelli | Артикул / Артикул / Артикул | Цена* / Price* / Prezzo* |
|----------------------------|--|-----------------------------|
| 3 | 18AL.3PP40.11B 18AL.3PP40.11E 18AL.3PP40.12C | 25 091 |
| 4 | 18AL.4PP40.11B 18AL.4PP40.11E 18AL.4PP40.12C | 30 733 |
| 5 | 18AL.5PP40.11B 18AL.5PP40.11E 18AL.5PP40.12C | 36 371 |

Вариант 2 / Variant 2 / Composizione 2

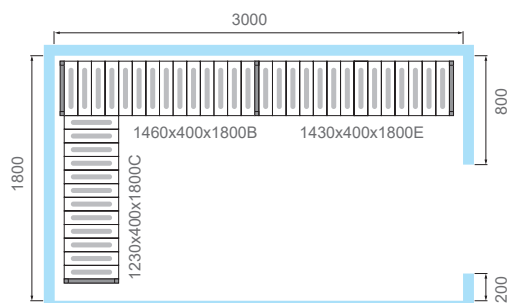


H=1800; D=400

| Ярусы / Tiers / Livelli | Артикул / Артикул / Артикул | Цена* / Price* / Prezzo* |
|----------------------------|--|-----------------------------|
| 3 | 18AL.3PP40.11B 18AL.3PP40.11E 18AL.3PP40.12C 18AL.3PP40.11C | 32 634 |
| 4 | 18AL.4PP40.11B 18AL.4PP40.11E 18AL.4PP40.12C 18AL.4PP40.11C | 40 109 |
| 5 | 18AL.5PP40.11B 18AL.5PP40.11E 18AL.5PP40.12C 18AL.5PP40.11C | 47 578 |

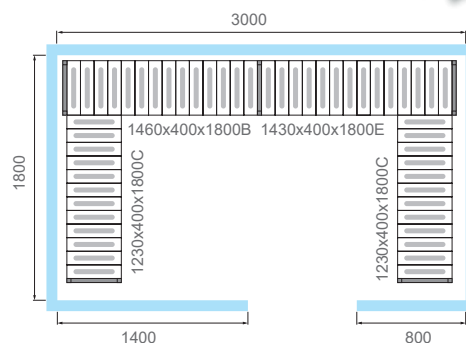
*Цена за комплект стеллажей с полипропиленовыми полками, руб.

*Price for shelving set with polypropylene shelves, rubles / *Prezzo per composizione scaffalature con ripiani in polipropilene, rubli

KXH-11,02**Вариант 1 / Variant 1 / Composizione 1**

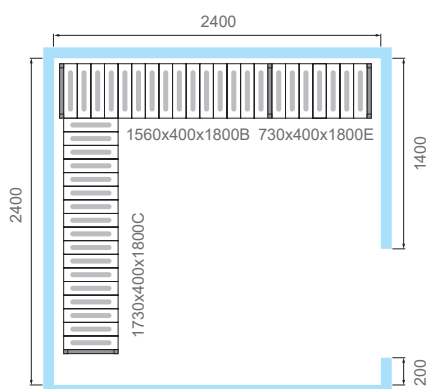
H=1800; D=400

| Ярусы / Tiers / Livelli | Артикул / Артикул / Артикул | Цена* / Price* / Prezzo* |
|----------------------------|--|-----------------------------|
| 3 | 18AL.3PP40.14B 18AL.3PP40.14E 18AL.3PP40.12C | 27 664 |
| 4 | 18AL.4PP40.14B 18AL.4PP40.14E 18AL.4PP40.12C | 34 163 |
| 5 | 18AL.5PP40.14B 18AL.5PP40.14E 18AL.5PP40.12C | 40 658 |

Вариант 2 / Variant 2 / Composizione 2

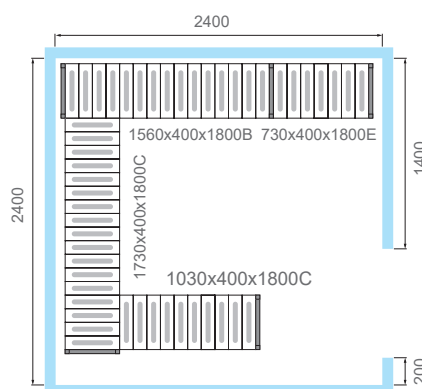
H=1800; D=400

| Ярусы / Tiers / Livelli | Артикул / Артикул / Артикул | Цена* / Price* / Prezzo* |
|----------------------------|--|-----------------------------|
| 3 | 18AL.3PP40.14B 18AL.3PP40.14E 18AL.3PP40.12C-2 | 35 635 |
| 4 | 18AL.4PP40.14B 18AL.4PP40.14E 18AL.4PP40.12C-2 | 44 110 |
| 5 | 18AL.5PP40.14B 18AL.5PP40.14E 18AL.5PP40.12C-2 | 52 579 |

KXH-11,75**Вариант 1 / Variant 1 / Composizione 1**

H=1800; D=400

| Ярусы / Tiers / Livelli | Артикул / Артикул / Артикул | Цена* / Price* / Prezzo* |
|----------------------------|--|-----------------------------|
| 3 | 18AL.3PP40.15B 18AL.3PP40.07E 18AL.3PP40.17C | 27 235 |
| 4 | 18AL.4PP40.15B 18AL.4PP40.07E 18AL.4PP40.17C | 33 593 |
| 5 | 18AL.5PP40.15B 18AL.5PP40.07E 18AL.5PP40.17C | 39 944 |

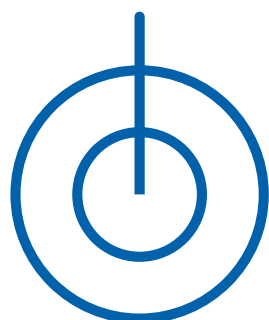
Вариант 2 / Variant 2 / Composizione 2

H=1800; D=400

| Ярусы / Tiers / Livelli | Артикул / Артикул / Артикул | Цена* / Price* / Prezzo* |
|----------------------------|--|-----------------------------|
| 3 | 18AL.3PP40.15B 18AL.3PP40.07E 18AL.3PP40.17C 18AL.3PP40.10C | 34 349 |
| 4 | 18AL.4PP40.15B 18AL.4PP40.07E 18AL.4PP40.17C 18AL.4PP40.10C | 42 397 |
| 5 | 18AL.5PP40.15B 18AL.5PP40.07E 18AL.5PP40.17C 18AL.5PP40.10C | 50 436 |

*Цена за комплект стеллажей с полипропиленовыми полками, руб.

*Price for shelving set with polypropylene shelves, rubles / *Prezzo per composizione scaffalature con ripiani in polipropilene, rubli



МОБИЛЬНЫЕ СТЕЛЛАЖИ

MOBILE SHELVING



МОБИЛЬНЫЕ СТЕЛЛАЖИ LOAD.ME.MOBILE

Mobile shelving LOAD.ME.MOBILE

Оптимальным решением для расширения функциональных возможностей стеллажных модулей являются мобильные стеллажи LOAD.ME.MOBILE.

Мобильные стеллажи обеспечивают перемещение их с минимальными усилиями и полный доступ к различным участкам помещения. Они позволяют создавать дополнительные возможности увеличения емкости складирования и оперативного перемещения товаров в помещении.

Изготовленные из анодированного алюминия, с возможностью выбора полок из нержавеющей стали или ПЭВД, пригодного для взаимодействия с продуктами питания, мобильные стеллажи отличаются высокой прочностью, устойчивостью и практичностью.

Шарнирные колеса, оснащенные стопором, обеспечивают высокую безопасность, плавную работу и маневренность тележки даже при полной загрузке.

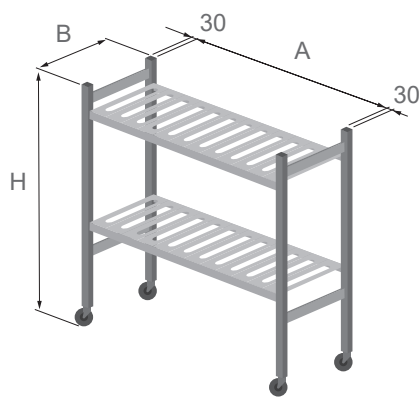
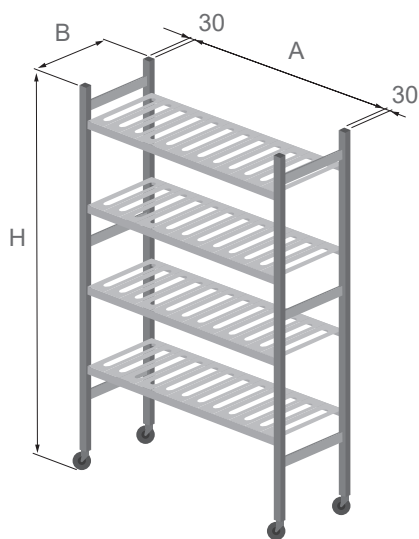
The optimal solution for functionality expanding of shelving system is the mobile shelving LOAD.ME.MOBILE.

Mobile shelving allows you to move them with minimal effort and full access to various areas of the room. They allow you to create additional opportunities to increase the storage capacity and goods rapid movement in the room. Made of anodized aluminum with two type shelves for your choice (made of stainless steel or polyethylene HDPE), all suitable for interaction with food, mobile shelving are characterized by high strength, stability and practicality.

The articulated wheels, equipped with a stopper, provide high safety, smooth operation and maneuverability even when fully the mobile shelving is fully loaded.

РАЗМЕРНЫЙ РЯД МОБИЛЬНЫХ ТЕЛЕЖЕК

Size range of mobile shelving



| A | B | H | Нагрузка на полку, кг* Load capacity for shelf, kg* |
|------|------------|---------------------|---|
| 800 | 400 500 | 1800 1100 900 | 100 кг при 2-х ярусах полок 80 кг при 3-х ярусах полок 60 кг при 4-х ярусах полок 100 kg at 2 tiers of shelves 80 kg at 3 tiers of shelves 60 kg at 4 tiers of shelves |
| 900 | | | |
| 1000 | | | |
| 1100 | | | |
| 1200 | | | |
| 1300 | | | |

*Макс. нагрузка на стеллаж – 240 кг / Max load capacity for shelving – 240 kg

ПОДТОВАРНИКИ LOAD.ME.EXTRA

Dunnage rack LOAD.ME.EXTRA

Мобильные стеллажи-подтоварники LOAD.ME.EXTRA – низкоуровневые блоки, изготовленные со стандартной высотой 300 мм могут дополнять стеллажи в холодильных камерах, размещаться под столами, использоваться для предметов, пригодных только для хранения на низком уровне, и других индивидуальных применений.

Изготовленные из анодированного алюминия с полками из ПЭВД или нержавеющей стали обеспечивают высокую надежность и гигиеничность.

Могут быть выполнены как на колесах, так и с неподвижными опорами.

Dunnage rack LOAD.ME.EXTRA - low-level units manufactured with a standard height of 300 mm can complement shelving in coldrooms, be placed under tables, be used for items suitable only for low-level storage, and other individual applications.

Made of anodized aluminum with shelves made of polyethylene HDPE or stainless steel, they provide high reliability and hygiene.

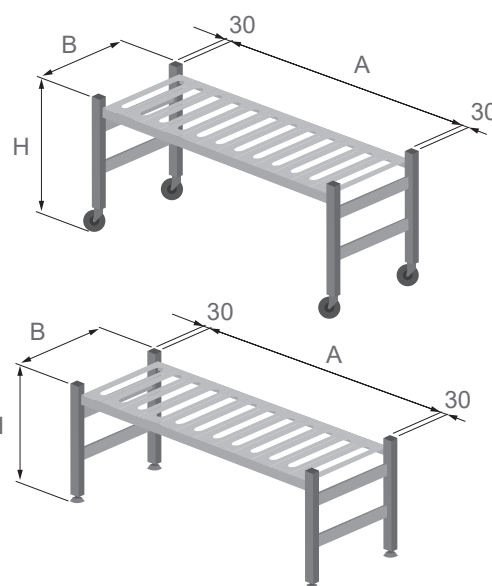
They can be made both on wheels and with fixed supports.



РАЗМЕРНЫЙ РЯД ПОДТОВАРНИКОВ

Size range of dunnage rack

| A | B | H | Нагрузка на полку, кг Load capacity for shelf, kg |
|------|------------|-----|--|
| 600 | 400 500 | 300 | 180 |
| 800 | | | 150 |
| 1000 | | | 120 |
| 1200 | | | 100 |



Мобильные стеллажи
LOAD.ME.MOBILE POLY
 Mobile shelving
LOAD.ME.MOBILE POLY



| Артикул Article Articolo | Высота H, мм Height H, mm Altezza H, m | Длина, мм Length, mm Lunghezza, mm | Глубина D, мм Depth D, mm Profondità D, mm | Ярусы Tiers Livelli | Цена, руб. Price, rubles Prezzo, rubli |
|--------------------------------|--|--|--|---------------------------|--|
| MP 18.4.40.08 | 1850 | 800 | 400 | 4 | 12 148 |
| MP 18.4.40.09 | | 900 | | 4 | 12 720 |
| MP 18.4.40.10 | | 1000 | | 4 | 13 288 |
| MP 18.4.40.11 | | 1100 | | 4 | 13 860 |
| MP 18.4.40.12 | | 1200 | | 4 | 14 432 |
| MP 18.4.40.13 | | 1300 | | 4 | 15 004 |
| MP 18.4.50.08 | 1850 | 800 | 500 | 4 | 12 686 |
| MP 18.4.50.09 | | 900 | | 4 | 13 322 |
| MP 18.4.50.10 | | 1000 | | 4 | 13 958 |
| MP 18.4.50.11 | | 1100 | | 4 | 14 594 |
| MP 18.4.50.12 | | 1200 | | 4 | 15 230 |
| MP 18.4.50.13 | | 1300 | | 4 | 15 866 |
| MP 11.2.40.08 | 1100 | 800 | 400 | 2 | 7 920 |
| MP 11.2.40.09 | | 900 | | 2 | 8 206 |
| MP 11.2.40.10 | | 1000 | | 2 | 8 490 |
| MP 11.2.40.11 | | 1100 | | 2 | 8 776 |
| MP 11.2.40.12 | | 1200 | | 2 | 9 062 |
| MP 11.2.40.13 | | 1300 | | 2 | 9 348 |
| MP 11.2.50.08 | 1100 | 800 | 500 | 2 | 8 236 |
| MP 11.2.50.09 | | 900 | | 2 | 8 554 |
| MP 11.2.50.10 | | 1000 | | 2 | 8 872 |
| MP 11.2.50.11 | | 1100 | | 2 | 9 190 |
| MP 11.2.50.12 | | 1200 | | 2 | 9 508 |
| MP 11.2.50.13 | | 1300 | | 2 | 9 826 |
| MP 09.2.40.08 | 900 | 800 | 400 | 2 | 7 544 |
| MP 09.2.40.09 | | 900 | | 2 | 7 830 |
| MP 09.2.40.10 | | 1000 | | 2 | 8 114 |
| MP 09.2.40.11 | | 1100 | | 2 | 8 400 |
| MP 09.2.40.12 | | 1200 | | 2 | 8 686 |
| MP 09.2.40.13 | | 1300 | | 2 | 8 972 |
| MP 09.2.50.08 | 900 | 800 | 500 | 2 | 7 858 |
| MP 09.2.50.09 | | 900 | | 2 | 8 176 |
| MP 09.2.50.10 | | 1000 | | 2 | 8 494 |
| MP 09.2.50.11 | | 1100 | | 2 | 8 812 |
| MP 09.2.50.12 | | 1200 | | 2 | 9 130 |
| MP 09.2.50.13 | | 1300 | | 2 | 9 448 |

Мобильные стеллажи LOAD.ME.MOBILE INOX

Mobile shelving

LOAD.ME.MOBILE INOX



| Артикул Article Articolo | Высота H, мм Height H, mm Altezza H, m | Длина, мм Length, mm Lunghezza, mm | Глубина D, мм Depth D, mm Profondità D, mm | Ярусы Tiers Livelli | Цена, руб. Price, rubles Prezzo, rubli |
|--------------------------------|--|--|--|---------------------------|--|
| MI 18.4.40.08 | 1850 | 800 | 400 | 4 | 16 814 |
| MI 18.4.40.09 | | 900 | | 4 | 18 354 |
| MI 18.4.40.10 | | 1000 | | 4 | 19 328 |
| MI 18.4.40.11 | | 1100 | | 4 | 20 301 |
| MI 18.4.40.12 | | 1200 | | 4 | 21 275 |
| MI 18.4.40.13 | | 1300 | | 4 | 22 816 |
| MI 18.4.50.08 | 1850 | 800 | 500 | 4 | 18 526 |
| MI 18.4.50.09 | | 900 | | 4 | 20 052 |
| MI 18.4.50.10 | | 1000 | | 4 | 21 274 |
| MI 18.4.50.11 | | 1100 | | 4 | 22 496 |
| MI 18.4.50.12 | | 1200 | | 4 | 23 718 |
| MI 18.4.50.13 | | 1300 | | 4 | 25 244 |
| MI 11.2.40.08 | 1100 | 800 | 400 | 2 | 10 253 |
| MI 11.2.40.09 | | 900 | | 2 | 11 023 |
| MI 11.2.40.10 | | 1000 | | 2 | 11 510 |
| MI 11.2.40.11 | | 1100 | | 2 | 11 997 |
| MI 11.2.40.12 | | 1200 | | 2 | 12 483 |
| MI 11.2.40.13 | | 1300 | | 2 | 13 254 |
| MI 11.2.50.08 | 1100 | 800 | 500 | 2 | 11 156 |
| MI 11.2.50.09 | | 900 | | 2 | 11 919 |
| MI 11.2.50.10 | | 1000 | | 2 | 12 530 |
| MI 11.2.50.11 | | 1100 | | 2 | 13 141 |
| MI 11.2.50.12 | | 1200 | | 2 | 13 752 |
| MI 11.2.50.13 | | 1300 | | 2 | 14 515 |
| MI 09.2.40.08 | 900 | 800 | 400 | 2 | 9 877 |
| MI 09.2.40.09 | | 900 | | 2 | 10 647 |
| MI 09.2.40.10 | | 1000 | | 2 | 11 134 |
| MI 09.2.40.11 | | 1100 | | 2 | 11 621 |
| MI 09.2.40.12 | | 1200 | | 2 | 12 107 |
| MI 09.2.40.13 | | 1300 | | 2 | 12 878 |
| MI 09.2.50.08 | 900 | 800 | 500 | 2 | 10 778 |
| MI 09.2.50.09 | | 900 | | 2 | 11 541 |
| MI 09.2.50.10 | | 1000 | | 2 | 12 152 |
| MI 09.2.50.11 | | 1100 | | 2 | 12 763 |
| MI 09.2.50.12 | | 1200 | | 2 | 13 374 |
| MI 09.2.50.13 | | 1300 | | 2 | 14 137 |

Мобильные стеллажи LOAD.ME.EXTRA POLY

Mobile shelving

LOAD.ME.MOBILE POLY



Мобильные стеллажи LOAD.ME.EXTRA INOX

Mobile shelving

LOAD.ME.MOBILE INOX



| Артикул Article Articolo | Высота Н, мм Height H, mm Altezza H, m | Длина, мм Length, mm Lunghezza, mm | Глубина D, мм Depth D, mm Profondità D, mm | Ярусы Tiers Livelli | Цена, руб. Price, rubles Prezzo, rubli |
|--------------------------------|--|--|--|---------------------------|--|
| EP 03.1.40.06 | 300 | 600 | 400 | 1 | 2 636 |
| EP 03.1.40.08 | | 800 | | 1 | 3 201 |
| EP 03.1.40.10 | | 1000 | | 1 | 3 579 |
| EP 03.1.40.12 | | 1200 | | 1 | 4 051 |
| EP 03.1.50.06 | 300 | 600 | 500 | 1 | 2 718 |
| EP 03.1.50.08 | | 800 | | 1 | 3 315 |
| EP 03.1.50.10 | | 1000 | | 1 | 3 726 |
| EP 03.1.50.12 | | 1200 | | 1 | 4 230 |
| EP 03.1.40.06W | 350* | 600 | 400 | 1 | 4 908 |
| EP 03.1.40.08W | | 800 | | 1 | 5 473 |
| EP 03.1.40.10W | | 1000 | | 1 | 5 851 |
| EP 03.1.40.12W | | 1200 | | 1 | 6 323 |
| EP 03.1.50.06W | 350* | 600 | 500 | 1 | 4 990 |
| EP 03.1.50.08W | | 800 | | 1 | 5 587 |
| EP 03.1.50.10W | | 1000 | | 1 | 5 998 |
| EP 03.1.50.12W | | 1200 | | 1 | 6 502 |
| EI 03.1.40.06 | 300 | 600 | 400 | 1 | 3 602 |
| EI 03.1.40.08 | | 800 | | 1 | 4 368 |
| EI 03.1.40.10 | | 1000 | | 1 | 5 089 |
| EI 03.1.40.12 | | 1200 | | 1 | 5 762 |
| EI 03.1.50.06 | 300 | 600 | 500 | 1 | 3 885 |
| EI 03.1.50.08 | | 800 | | 1 | 4 775 |
| EI 03.1.50.10 | | 1000 | | 1 | 5 555 |
| EI 03.1.50.12 | | 1200 | | 1 | 6 352 |
| EI 03.1.40.06W | 350* | 600 | 400 | 1 | 5 874 |
| EI 03.1.40.08W | | 800 | | 1 | 6 640 |
| EI 03.1.40.10W | | 1000 | | 1 | 7 361 |
| EI 03.1.40.12W | | 1200 | | 1 | 8 034 |
| EI 03.1.50.06W | 350* | 600 | 500 | 1 | 6 157 |
| EI 03.1.50.08W | | 800 | | 1 | 7 047 |
| EI 03.1.50.10W | | 1000 | | 1 | 7 827 |
| EI 03.1.50.12W | | 1200 | | 1 | 8 624 |

*350 - высота подтоварника с колесами /

*350 – dunnage rack height with wheels



МОБИЛЬНЫЕ ТЕЛЕЖКИ

MOBILE TROLLEY

МОБИЛЬНЫЕ ТЕЛЕЖКИ LOAD.ME.KITCHEN

Mobile trolley system LOAD.ME.KITCHEN

Мобильные тележки **LOAD.ME.KITCHEN** являются идеальным решением для организации транспортировки, хранения, оптимизации и увеличения свободного пространства производственных помещений, залов столовых, ресторанов, предприятий быстрого питания. Изготовление тележек на основе анодированного алюминия, направляющих из нержавеющей стали и пищевого пластика обеспечивает их длительную устойчивость к коррозии, вызванной водой или влажностью, и высокий уровень гигиены. Прочная и надежная конструкция гарантирует стабильность и долговечность, компактность и маневренность изделий.

Элегантный дизайн и широкий ассортимент стандартных размеров, идеальное соотношение цены и качества дают возможность их широкого применения.

Modular mobile trolley system LOAD.ME.KITCHEN are ideal solution for organizing transportation, storage, optimization and increasing the free space of industrial premises, canteen halls, restaurants, fast-food outlets.

The mobile shelving systems are made from anodized aluminum, stainless steel rails and food-grade plastic to ensure their long-term resistance to corrosion caused by water or moisture and a high level of hygiene.

Robust and reliable design guarantees stability and durability, compactness and maneuverability of trolley.

Elegant design and a wide assortment of standard sizes, an ideal price-performance ratio make them widely applicable.



МОБИЛЬНЫЕ ТЕЛЕЖКИ ДЛЯ ПОДНОСОВ

Mobile tray trolleys

Мобильные тележки для подносов предназначены для хранения и транспортировки подносов, в том числе и подносов с грязной посудой, на предприятиях общественного питания. Прочная конструкция, идеальная коррозионная стойкость, обеспеченная применяемыми материалами, гарантируют надежность и долговечность изделия.

Высококачественные колеса, оснащенные стопором, обеспечивают мобильность изделия, легкость передвижения и маневренность даже при полной загрузке.

Тележки оснащены облицовочными панелями из пищевого пластика. Они являются дополнительным защитным ограждением, улучшают дизайн и удобство в использовании. При чистке тележки панели при необходимости можно легко снять.

Тележки могут быть использованы и без панелей.

Mobile tray trolleys are designed for storage and transportation of trays, including trays with dirty dishes, in catering establishments. Robust construction, perfect corrosion resistance provided by the materials used, guarantee the reliability and durability of the product.

High quality caster wheels with a stoppers ensure product mobility, ease of movement and maneuverability even when fully loaded. The trolleys can be equipped with foodgrade plastic cladding panels. They are an additional safety guard, enhancing design and usability. When cleaning the trolley, the panels can be easily removed if necessary. The trolleys can also be used without panels.

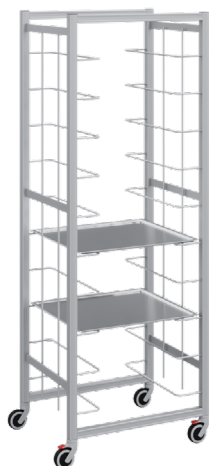


МОБИЛЬНЫЕ ТЕЛЕЖКИ ДЛЯ ПОДНОСОВ

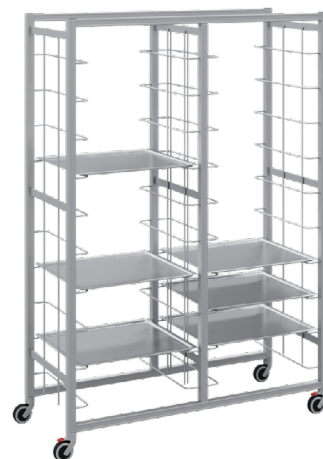
Mobile tray trolleys

| Модель Model | Исполнение Execution | Размеры (ВхШхГ), мм Dimensions (HxWxD), mm | Для подносов Trays | Макс. кол-во подносов Max number of trays | Шаг Spacing | Макс. нагрузка на тележку Maximum load | Цена с НДС, руб. |
|-----------------|-------------------------|---|-----------------------|--|----------------|--|---------------------|
| KG16.12.57.40 | Single | 1600x400x576 | GN 530x325 | 12 | 75 | 210 | 15 900 |
| KG16.24.57.77D | Double | 1600x770x576 | GN 530x325 | 24 | 75 | 210 | 21 900 |
| KG16.09.57.40 | Single | 1600x400x576 | GN 530x325 | 9 | 100 | 210 | 15 900 |
| KG16.18.57.77D | Double | 1600x770x576 | GN 530x325 | 18 | 100 | 210 | 21 900 |
| KG16.07.57.40 | Single | 1600x400x576 | GN 530x325 | 7 | 125 | 210 | 15 900 |
| KG16.14.57.77D | Double | 1600x770x576 | GN 530x325 | 14 | 125 | 210 | 21 900 |
| KE16.12.57.44 | Single | 1600x440x576 | EN 530x370 | 12 | 75 | 210 | 15 900 |
| KE16.20.57.85D | Double | 1600x850x576 | EN 530x370 | 24 | 75 | 210 | 21 900 |
| KE16.09.57.44 | Single | 1600x440x576 | EN 530x370 | 9 | 100 | 210 | 15 900 |
| KE16.18.57.85D | Double | 1600x850x576 | EN 530x370 | 18 | 100 | 210 | 21 900 |
| KE16.07.57.44 | Single | 1600x440x576 | EN 530x370 | 7 | 125 | 210 | 15 900 |
| KE16.14.57.85D | Double | 1600x850x576 | EN 530x370 | 14 | 125 | 210 | 21 900 |
| KU16.12.50.41 | Single | 1600x414x506 | UNI 460x344 | 12 | 75 | 210 | 15 900 |
| KU16.24.50.79D | Double | 1600x798x506 | UNI 460x344 | 24 | 75 | 210 | 21 900 |
| KU16.09.50.41 | Single | 1600x414x506 | UNI 460x344 | 9 | 100 | 210 | 15 900 |
| KU16.18.50.79D | Double | 1600x798x506 | UNI 460x344 | 18 | 100 | 210 | 21 900 |
| KU16.07.50.41 | Single | 1600x414x506 | UNI 460x344 | 7 | 125 | 210 | 15 900 |
| KU16.14.50.79D | Double | 1600x798x506 | UNI 460x344 | 14 | 125 | 210 | 21 900 |
| KG14.10.57.40 | Single | 1400x400x576 | GN 530x325 | 10 | 75 | 210 | 13 900 |
| KG14.20.57.77D | Double | 1400x770x576 | GN 530x325 | 20 | 75 | 210 | 19 900 |
| KE14.10.57.44 | Single | 1400x440x576 | EN 530x370 | 10 | 75 | 210 | 13 900 |
| KE14.20.57.85D | Double | 1400x850x576 | EN 530x370 | 20 | 75 | 210 | 19 900 |
| KU14.10.50.41 | Single | 1400x414x506 | UNI 460x344 | 10 | 75 | 210 | 13 900 |
| KU14.20.50.79D | Double | 1400x798x506 | UNI 460x344 | 20 | 75 | 210 | 19 900 |

Исполнение Single
Execution Single



Исполнение Double
Execution Double



ДОПОЛНИТЕЛЬНЫЕ ОПЦИИ

Additional options



Комплект панелей из пищевого пластика для двух боковых сторон

Set of panels made of food plastic for two sides

Цена с НДС, руб.

4 900



Комплект панелей из пищевого пластика для боковых сторон

Set of panels made of food plastic for the sides

Цена с НДС, руб.

| Single | Double |
|--------|--------|
| 7 350 | 9 800 |

СХЕМА УСЛОВНЫХ ОБОЗНАЧЕНИЙ

Designation of the rack section

KG16.24.57.77D



KE14.20.57.85D



KU16.18.50.79D



- 1 модель тележки, где
KG – под гастронормированные подносы,
KE – под еuronorm подносы,
KU – под универсальные подносы
trolley model, where
KG – for gastronorm trays,
KE – for euronorm trays,
KU – for universal trays

- 2 высота тележки
trolley height
3 количество подносов
number of trays
4 глубина тележки в см
trolley depth in cm
5 ширина тележки в см
trolley width in cm

- 6 исполнение, где
D – double
execution where
D – double

МОБИЛЬНЫЕ ТЕЛЕЖКИ ДЛЯ ЕВРОКОНТЕЙНЕРОВ

Euro container Trolleys

Мобильные тележки широко применяются для хранения и перемещения различных продуктов в евроконтейнерах размером 400х600 мм. Специально адаптированная к небольшим количествам продуктов производственная тележка идеально подходит для различных производственных постов на кухне. Благодаря компактной конструкции легко и безопасно перемещается даже в узких зонах.

Тележки гарантируют максимальное использование пространства, отличную функциональность и эргономику, ориентированную на рабочие процессы на кухне.

Изготовленная из анодированного алюминия рама тележки и L-образные направляющие из нержавеющей стали обеспечивают высокую коррозионную стойкость, долговечность и высокие гигиенические требования. Высококачественные колеса, оснащенные стопором, обеспечивают мобильность, легкость передвижения и маневренность тележки. Тележки имеют 5 и 10 уровней загрузки.

Максимальная нагрузочная способность на тележку – 240 кг.

Trolleys are widely used for storing and moving various products in Eurocontainers measuring 400x600 mm.

Specially adapted to small quantities of goods, the trolley is ideal for various kitchenwork zones. Thanks to its compact design, it can be moved in narrow areas easily and safely even.

The trolleys guarantee maximum use of space, excellent functionality and an ergonomics oriented towards the work processes in the kitchen.

Anodized aluminum trolley frame and stainless steel L-rails ensure high corrosion resistance, durability and high hygiene requirements.

High quality caster wheels, equipped with a stopper, ensure mobility, ease of movement and maneuverability of the trolley. The trolleys have 5 or 10 loading levels.

The maximum load capacity is 240 kg.



ТЕХНИЧЕСКИЕ ХАРАКТЕРИСТИКИ

Specifications

| Артикул Article | Габариты, мм Dimensions, mm | Шаг, мм Spacing, mm | Кол-во уровней Number of levels | Размер контейнера Container size | Цена с НДС, руб. |
|--------------------|--------------------------------|------------------------|------------------------------------|--|---------------------|
| EU16.05.61.47 | 1600x473x610 | 257 | 5 | Евроконтейнер E2 400x600x200 Eurocontainer E2 400x600x200 | 25 500 |
| EU16.10.61.47 | 1600x473x610 | 115 | 10 | Евроконтейнер E1 400x600x100 Eurocontainer E1 400x600x100 | 41 700 |

МОБИЛЬНЫЕ ТЕЛЕЖКИ ДЛЯ КОРЗИН ПОСУДОМОЕЧНЫХ МАШИН

Trolley for dishwasher baskets

Мобильные тележки для транспортировки корзин посудомоечных машин предназначены для пустых и загруженных корзин размерами 500*500 мм.

Прочная и жесткая рама тележки сделана из анодированного алюминиевого профиля с L-образными направляющими, выполненными из нержавеющей стали. Количество пар направляющих для корзин глубиной от 100 до 200 мм - 5, для корзин глубиной до 100 мм - 10.

Высококачественные колеса, оснащенные стопором, обеспечивают мобильность, легкость передвижения и маневренность тележки. Тележки защищены от повреждений дисковыми бамперами, изготовленными из ударопрочной пластмассы..

Бамперы крепятся над колесными опорами. При необходимости их можно легко заменить.

Mobile trolley for transporting dishwasher baskets are designed for empty and loaded baskets with dimensions of 500 * 500 mm.

Robust and rigid trolley frame is made of anodized aluminum profile, L-shaped rails made of stainless steel. The number of pairs of guides for baskets with a depth of 100 to 200 mm - 5, for baskets with a depth of 100 mm - 10.

High quality wheels equipped with a stopper ensure mobility, ease of movement and handleability.

The trolleys are protected from damage by disc bumpers made of impact-resistant plastic, which are mounted above the wheel supports. They can be easily replaced if necessary.



| Модель Model | Размеры (ВхШхГ), мм Dimensions (HxWxD), mm | Для подносов Trays | Макс. кол-во подносов Max number of trays | Шаг Spacing | Цена с НДС, руб. |
|-----------------|---|-----------------------|--|----------------|---------------------|
| KD 16.05 | 1600x588x542 | Кассета 500x500x200 | 5 | 127 | 12 500 |
| KD 16.10 | 1600x588x542 | Кассета 500x500x100 | 10 | 258 | 17 200 |

МОБИЛЬНЫЕ ТЕЛЕЖКИ ДЛЯ ГАСТРОЕМКОСТЕЙ

Mobile gastronorm rack trolley

Мобильные тележки для gastronorm емкостей адаптированы для перемещения и хранения различных продуктов в емкостях размерами соответствующими гастро- и евростандартам. Тележки гарантируют максимальное использование пространства, отличную функциональность и эргономику, ориентированную на рабочие процессы на кухне. Благодаря компактной конструкции легко и безопасно перемещается даже в узких зонах.

Изготовленная из анодированного алюминия рама тележки и L-образные направляющие из нержавеющей стали обеспечивают высокую коррозионную стойкость, долговечность и высокие гигиенические требования. Высококачественные колеса, оснащенные стопором, обеспечивают мобильность, легкость передвижения и маневренность тележки.

Максимальная нагрузочная способность на тележку 200 кг.

Mobile gastronorm rack trolley are adapted for moving and storing various products in Gastronorm and Euronorm trays standards.

The trolleys guarantee maximum space utilization, excellent functionality and ergonomics oriented towards the work processes in the kitchen. Thanks to their compact design, they can be moved easily and safely even in narrow areas.

The mobile rack trolley frame made of anodized aluminum and stainless steel L-shaped rails ensure high corrosion resistance, durability and high hygiene requirements. High quality caster wheels equipped with a stopper ensure mobility, ease of movement and maneuverability of the cart.

The maximum load capacity is 200 kg.



| Модель Model | Исполнение Execution | Размеры (ВхШхГ), мм Dimensions (HxWxD), mm | Для подносов Trays | Макс. кол-во подносов Max number of trays | Шаг Spacing | Макс. нагрузка на тележку Maximum load | Цена с НДС, руб. |
|-----------------|--------------------------|---|------------------------------------|--|----------------|--|---------------------|
| KG16.16.1/1 | Продольная Lengthwise | 1600*х400х576 | GN1/1 (530x325) | 16 | 75 | 200 | 24 200 |
| KG16.17.2/1* | Широкая Wide | 1600*х599х662 | GN2/1 (650x530) GN1/1 (530x325) | 17-34 | 75 | 200 | под заказ |
| KG18.19.1/1 | Продольная Lengthwise | 1800х400х576 | GN1/1 (530x325) | 19 | 75 | 200 | 26 900 |
| KG18.20.2/1* | Широкая Wide | 1800х599х662 | GN2/1 (650x530) GN1/1 (530x325) | 20-40 | 75 | 200 | под заказ |
| KE16.16.1/1 | Продольная Lengthwise | 1600х473х610 | EN1/1 (600x400) | 16 | 75 | 200 | 25 600 |
| KE18.19.1/1 | Продольная Lengthwise | 1800х473х610 | EN1/1 (600x400) | 19 | 75 | 200 | 28 500 |

*Исполнение под заказ / *Made-to-order

ДОПОЛНИТЕЛЬНЫЕ ОПЦИИ

Additional options



Комплект панелей из пищевого пластика для двух боковых сторон

Set of panels made of food plastic for two sides

Цена с НДС, руб.

4 900



Комплект панелей из пищевого пластика для боковых сторон

Set of panels made of food plastic for the sides

Цена с НДС, руб.

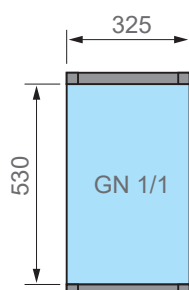
7 350

СХЕМЫ ИСПОЛНЕНИЯ

Execution schemes

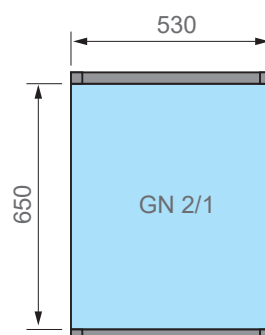
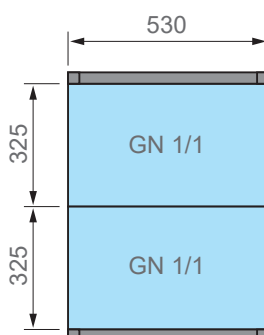
Продольная

Lengthwise



Широкая

Wide



POLAIR



Подробную информацию о поставщиках оборудования POLAIR в вашем регионе смотрите на сайте www.polair.com в разделе «Где купить»

Detailed information about POLAIR suppliers in your region you can get at www.polair.com in section «Where to buy» / Le informazioni per l'acquisto dei prodotti POLAIR nelle diverse aree si può trovare sul sito www.polair.com alla sezione «Dove comprare»

www.polair.com
www.polairgroup.ru
sales_russia@polair.com



@polair.polair



@polairgroup