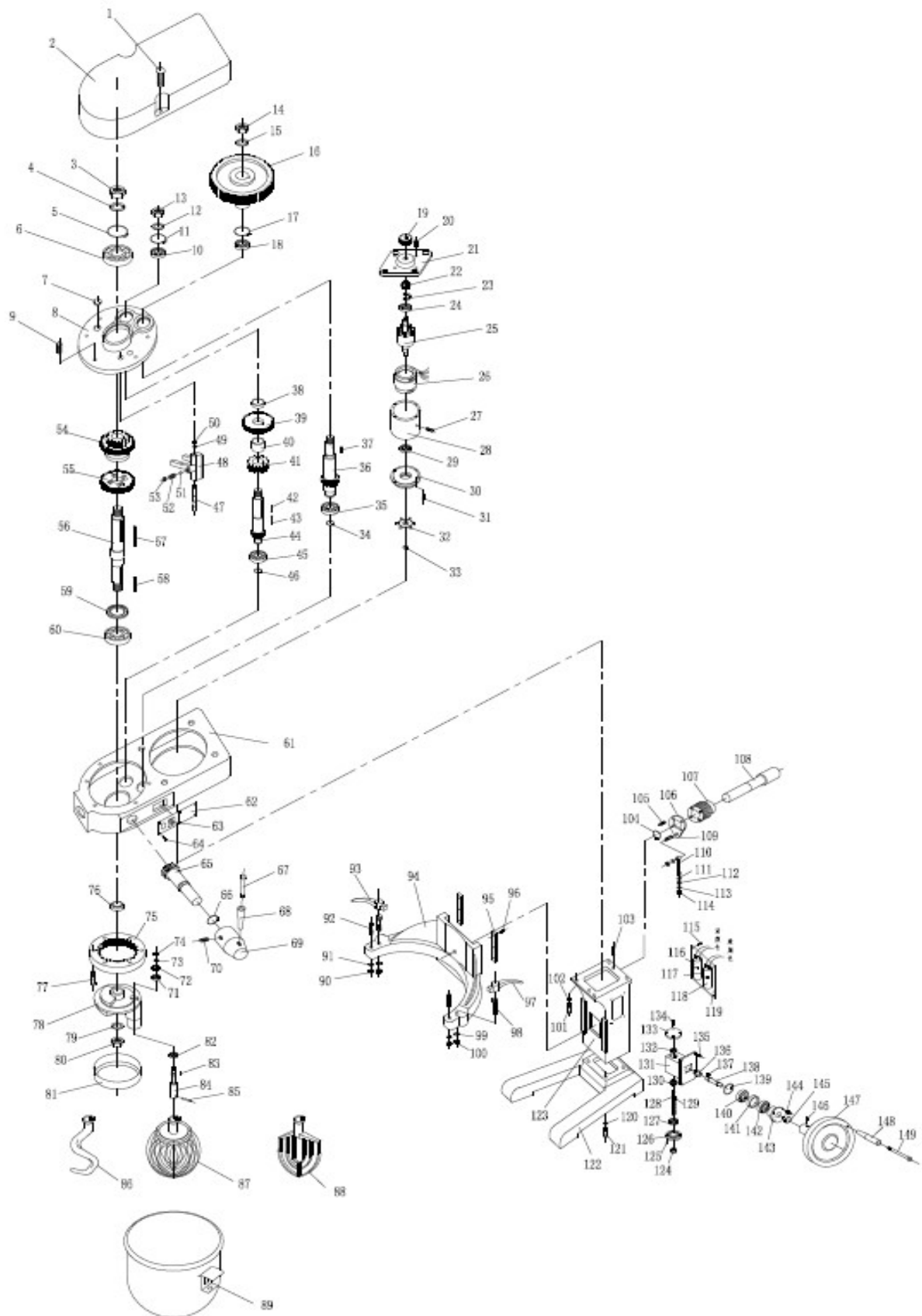


**МИКСЕР ПЛАНЕТАРНЫЙ HURAKAN HKN-IP60FM**




**МИКСЕР ПЛАНЕТАРНЫЙ HURAKAN HKN-IP60FM**

Поз	Наименование детали				
1	Screw M6X110	58	Dowel 8X55	115	Screw M4X8
2	Cover	59	Oil seal 38X58X12	116	Capacitor 200UF
3	Nut M22X1.5	60	Bearing 6207	117	Screw M6X15
4	Washer 22	61	Case	118	Capacitor 35UF
5	Circlip for hole D62	62	Label	119	Plate
6	Bearing 6206	63	Switch	120	Ring washer 12
7	Oil-lide cover	64	Screw M5X8	121	Screw M12X45
8	Box cover	65	Shift gear	122	Footing
9	Screw M6X25	66	Snap spring D20	123	Guide pillar
10	Bearing 6204	67	Shift level handle core	124	Screw nut
11	Circlip for hole D47	68	Shift level handle	125	Screw M6X20
12	Washer 16	69	Shift level seat	126	Cover
13	Nut M16X1.5	70	Screw M8X16	127	Tapered roller bearing 30205
14	Nut M16X1.5	71	Bearing 6205	128	Lead screw
15	Washer 16	72	Planetary gear Z=22	129	Dowel 8X20
16	Synchronous belt wheel Z=68	73	Washer 16	130	Bevel gear
17	Circlip for hole D47	74	Nut M16X1.5	131	Screw support seat
18	Bearing 6204	75	Ring gear Z=70	132	Tapered roller bearing 30204
19	Synchronous belt wheel Z=13	76	Spacer Sleeve	133	Cover
20	Screw M5X20	77	Screw M6X255	134	Screw M6X20
21	Front Cover	78	Planetary gear holder	135	Screw M8X20
22	Centrifugal switch	79	Washer 22	136	Bevel gear
23	Bottom plate	80	Nut M22X1.5	137	Dowel 8X25
24	Bearing 6205	81	Ring	138	Hand wheel shaft
25	Rotor	82	BeaRING 6006	139	Circlip for hole D47
26	Stator	83	Dowel 8X18	140	Bearing 6204
27	Fastening screw M6X15	84	Stir shaft	141	Handwhell shaft sleeve
28	Motor shell	85	Straidht pin 10X30	142	Bearing 6204
29	Bearing 6205	86	Dough mixer	143	Handwhell support
30	Bake Cover	87	Stirred ball	144	Screw M8X15
31	Screw M5X20	88	Agitator	145	Snap spring D20
32	Motor fan	89	Charging barrel	146	Screw M8X15
33	Snap spring D15	90	Nut M8	147	Handwheel
34	Snap spring D20	91	Ring washer 8	148	Handwheel handle
35	Bearing 6204	92	Anchor Pin	149	Screw
36	Input shaft Z=13	93	Lock handle		
37	Dowel 6X30	94	Barrell holder		
38	Spacer Sleeve	95	Flat clamp		
39	Gear Z=34	96	Screw M8X16		
40	Spacer Sleeve	97	Lock handle		
41	Gear Z=24	98	Locking pin		
42	Dowel 6X20	99	Washer 12		
43	Dowel 6X20	100	Nut M12		
44	Second motion shaft Z=15	101	Screw M12X35		
45	Bearing 6204	102	Ring washer 12		
46	Snap spring D20	103	Straight Pin 8X16		
47	Fork Shaft	104	Snap spring D14		
48	Shift fork	105	Screw M8X20		
49	Ring washer 10	106	Worm wheel splint		
50	Nut M10	107	Lifting gear		
51	Steel ball D8	108	Lifting worm shaft		
52	Posicioning spring	109	Screw hook		
53	Screw M10X20	110	Lifeing hook		
54	Double gear Z=27,37	111	Washer 12		
55	Gear Z=46	112	Spring		
56	Output shaft (3)	113	Washer 12		
57	Dowel 10X115	114	Nut M12		