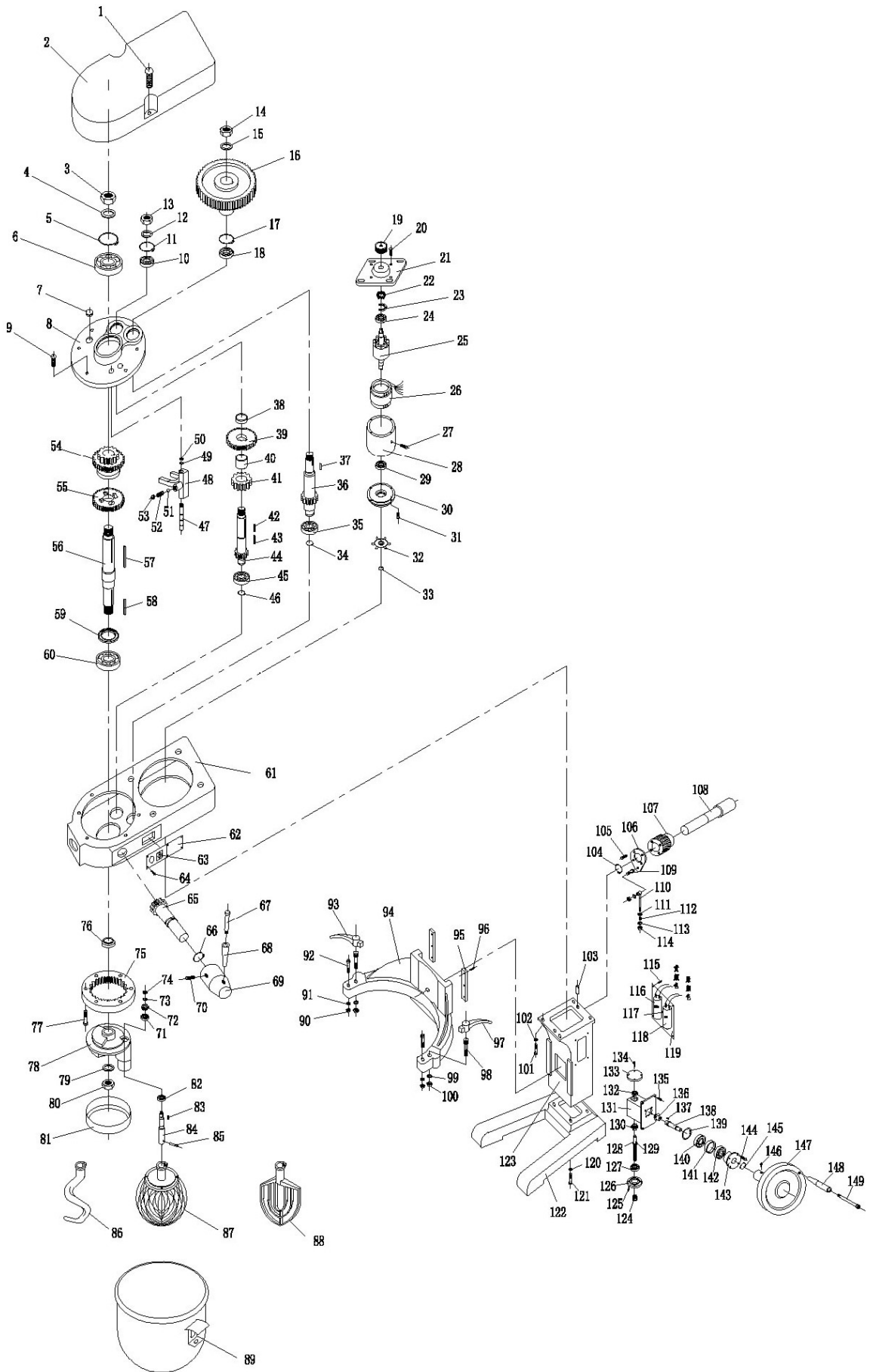


**МИКСЕР ПЛАНЕТАРНЫЙ HURAKAN HKN-IP60FZ**




## МИКСЕР ПЛАНЕТАРНЫЙ HURAKAN HKN-IP60FZ

Поз	Наименование детали	Кол						
1	Screw M6X110	2	59	Oil Seal 38X58X12	1	117	Screw M6X15	1
2	Cover	1	60	Bearing 6207	1	118	Capacitor 35UF	1
3	Nut M22X1.5	1	61	Case	1	119	Plate	1
4	Washer 22	1	62	Label	1	120	Ring Washer 12	4
5	Circlip for hole D62	1	63	Switth	1	121	Screw M12X45	4
6	Bearing 6206	1	64	Screw M5X8	5	122	Footing	1
7	Oil-Hde Cover	1	65	Shift Gear	1	123	Guide pillar	1
8	Box cover	1	66	Snap Spring D20	1	124	Screw nut	1
9	Screw M6X25	4	67	Shift lever handle core	1	125	Screw M6X20	4
10	Bearing 6204	1	68	Shift lever handle	1	126	Cover	1
11	Circlip for hole D47	1	69	Shift lever seat	1	127	Tapered roller bearing 30205	1
12	Washer 16	1	70	Screw M8X16	1	128	Lead screw	1
13	Nut M16x1.5	1	71	Bearing 6205	1	129	Dowel 3X20	1
14	Nut M16x1.5	1	72	Planetary Gear Z=22	1	130	Bevel gear	1
15	Washer 16	1	73	Washer 16	1	131	Screw support seat	1
16	Synchronows belt weel	1	74	Nut M16X1.5	1	132	Tapered roller bearing 30304	1
17	Circlip for hole D47	1	75	Ring gear Z=69	1	133	Cover	1
18	Bearing 6204	1	76	Spacer Sleeve	1	134	Screw M61120	4
19	Synchronows belt weel	1	77	Screw M6X25	6	135	Screw 1181120	4
20	Screw M5X20	4	78	Planetary Gear Hholder	1	136	Bevel gear	1
21	Front cover	1	79	Washer 22	1	137	Dowel 8X25	1
22	Centrifugal Switch	1	80	Nut M22X1.5	1	138	Handwheel shaft	1
23	Bottom Plate	1	81	Ring	1	139	Circlip for hole D47	1
24	Bearing 6205	1	82	Bearing 6006	1	140	Bearing 6204	1
25	Rotor	1	83	Dowel 8X8	1	141	Hand wheel shaft sleeve	1
26	Stator	1	84	Stir Shaft	1	142	Bearing 6204	1
27	Fastening screw M6X15	1	85	Straight Pin 10X30	1	143	Handwheel support	1
28	Motor shell	1	86	Dough mixer	1	144	Screw M6X15	4
29	Bearing 5205	1	87	Stirred ball	1	145	Snap Spring D20	1
30	Bake Cover	1	88	Agitator	1	146	Screw M8X15	1
31	Screw M5X20	4	89	Charging barrel	1	147	Hand wheel	1
32	Motor Fan	1	90	Nut M8	2	148	Hand wheel handle	1
33	Snap Spring D15	1	91	Ring Washer 11	2	149	Screw	1
34	Snap Spring D20	1	92	Anchlr Pin	2			
35	Bearing 6204	1	93	Lock Handle	1			
36	Inputshaft Z=13	1	94	Barrel Holder	1			
37	Dowel 6X30	1	95	Flat Clamp	2			
38	Spacer Sleeve	1	96	Screw M8X16	6			
39	Gear Z=34	1	97	Lock Handle	1			
40	Spacer Sleeve	1	98	Locking Pin	2			
41	Gear Z=24	1	99	Washer 12	2			
42	Dowel 6M20	1	100	Nut M12	2			
43	Dowel 6M20	1	101	Screw M12X35	4			
44	Second Motion shaft Z=15	1	102	Ring Washer 12	4			
45	Bearing 6204	1	103	Straight Pin 8X16	2			
46	Snap Spring M20	1	104	Snap Spring D14	1			
47	Fork Shaft	1	105	Screw M8X20	4			
48	Shift Fork	1	106	Worm wheel splint	1			
49	Ring Washer 10	1	107	Lifting Gear	1			
50	Nut M10	1	108	Lifting worm shaft	1			
51	Steel Ball D18	1	109	Screw hook	1			
52	Positioning Spring	1	110	Lifeing hook	1			
53	Screw M10X20	1	111	Washer 12	1			
54	Double Gear Z=27, 37	1	112	Spring	1			
55	Gear Z=46	1	113	Washer 12	1			
56	Output Shaft	1	114	Nut M12	3			
57	Dowel 10X115	1	115	Screw M4118	4			
58	Dowel 8X55	1	116	Capacitor 200UF	1			