

SOUSVIDETOOLS

iVide THERMAL CIRCULATOR WIFI CONNECTIVITY GUIDE & FAQ'S



FAQ'S

The buttons on my iVide don't appear to be working?

Have you removed the protective blue film that is on the unit for transportation purposes? Are you using the full pad of your finger rather than the tip? The buttons are heat sensitive rather than pressure sensitive which allows the unit to be fully IPX7 rated and therefore waterproof. The unit has been manufactured this way so it completely safe to use in/near water.

I have an error message of EE1 showing on my iVide?

Please ensure your iVide is in water. This device has a safety feature that means it cannot be operated when not placed in water preventing damage to the unit.

What does C stand for on the display when I start the iVide up?

This means the unit is set to Centigrade as opposed to Fahrenheit. If needs be this can be changed by pressing and holding the power button. For more details see user manual.

I can't connect my iVide to my Wifi network?

Please see Wifi connectivity guide below

CONNECTING TO YOUR iVide THERMAL CIRCULATOR

GETTING STARTED

Downloading The iVide Thermal Circulator APP

If the iVide Thermal Circulator APP has not yet been downloaded, it can be downloaded from the Apple Store (IOS) or Google Play (Android). It is compatible with IOS version 9.3.5 and later. It is compatible with Android version 4.3 and later.

Note: Please check with your mobile phone or device's manufacturer if have question about downloading APP.



EE1 ERROR CODE:

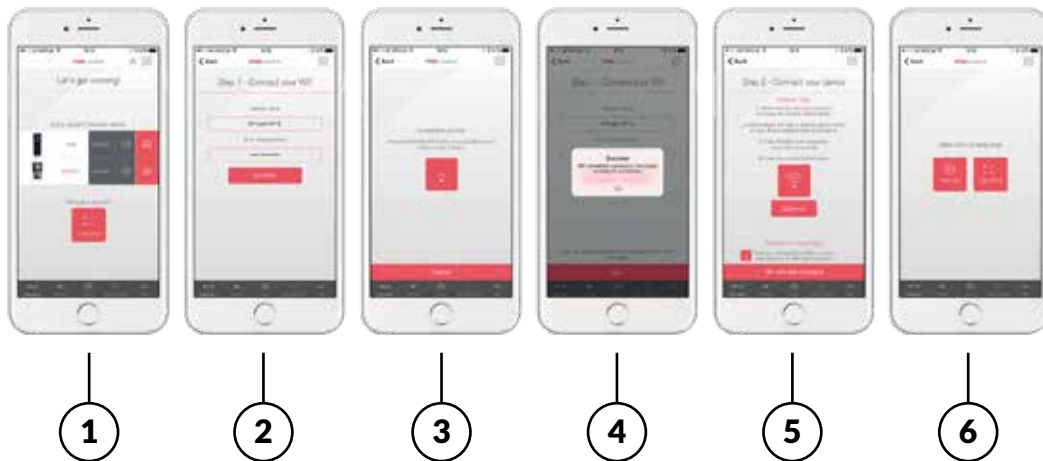
Prior to operating or connecting your device to the Wi-Fi, please ensure the bottom section of the device is placed in the water first. If the device is not in the water it will come up with error code “EE1” on the display. This is a safety feature that prevents the item from operating out of water and prevents damage to the unit, it does not mean the unit has a fault.

Six Steps To Configure The iVide Thermal Circulator APP

Installing the iVide Thermal Circulator APP is quick, in contrast to some other apps. The iVide APPS allows instant use, providing the necessary information exactly when you need it. We have developed a completely new approach to this kind of applications because every moment in the kitchen should be unforgettable. The APP is compatible with the iVide Thermal Circulator with Wi-Fi. The App makes cooking with the iVide Thermal Circulator incredibly easy. Simply select the food, adjust the settings, and press Start.

CONTROL WITH THE APP

Six Easy Steps



1. Select the appliance you want to use, and press “CONNECT”.
2. The app will detect a connected Wi-Fi network. Enter the password and press ‘Confirm’.
3. The APP will search for your cooker. Press the Wi-Fi button on the cooker until you hear the three signal beeps. Wait until the appliance finishes automatic configuration.
4. Once the process is complete, you will see a message confirming the appliance is ready to be connected.
5. Make sure the cookers Wi-Fi LED has stopped flashing and then press the ‘Connect’ button. If you need help, read the hints and tips on the display.
6. Congratulations! Your cooker has just been configured! Enjoy your cooking!

Note:

The Apple and iPhone logos are trademarks of Apple Inc., registered in the USA and other countries. Apple Store is a service mark of Apple Inc.

Android; Google Play and Google Play logo are trademarks of Google Inc.

2.4GHZ WIRELESS ROUTER



Wireless Router Setup

As with all Wi Fi based Sous Vide Cookers on the market this item will only connect to wireless routers set at **2.4Ghz**.



If your router is set to 5Ghz you will need to amend your router settings to 2.4Ghz to allow for successful connection. Please use our handy 'How to turn off 5GHz wireless' Guide to change your router.

HOW TO TURN OFF 5GHZ WIRELESS

Using BT Home Hub 5 as an example, but it will be a similar process and wording for all routers – you will need to find the admin access for the specific router.

STEP 1

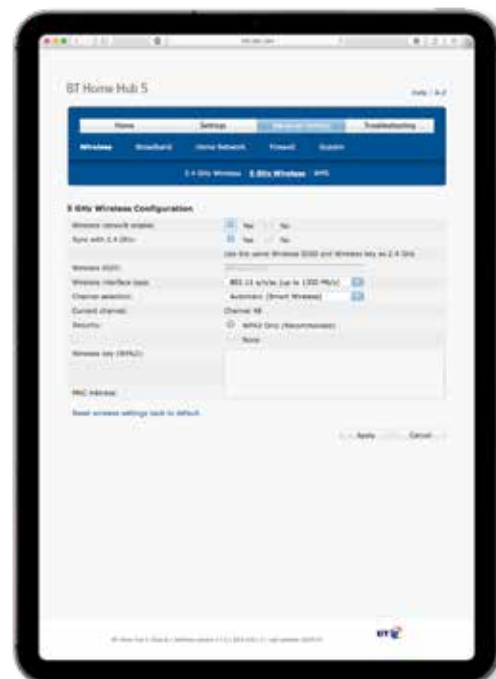
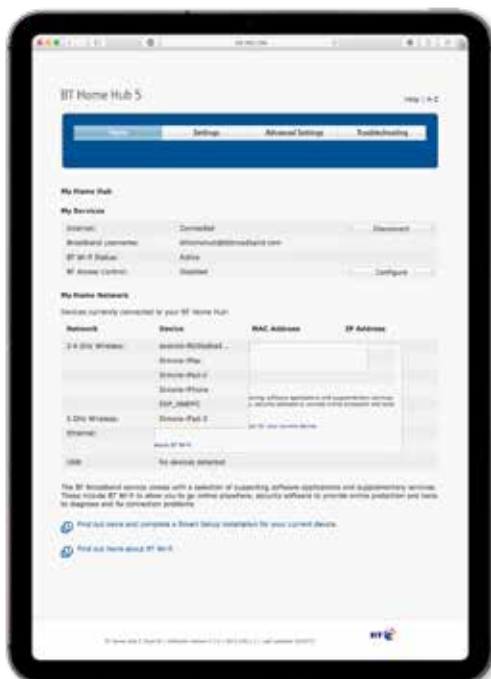
With a BT router, simply type 192.168.1.254 into a browser of choice of a device you are connected to the router with. You will be presented with your router settings screen.

STEP 2

Click advanced settings

-> Wireless -> 5GHz wireless

You may be asked to login with an admin password, this will be with the wireless password on your router, or will be in the manual if a different router



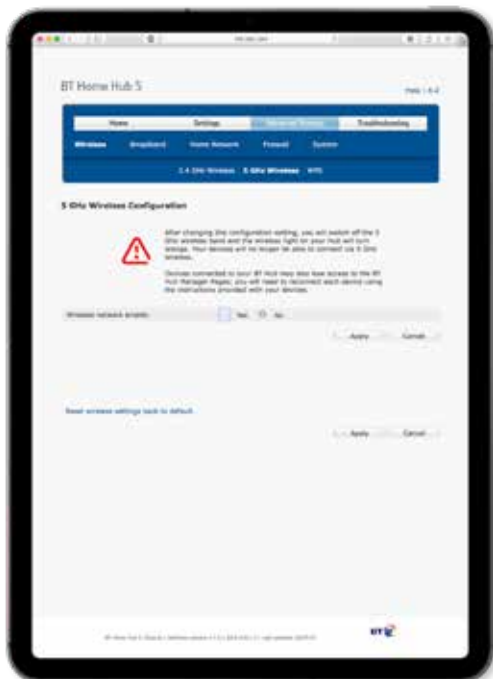
HOW TO TURN OFF 5GHZ WIRELESS

STEP 3

Disable this network by clicking the enable “No” – you may see a warning such as this – click apply and wait for the router to configure.

Once done, you may need to turn the wifi connection off and back on again on your device (not router).

This will then mean that the 5GHz channel is no longer active.





sousvide tools.com

HEADQUARTERS

Central Barn, Cloughton Business Park,
Hornby Road, Cloughton, Lancaster, LA2 9JX

0800 678 5001

01524 770 060

enquiries@sousvidetools.com

www.sousvidetools.com